



Felsted, Caldecotte, Milton Keynes, MK7
Milton Keynes

Offers Over
£240,000

Bedrooms: | Bathrooms: | Receptions:
2 | 2 | 1

Tenure: Leasehold

Property Type: Duplex Flat

- Duplex top floor apartment
- Approximately 871 sq ft (81 sq m) of accommodation
- Two double bedrooms with an en suite to Bedroom Two
- Separate family bathroom and additional WC
- One allocated parking space with ample nearby visitor parking
- Less than a one minute walk to Caldecotte Lake
- Approximately 7 minute walk to Bow Brickhill railway station
- Approximately 6 minute walk to Caldecotte Business Park and 11 minute walk to Red Bull Racing
- Approximately 10 minute drive to both Kingston Centre and Milton Keynes University Hospital, with MK1 Shopping & Leisure Park just 8 minutes away
- EG1332



EG1332

Perfectly positioned in one of Milton Keynes' most sought after lakeside locations, this spacious two bedroom duplex apartment offers approximately 871 sq ft (81 sq m) of beautifully arranged accommodation set over two floors. With Caldecotte Lake less than a one minute walk away, this home combines peaceful surroundings with exceptional convenience for commuters and professionals alike.

The first floor welcomes you with a bright entrance hall leading to a generous living room, ideal for relaxing or entertaining, alongside a separate fitted kitchen and a convenient WC.

The lower floor provides the sleeping accommodation, comprising a superb main bedroom, a spacious second double bedroom complete with its own en suite shower room, and a modern family bathroom, making the layout ideal for professionals, guests or those looking to share.

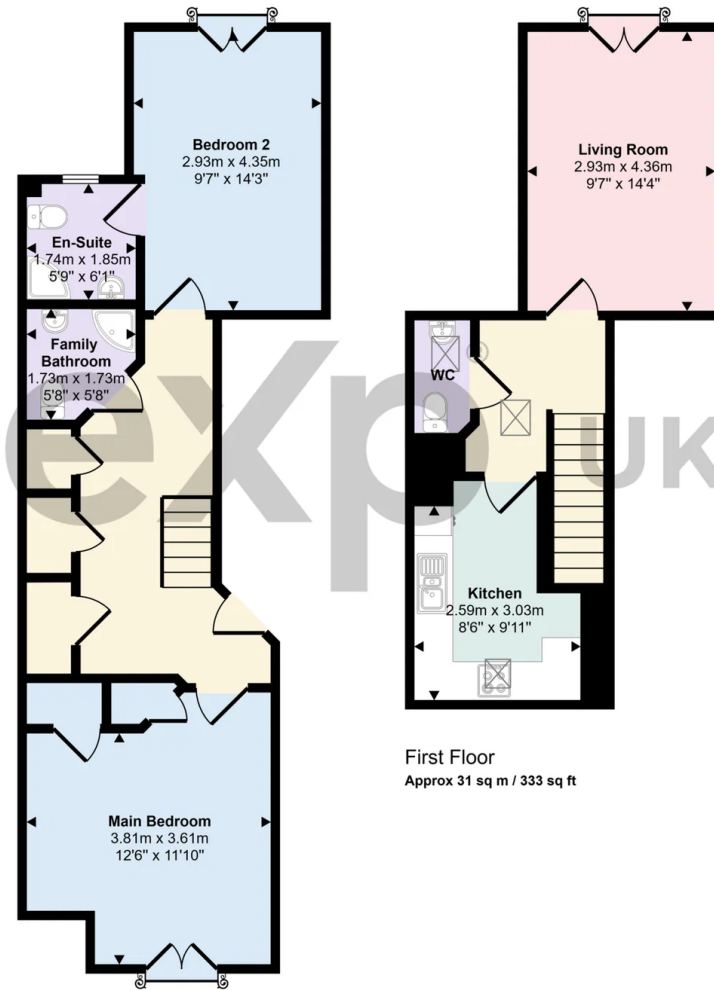
Outside, the property benefits from one allocated parking space, while the nearby Caldecotte Lake car park, approximately a one minute walk away, provides an abundance of visitor parking for family and friends.

The location is one of the property's standout features. Caldecotte Lake is practically on your doorstep, offering scenic walking routes, cycling paths and waterside views. Bow Brickhill railway station is approximately a 7 minute walk, providing rail links towards London. Caldecotte Business Park is just a 6 minute walk, while Red Bull Racing is approximately an 11 minute walk, making this an excellent choice for professionals working locally. Milton Keynes University Hospital can be reached in around a 10 minute drive, with everyday shopping catered for by Kingston Centre approximately 10 minutes away and MK1 Shopping & Leisure Park around an 8 minute drive.

Offering generous accommodation, a highly desirable duplex layout and an outstanding location moments from the lake, this home presents an excellent opportunity for first time buyers, professionals and investors alike.



Approx Gross Internal Area
81 sq m / 871 sq ft



Ground Floor
Approx 50 sq m / 538 sq ft

First Floor
Approx 31 sq m / 333 sq ft

This floorplan is only for illustrative purposes and is not to scale. Measurements of rooms, doors, windows, and any items are approximate and no responsibility is taken for any error, omission or mis-statement. Icons of items such as bathroom suites are representations only and may not look like the real items. Made with Made Snappy 360.



Score	Energy rating	Current	Potential
92+	A		
81-91	B		
69-80	C	76 C	76 C
55-68	D		
39-54	E		
21-38	F		
1-20	G		

Energy efficiency chart

Ethan Gaulter
Local Estate Agent
01908 464 950
Ethan.Gaulter@exp.uk.com
<https://ethangaulter.exp.uk.com>

ETHAN GAULTER

