

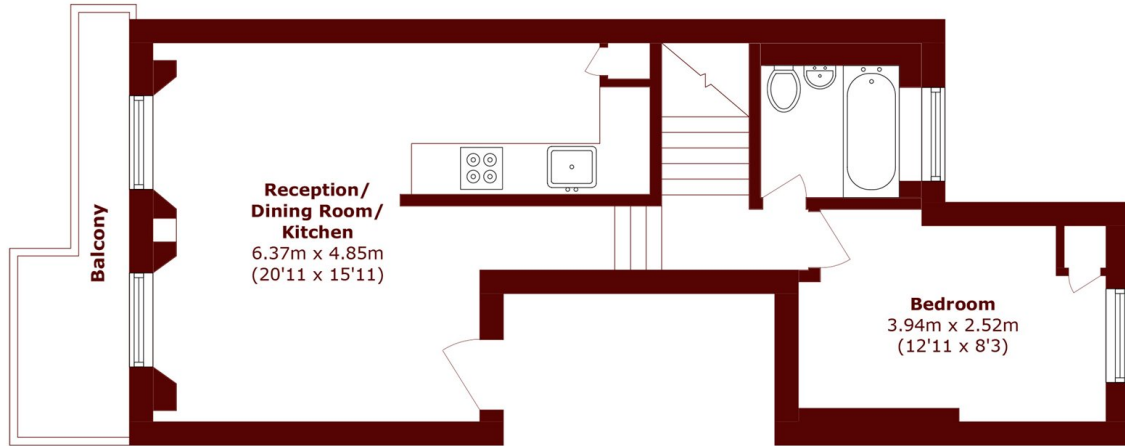


Monmouth Road, W2

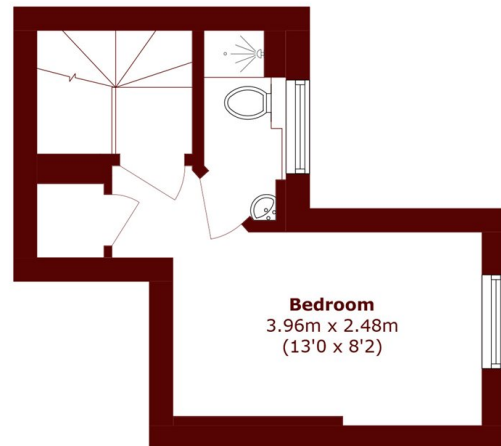
£1,200,000



- Fantastic Ceiling Height
- Split Level Apartment
- Two Bathrooms (En-Suite)
- No Onward Chain
- Just off Westbourne Grove
- Private Balcony



First Floor



Second Floor

Total area (approx.): 64.4 sq. m (693.2 sq. ft)
Balcony area (approx.): 5.3 sq. m (57.0 sq. ft)

Marsh & Parsons Notting Hill

2-6 Kensington Park Road,
London, W11 3BU
020 7313 2890