



18 Conningsby Drive, Pershore

Guide Price **£650,000**



18 Conningsby Drive

Pershore

Council Tax band: F

Tenure: Freehold

EPC Energy Efficiency Rating: C

EPC Environmental Impact Rating: C

- DETACHED FAMILY HOME
- BUILT BY DAVID WILSON HOMES
- QUIET CUL-DE-SAC LOCATION ON A SOUGHT-AFTER DEVELOPMENT
- FOUR BEDROOMS ALL WITH BUILT-IN WARDROBES
- PRINCIPAL BEDROOM WITH EN-SUITE SHOWER ROOM
- THREE RECEPTION ROOMS PLUS CONSERVATORY
- KITCHEN/BREAKFAST ROOM WITH SEPARATE UTILITY
- GROUND FLOOR SHOWER ROOM
- DETACHED DOUBLE GARAGE AND AMPLE OFF-ROAD PARKING
- PRIVATE WESTERLY FACING REAR GARDEN BACKING ONTO WOODLAND

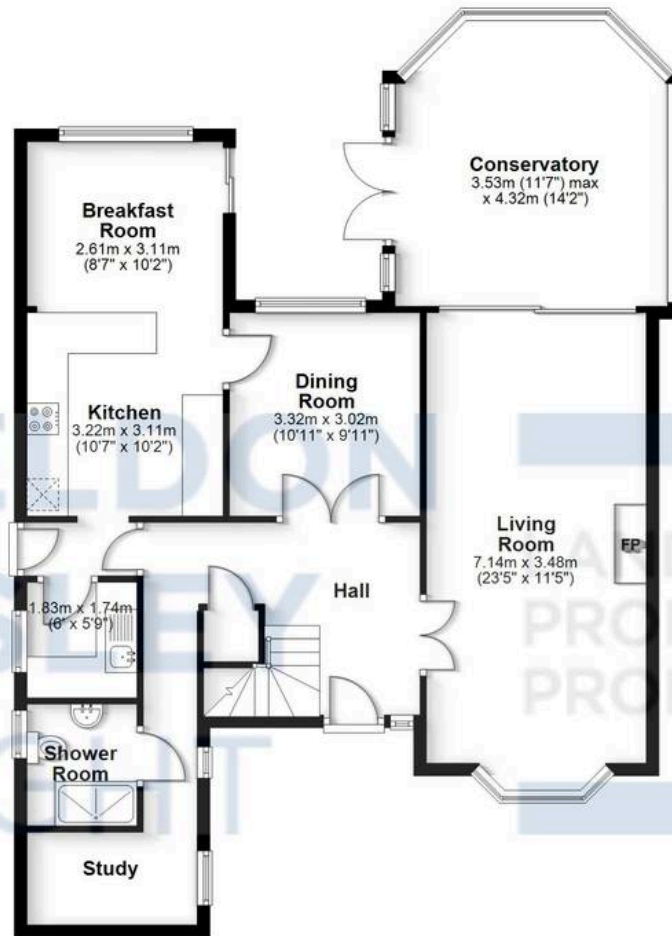






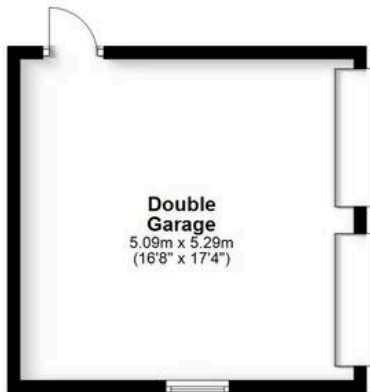
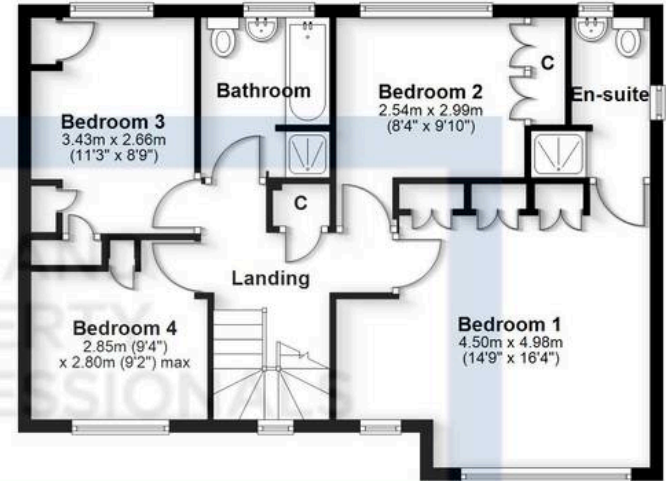
Ground Floor

Approx. 127.0 sq. metres (1367.3 sq. feet)



First Floor

Approx. 65.6 sq. metres (706.3 sq. feet)



Total area: approx. 192.6 sq. metres (2073.6 sq. feet)

All efforts have been made to ensure the measurements are accurate on this floor plan, however these are for guidance purposes only.
Plan produced using PlanUp.



Sheldon Bosley Knight Evesham & Pershore

Sheldon Bosley Knight, 1 Bridge Street, Evesham - WR11 4SQ

01386444900 · eveshamsales@sheldonbosleyknight.co.uk · www.sheldonbosleyknight.co.uk/

DISCLAIMER

All fixtures and fittings mentioned in these particulars are included in the sale, all others in the property are specifically excluded.

Photographs are reproduced for general information and it must not be inferred that any item is included for sale with the property.

These particulars are thought to be materially correct. Their accuracy is not guaranteed and they do not form part of any contract.