



East Sheen

East Sheen, SW15

£2,750 per month
(£634.62 per week)

A brilliant three-bedroom end-of-terrace house with a private garden, located near Barnes Station and Barnes Common.

The ground floor features a spacious open plan kitchen and reception room with plenty of natural light that opens out to the delightful garden, as well as a convenient bathroom.

Upstairs, there are three double bedrooms and a family bathroom.

Arabella Drive is just 0.6 miles from Barnes Station, offering regular trains to Waterloo and direct access to Hammersmith via the 33 bus. The property is also close to Richmond Park and Barnes Common, known as "Barnes Recreation Ground."



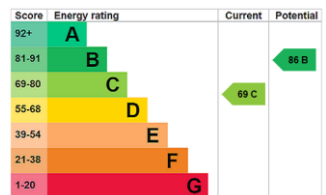
East Sheen

East Sheen, SW15

- Three Double Bedrooms
- Open Plan Kitchen/Living
- Garden
- Recently Refurbished



Minimum Term: 12 months
Deposit Required: £3,173.08
Local Authority: London Borough of Richmond upon Thames
Council Tax Band: D
EPC Rating: C
Unfurnished

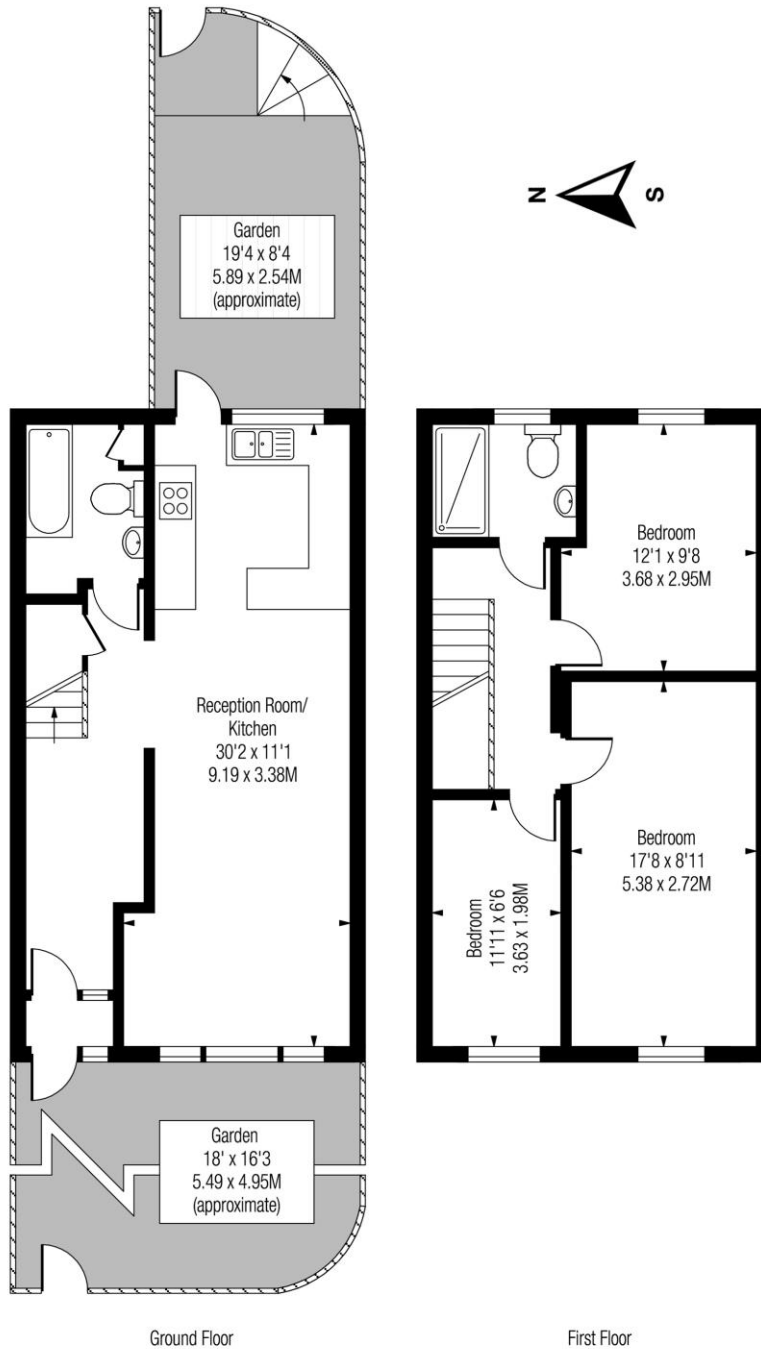


Chestertons East Sheen Lettings

254a Upper Richmond Road West
 East Sheen
 London
 SW14 8AG
 sheenlettingsusers@chestertons.co.uk
 02081040580
 chestertons.co.uk

Additional tenant charges apply (fees apply to non-AST tenancies only)
 Tenancy Agreement Fee: £300
 References per Tenant/Guarantor: £60
 Inventory check (approx. £100 – £250 inc. VAT)
chestertons.co.uk/property-to-rent/applicable-fees

Arabella Drive, SW15



Approx Gross Internal Area

Includes Limited Use Area - 13 Sq Ft
 Drawn in accordance with IPMS 2: Residential
 Illustration For Identification Purposes Only - Not to Scale
www.homespacestudio.co.uk - Ref. No. 52493

946 Sq Ft - 87.88 Sq M

