



Connells

Ferrars Close
Luton



Property Description

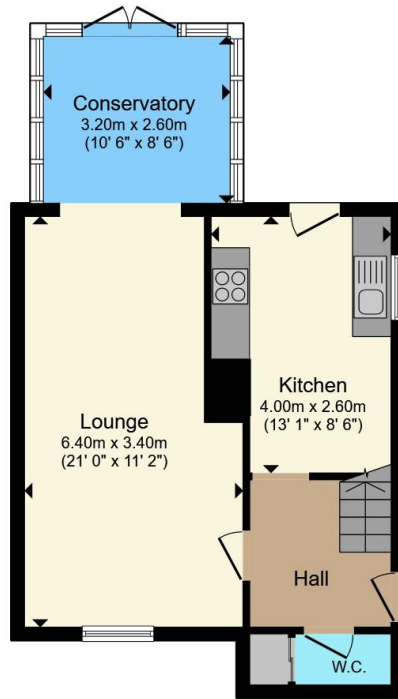
This Three Bedroom Semi-Detached Chain Free Property Situated On The L&D Borders. The Property Is Situated In Close Proximity to the Motorway Junction 11 and The Hospital With Regular Public Transport to Luton. This Family Home Benefits From Entrance Hall, Lounge/ Dining Room, Kitchen To The First Floor There Are Three Good Sized Bedroom and Family Bathroom. Off Road Parking, Garage and a Rear Garden.

This Three Bedroom Semi-Detached Chain Free Property Situated On The L&D Borders. The Property Is Situated In Close Proximity to the Motorway Junction 11 and The Hospital With Regular Public Transport to Luton. This Family Home Benefits From Entrance Hall, Lounge/ Dining Room, Kitchen To The First Floor There Are Three Good Sized Bedroom and Family Bathroom. Off Road Parking, Garage and a Rear Garden.

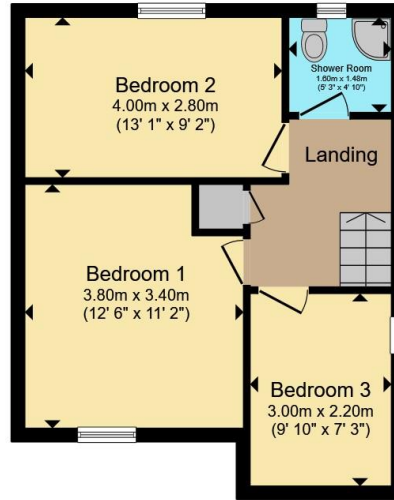
This Three Bedroom Semi-Detached Chain Free Property Situated On The L&D Borders. The Property Is Situated In Close Proximity to the Motorway Junction 11 and The Hospital With Regular Public Transport to Luton. This Family Home Benefits From Entrance Hall, Lounge/ Dining Room, Kitchen To The First Floor There Are Three Good Sized Bedroom and Family Bathroom. Off Road Parking, Garage and a Rear Garden.

This Three Bedroom Semi-Detached Chain Free Property Situated On The L&D Borders. The Property Is Situated In Close Proximity to the Motorway Junction 11 and The Hospital With Regular Public Transport to Luton. This Family Home Benefits From Entrance Hall, Lounge/ Dining Room, Kitchen To The First Floor There Are Three Good Sized Bedroom and Family Bathroom. Off Road Parking, Garage and a Rear Garden.





Ground Floor



First Floor

Total floor area 85.0 m² (915 sq.ft.) approx

This floor plan is for illustrative purposes only. It is not drawn to scale. Any measurements, floor areas (including any total floor area), openings and orientation are approximate. No details are guaranteed, they cannot be relied upon for any purpose and they do not form part of any agreement. No liability is taken for any error, omission or misstatement. A party must rely upon its own inspection(s). Powered by www.propertybox.io



To view this property please contact Connells on

T 01582 450 999
E luton@connells.co.uk

83-83A George Street
LUTON LU1 2AT

EPC Rating: C Council Tax
Band: B

view this property online connells.co.uk/Property/LUT318117

Tenure: Freehold



1. MONEY LAUNDERING REGULATIONS Intending purchasers will be asked to produce identification documentation at a later stage and we would ask for your co-operation in order that there will be no delay in agreeing the sale. 2. These particulars do not constitute part or all of an offer or contract. 3. The measurements indicated are supplied for guidance only and as such must be considered incorrect. Potential buyers are advised to recheck measurements before committing to any expense. 4. We have not tested any apparatus, equipment, fixtures, fittings or services and it is in the buyers interest to check the working condition of any appliances.

Connells Residential is registered in England and Wales under company number 1489613, Registered Office is Cumbria House, 16-20 Hockliffe Street, Leighton Buzzard, Bedfordshire, LU7 1GN. VAT Registration Number is 500 2481 05.

See all our properties at www.connells.co.uk | www.rightmove.co.uk | www.zoopla.co.uk

Property Ref: LUT318117 - 0003