

WE VALUE



YOUR HOME



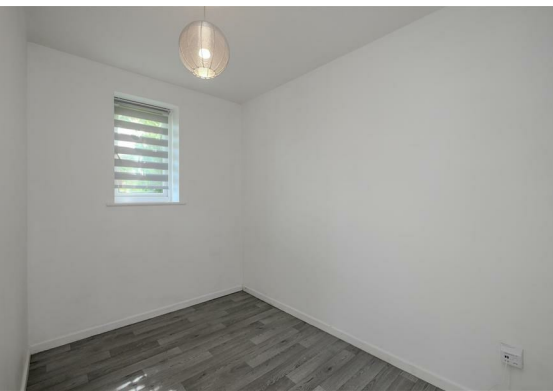
Kennet Close, Berinsfield
£900 Per Month



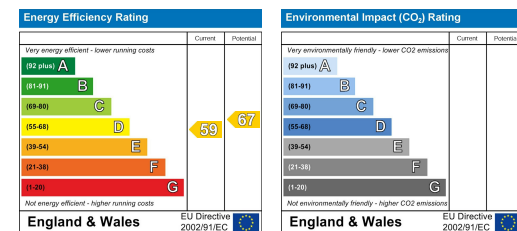
*Available from
Immediately for Long-
Term Let, Unfurnished*

This one-bedroom, ground floor apartment features a private, south-east facing rear garden, good size lounge with patio doors, a fitted shower room, white goods included in the kitchen and communal parking.

Located in close proximity to good transport links and village amenities including shops, library and sports centre with gym and swimming pool.



- AVAILABLE IMMEDIATELY FOR LONG-TERM LET, UNFURNISHED
- GROUND FLOOR APARTMENT
- COMMUNAL PARKING
- SOUTH-EAST FACING GARDEN
- SEPARATE LOUNGE & KITCHEN
- SHOWER ROOM



Energy Efficiency Graph

Floor Plan



Area Map



Viewing

Please contact our In House Sales & Lettings Office on 01491 839999 opt.1 if you wish to arrange a viewing appointment for this property or require further information.

These particulars, whilst believed to be accurate are set out as a general outline only for guidance and do not constitute any part of an offer or contract. Intending purchasers should not rely on them as statements of representation of fact, but must satisfy themselves by inspection or otherwise as to their accuracy. No person in this firm's employment has the authority to make or give any representation or warranty in respect of the property.

28 St Martins Street, Wallingford, Oxfordshire, OX10 0AL
Tel: 01491 839999 opt.1 Email: sales@inhouseestateagents.co.uk www.inhouseestateagents.co.uk