

for sale

offers in excess of **£550,000**



Juno Way Swindon SN5 8ZD

Offered with a **COMPLETE CHAIN** is this well-presented four-bedroom detached family home is ideally located in the highly sought-after Rushy Platt area of Swindon, offering generous living space, excellent amenities nearby, and convenient access to local schools & transport links. Viewing Recommended!



Juno Way Swindon SN5 8ZD

Kitchen / Conservatory

Kitchen: Double Glazed Window to Rear Garden, An Array of White Wall and Base Units with Work Surface Over, Tiled Splash Back All Around, Inset Sink with Draining Board and Mixer Tap, Built In Double Oven, Gas Hob, Space and Plumbing for Dishwasher, Built In Fridge / Freezer, Door to Utility Room, Radiator, Tiled Floor

Conservatory: Double Glazed Windows and French Doors to Rear Garden, Tiled Floor, 2 x Radiator

Ground Floor Accommodation

Entrance Hall

Access to Sitting Room through to Dining Room, Kitchen through to Conservatory and Utility Room, Study & Cloakroom, Stairs up to First Floor, 2 x Storage Cupboards

Sitting Room

Double Glazed Bay Window to Front, Feature Fire Place, Radiator, Double Doors to Dining Room

Dining Room

Double Glazed French Doors to Rear Garden, Radiator, Door to Kitchen

Utility Room

Double Glazed Door to Rear Garden, Base Units with Work Surface Over, Tiled Splash Back, Inset Sink with Draining Board and Mixer Tap, Space and Plumbing for Washing Machine and Tumble Dryer, Tiled Floor

Study

Double Glazed Bay Window to Front, Radiator

Cloakroom

WC, Wash Hand Basin, Tiled to Water Sensitive Area



First Floor Accommodation

Landing

Double Glazed Window to Front, Access to all Bedrooms and Family Bathroom, Storage Cupboard

Bedroom 1

Double Glazed Window to Front, 2 x Built In Wardrobes, Door to En-Suite, Radiator

En-Suite

Dual Aspect Obscure Double Glazed Windows to Side and Rear, White Three Piece Suite Comprising of WC, Pedestal Sink and Shower Enclosure, Tiled to Water Sensitive Areas, Towel Rail and Radiator

Bedroom 2

Double Glazed Window to Front, Built In Wardrobe, Radiator

Bedroom 3

Double Glazed Window to Rear, Built In Wardrobe, Radiator

Bedroom 4

Double Glazed Window to Rear, Built In Wardrobe, Radiator

Bathroom

Obscure Double Glazed Window to Rear, White Three Piece Suite comprising of WC, Pedestal Sink and Panel Bath with Shower and Screen Over, Tiled to Water Sensitive Areas

External Features

Rear Garden

Private and Enclosed Rear Garden - Mostly Laid to Lawn with Patio and Decking Areas, Raised Flower Bed Edging to One Side, Pedestrian Access to Garage, Side Gate Access

Garage

Double Garage with 2 x Up and Over Doors, Power & Light, Pedestrian Door Access to Garden

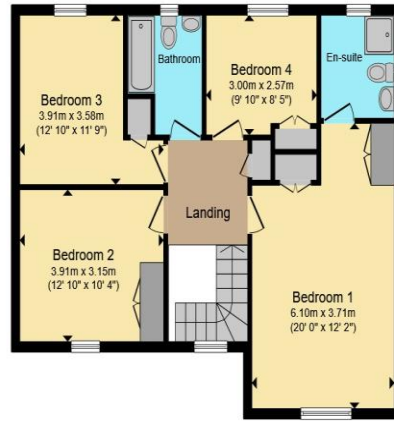
Parking

Large Driveway Parking to the Front for Multiple Cars

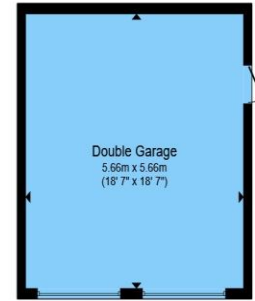




Ground Floor



First Floor



Garage

Total floor area 174.9 m² (1,883 sq.ft.) approx

This floor plan is for illustrative purposes only. It is not drawn to scale. Any measurements, floor areas (including any total floor area), openings and orientation are approximate. No details are guaranteed, they cannot be relied upon for any purpose and they do not form part of any agreement. No liability is taken for any error, omission or misstatement. A party must rely upon its own inspection(s). Powered by www.propertybox.io



To view this property please contact Connells on

T 01793 461757
E swindonoldtown@connells.co.uk

3-5 Victoria House, Albert St
 SWINDON SN1 3BG

Property Ref: SND103158 - 0010

Tenure:Freehold EPC Rating: B

Council Tax Band: F

view this property online
connells.co.uk/Property/SND103158



1. MONEY LAUNDERING REGULATIONS Intending purchasers will be asked to produce identification documentation at a later stage and we would ask for your co-operation in order that there will be no delay in agreeing the sale. 2. These particulars do not constitute part or all of an offer or contract. 3. The measurements indicated are supplied for guidance only and as such must be considered incorrect. Potential buyers are advised to recheck measurements before committing to any expense. 4. We have not tested any apparatus, equipment, fixtures, fittings or services and it is in the buyers interest to check the working condition of any appliances.

Connells Residential is registered in England and Wales under company number 1489613, Registered Office is Cumbria House, 16-20 Hockliffe Street, Leighton Buzzard, Bedfordshire, LU7 1GN. VAT Registration Number is 500 2481 05.

see all our properties at <http://www.connells.co.uk> | www.rightmove.co.uk | www.zoopla.co.uk