



Flat 3, 1 Olivia Court Court Road, Hythe - CT21 5FD

Guide Price **£365,000**

Approximate Gross Internal Area (Excluding balcony) = 92 sq m / 995 sq ft

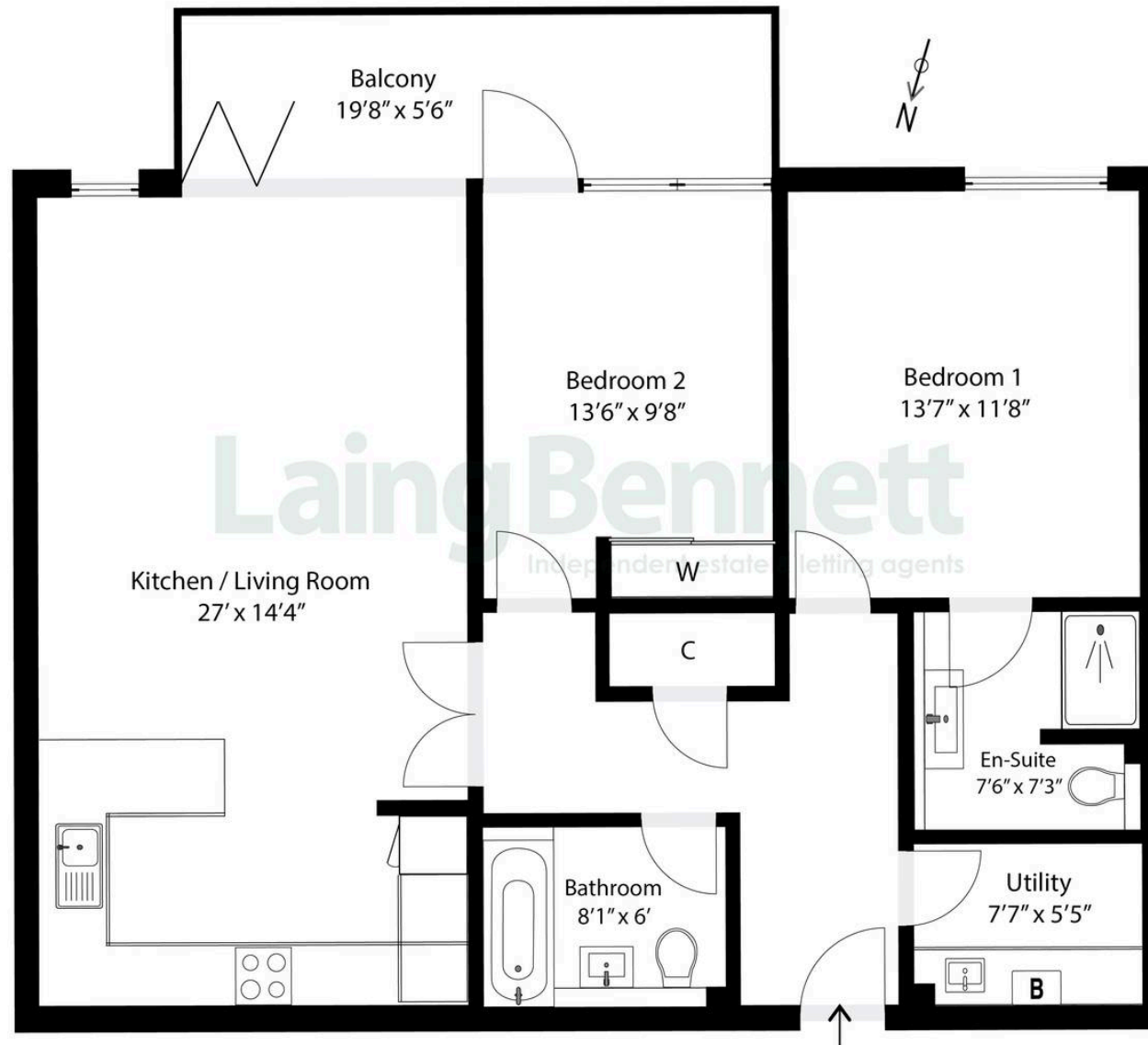


Illustration for Identification purposes only. Measurements are approximate. Dimensions given are between the widest points.

Not to scale. Outbuildings are not shown in actual location.

© Unauthorised reproduction prohibited - chriskemps@hotmail.com



Flat 3

1 Olivia Court Court Road, Hythe

This appealing apartment enjoys a fantastic coastal position, offering the perfect blend of seaside living and convenience. Just moments from the beach, it provides easy access to scenic promenades, independent cafés, and the vibrant local communities of both Hythe and Sandgate. The home boasts a generous open plan living space and also benefits from covered undercroft parking and a well-kept communal garden. Ideal as a tranquil main residence or a relaxing coastal retreat, it combines comfort, style, and an enviable location close to the shore.

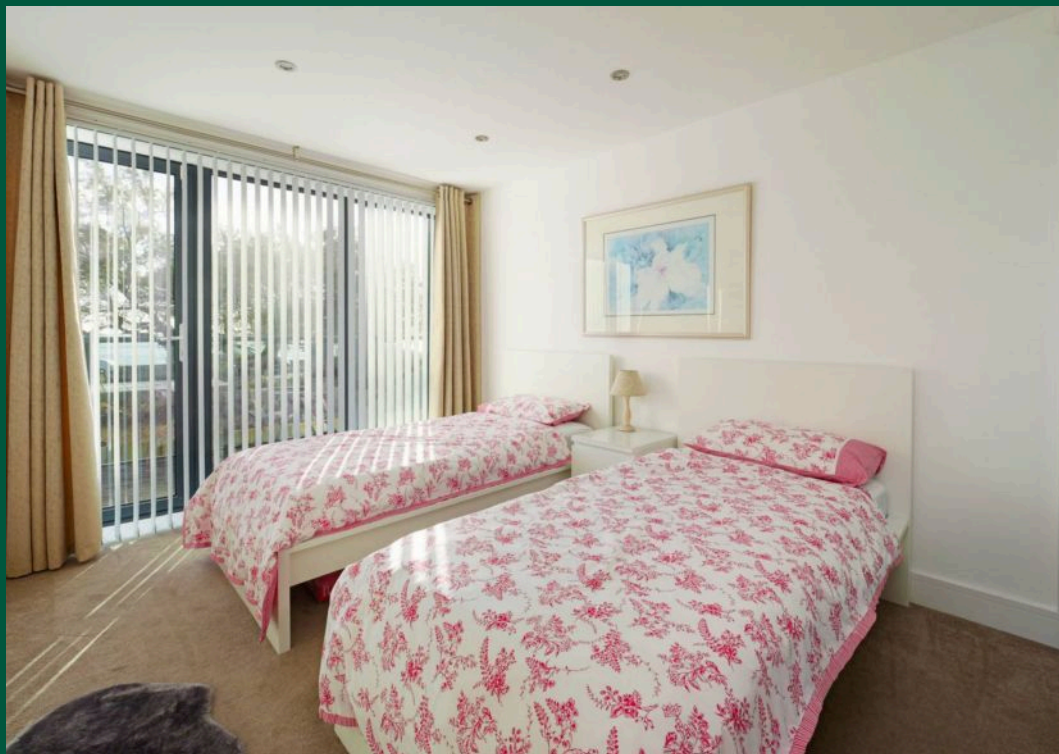
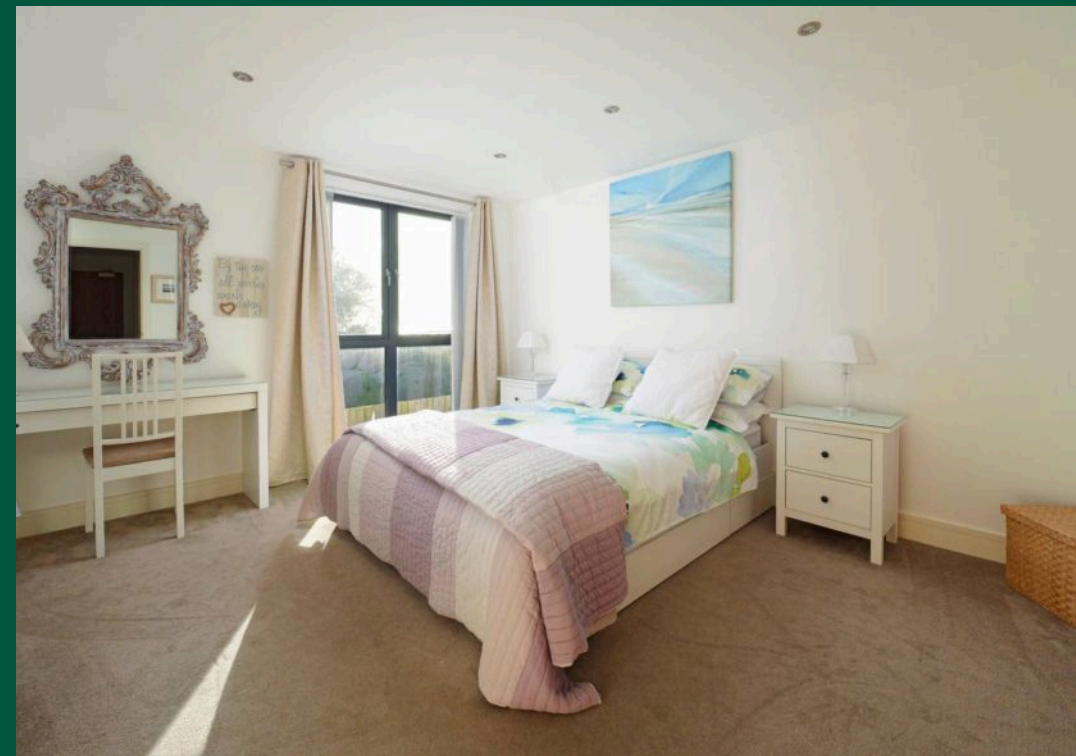
Council Tax band: D

Tenure: Leasehold

EPC Energy Efficiency Rating: C

EPC Environmental Impact Rating:









Laing Bennett

Laing Bennett Ltd, The Estate Office, 8 Station Road – CT18 8HP

01303 863393 • info@laingbennett.co.uk • www.laingbennett.co.uk/

DISCLAIMER – These details are for guidance only and do not form part of an offer or contract. Measurements are approximate. Laing Bennett Ltd and the Vendor/Landlord accept no liability. Services and appliances are untested. Applicants must make their own checks. Items shown may not be included. No staff have authority to give warranties.