



35 Seaway Avenue, Christchurch BH23 4EU

£1,750,000

Mitchells

1963 — TODAY



Seaway Avenue, Christchurch

An extraordinary coastal home of over 3000 sqft, set just five houses back (200m) from the award-winning Blue Flag beach at Friars Cliff and enjoying sea views from the sun balcony, master bedroom and en-suite. This stunning home offers luxurious living space with an unrivalled specification having been meticulously refurbished, skilfully extended and professionally landscaped and now offers exceptional accommodation in this fabulous location.



The Property

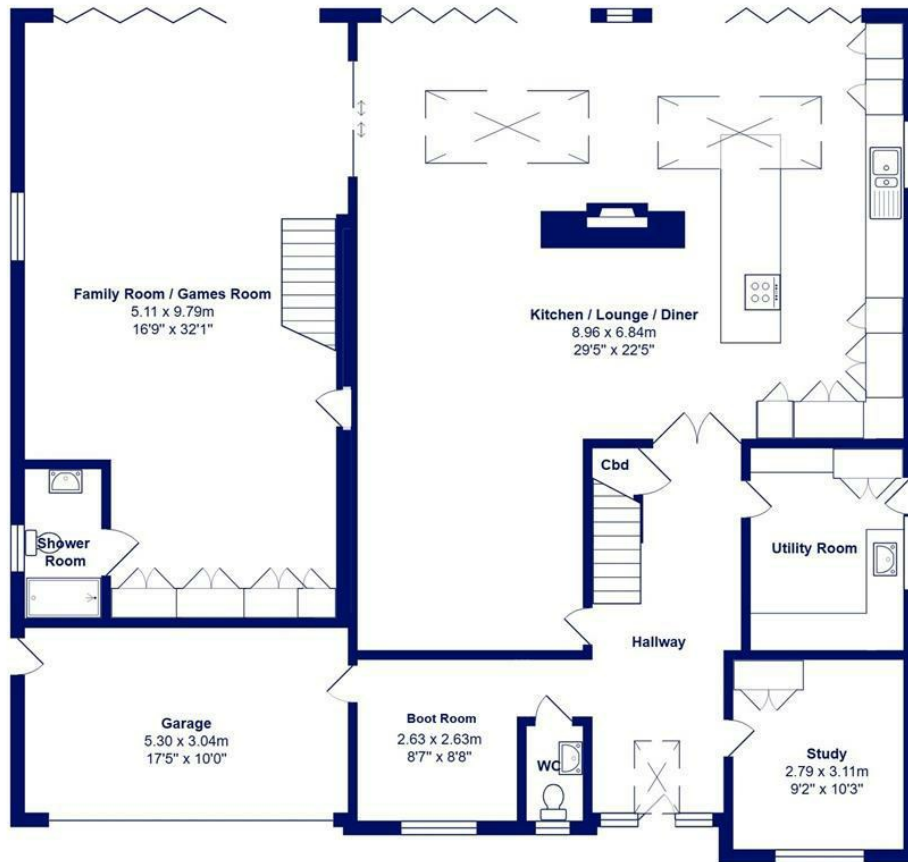
- Comprehensively remodelled and modernised in every respect over the last 18 months - extremely high-end specification
- Designer Keller kitchen with solid stone Quartz worktops, huge island and comprehensive appliance package including Quooker tap triple Neff ovens, wine cooler and waste disposal
- Underfloor heating throughout ground floor, Amtico flooring, high density carpet and luxury ceramic tiled floors
- Sanitary ware by Hans Grohe, Duravit, Geberit and tiling by Porcelanosa
- Aluminium windows, triple track patio doors, electric blinds, rain sensor Velux, ambient lighting in main living space/garden
- Electric double door to garage/store, two external showers with hot/cold feed and parking for five cars
- Full alarm system and CCTV front and rear
- A hugely impressive home in this prestigious location
- Council Tax 'G' £3813.00
- EPC 'C' (potential B)



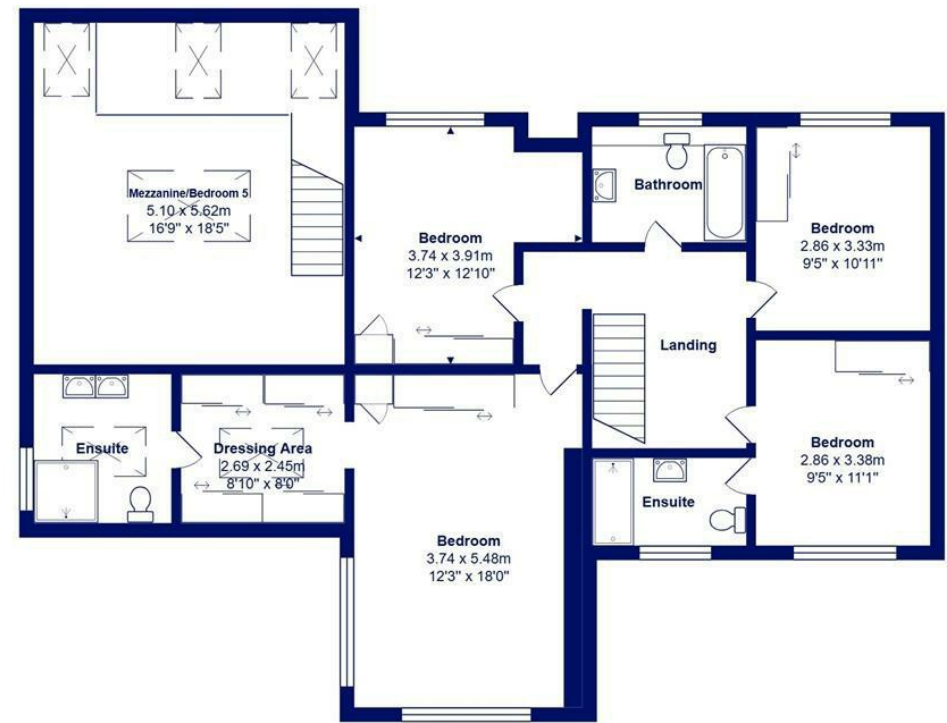


Location





Ground Floor

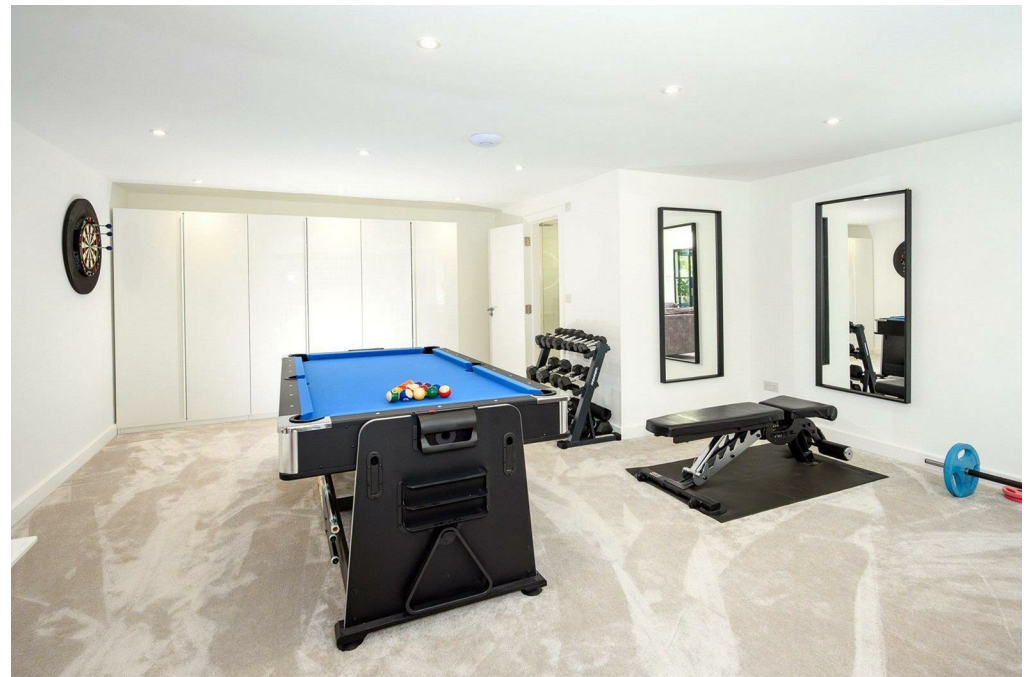
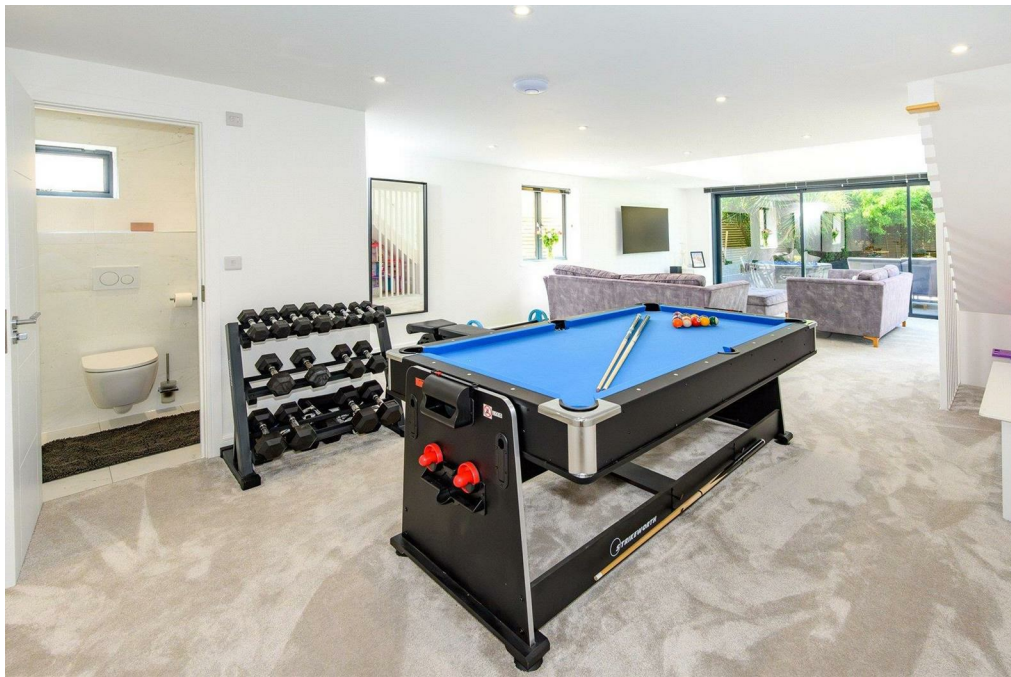


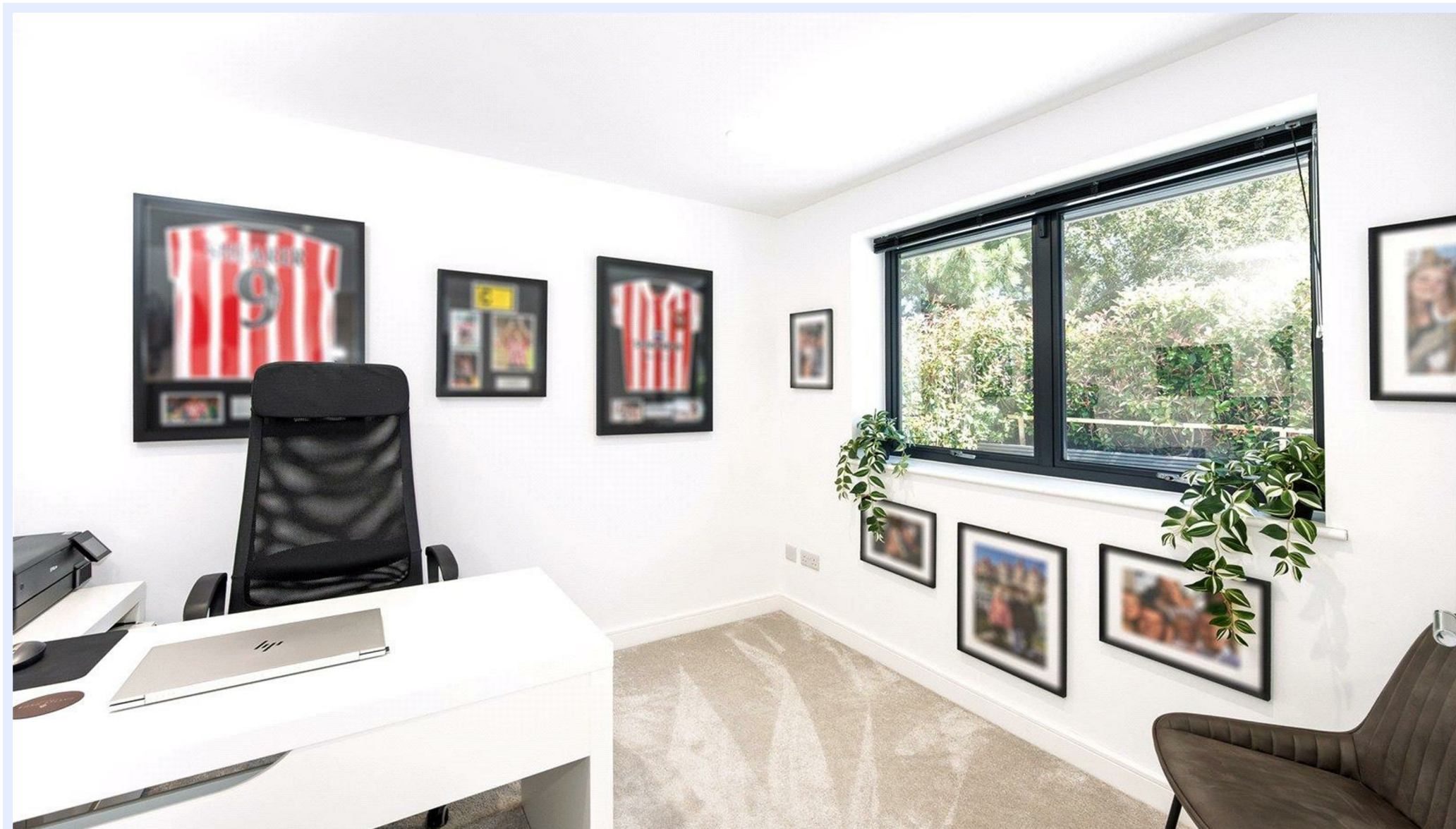
First Floor



Total Area: 287.3 m² ... 3092 ft² (excluding garage)
All measurements are approximate and for display purposes only







www.mitchells.uk.com
Highcliffe@mitchells.uk.com
01425 272206

Highcliffe
284 Lymington Road
Highcliffe
Christchurch
BH23 5ET

