



Connells

Hartington Street
Chatham



Property Description

This two bed mid-terrace house has a well suited layout for first time buyers, small families or couples. It also has a bathroom downstairs which is convenient for guests or for easy access. Its location is close to schools and has easy transport links making it easy for commuting or for leisure.



Lounge

12' 3" x 9' 10" (3.73m x 3.00m)

Dining Room

12' 9" x 9' 11" (3.89m x 3.02m)

Kitchen

10' 4" x 6' 5" (3.15m x 1.96m)

Cellar

12' 10" x 12' 4" (3.91m x 3.76m)

Bathroom

Bedroom One

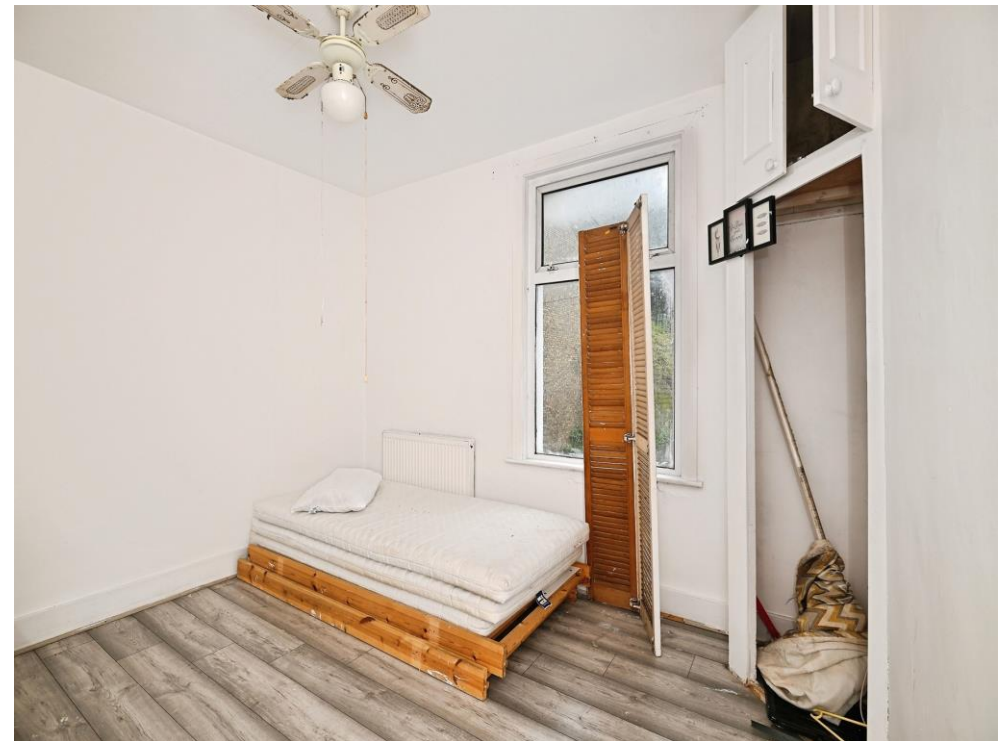
11' 11" x 9' 7" (3.63m x 2.92m)

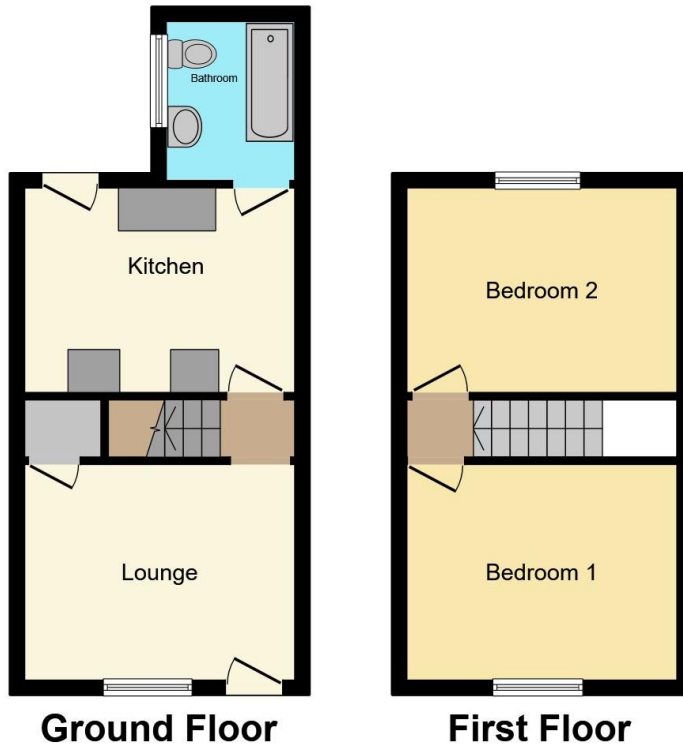
Bedroom Two

12' 1" x 11' 2" (3.68m x 3.40m)

Agents Note

We have limited knowledge about this property, but this does not take away our responsibility to evidence that we have taken steps to establish facts and use our professional knowledge.





Total floor area 55.8 m² (600 sq.ft.) approx

This floor plan is for illustrative purposes only. It is not drawn to scale. Any measurements, floor areas (including any total floor area), openings and orientation are approximate. No details are guaranteed, they cannot be relied upon for any purpose and they do not form part of any agreement. No liability is taken for any error, omission or misstatement. A party must rely upon its own inspection(s). Powered by www.propertybox.io



To view this property please contact Connells on

T 01634 233400
E rainham@connells.co.uk

21 High Street
 RAINHAM ME8 7HX

EPC Rating: D Council Tax
 Band: B

view this property online connells.co.uk/Property/RAL103846

Tenure: Freehold



1. MONEY LAUNDERING REGULATIONS Intending purchasers will be asked to produce identification documentation at a later stage and we would ask for your co-operation in order that there will be no delay in agreeing the sale. 2. These particulars do not constitute part or all of an offer or contract. 3. The measurements indicated are supplied for guidance only and as such must be considered incorrect. Potential buyers are advised to recheck measurements before committing to any expense. 4. We have not tested any apparatus, equipment, fixtures, fittings or services and it is in the buyers interest to check the working condition of any appliances.

Connells Residential is registered in England and Wales under company number 1489613, Registered Office is Cumbria House, 16-20 Hockliffe Street, Leighton Buzzard, Bedfordshire, LU7 1GN. VAT Registration Number is 500 2481 05.

See all our properties at www.connells.co.uk | www.rightmove.co.uk | www.zoopla.co.uk

Property Ref: RAL103846 - 0005