

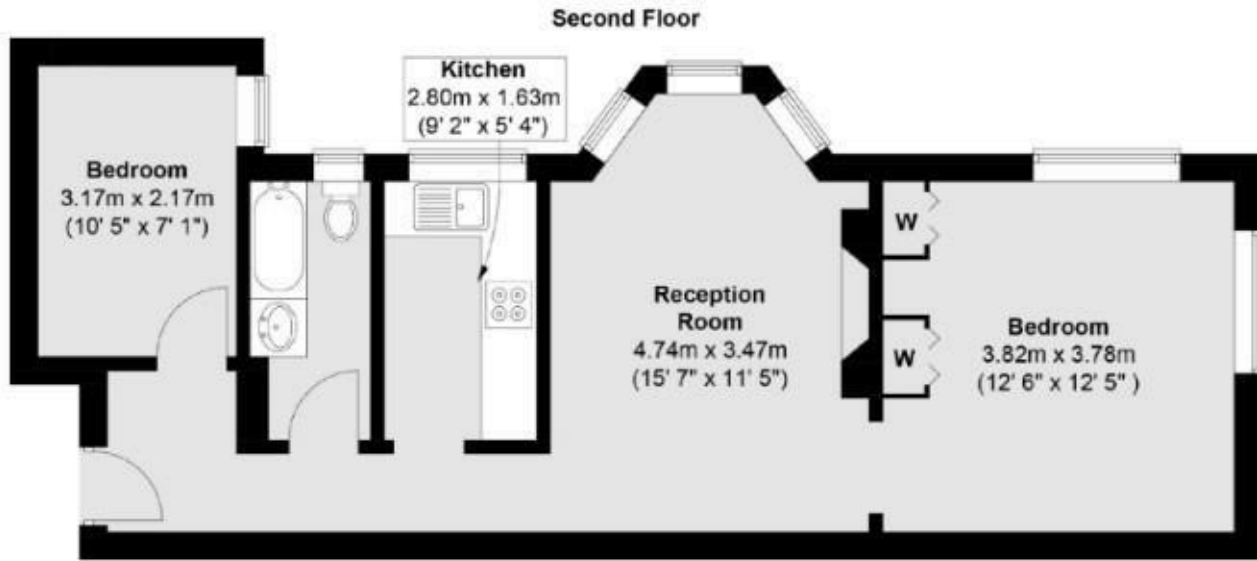
Rolfe East



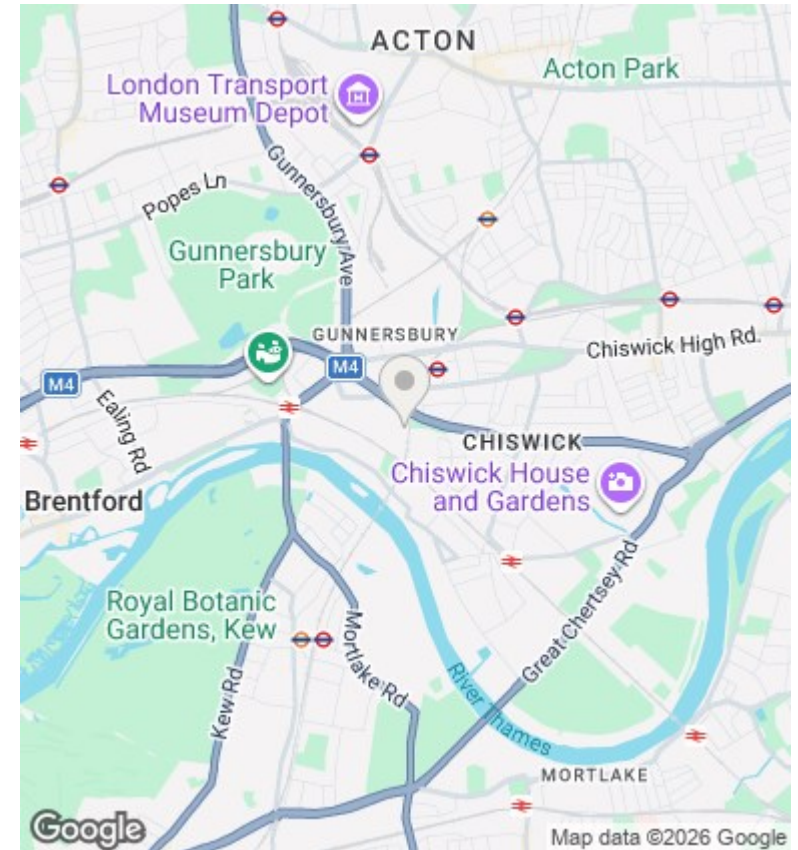
Chiswick Village, Chiswick, W4 3BY

£2,000 pcm

- Available Mid July
- Unfurnished
- Two Bedroom Apartment
- 0.27 Miles to Gunnersbury Station
- Communal Gardens



Total area (approx.) : 54 sq. m (581 sq. ft)



Directions

Viewings

Viewings by arrangement only. Call 020 8993 7755 to make an appointment.

Council Tax Band

C

EPC Rating:

Energy Efficiency Rating		
	Current	Potential
<i>Very energy efficient - lower running costs</i>		
(92 plus) A		
(81-91) B		
(69-80) C		
(55-68) D		
(39-54) E		
(21-38) F		
(1-20) G		
<i>Not energy efficient - higher running costs</i>		
England & Wales	EU Directive 2002/91/EC	