



## HARBORD STREET, SW6

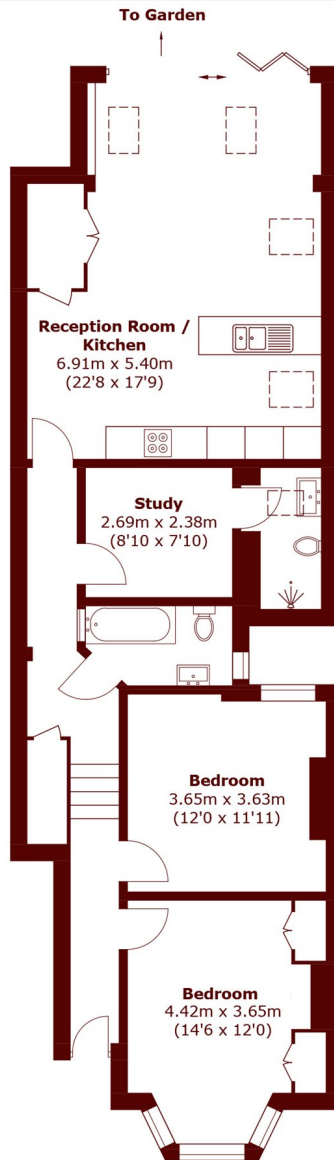
£850,000

This well-presented three bedroom period maisonette combines classic charm with modern design, creating the perfect home for buyers looking for space, style, and convenience.

Three bedrooms  
South facing garden  
Over 1000sqft/94sqm

Alphabet street  
29ft reception room/kitchen  
Two bathrooms

# STEP INSIDE HARBORD STREET



Total area (approx.): 93.7 sq. m (1,008.5 sq. ft)

**Bishops Park**  
020 7993 9888

Energy Rating: C We aim to make our particulars both accurate and reliable. However, they are not guaranteed; nor do they form part of an offer or contract. If you require clarification on any points then please contact us, especially if you're traveling some distance to view. Please note that appliances and heating systems have not been tested and therefore no warranties can be given as to their good working order

**MARSH &  
PARSONS**