



WOODSTOCK GROVE W12



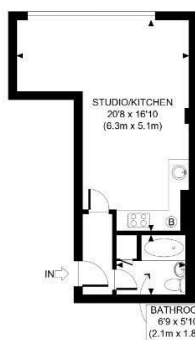


- CONTEMPORARY STUDIO • OPEN PLAN KITCHEN • BATHROOM • FURNISHED • EXCELLENT TRANSPORT LINKS • EPC RATING C • NO PARKING PERMITS ALLOCATED FOR THIS BUILDING • MOMENTS FROM WESTFIELD WHITE CITY • AVAILABLE MID TO END OF FEBRUARY • COUNCIL TAX BAND C

A bright studio flat with a modern fully fitted kitchen and bathroom. Located just a few minutes' walk for the Central Line and London Overground at Shepherds Bush and the vast shopping and dining amenities at Westfield White City. No parking permits allocated for this building. Furnished. Available mid to end of February. Council Tax Band C.



WOODSTOCK GROVE, W12



FIRST FLOOR
GROSS INTERNAL
FLOOR AREA 325 SQ FT

APPROX. GROSS INTERNAL FLOOR AREA: 325 SQ FT/ 30 SQM

This plan is for illustrative purposes only and should be used as such by any prospective client. Whilst every attempt has been made to ensure the accuracy of the Floor Plan contained here, measurements of the doors, windows, rooms and any other items are approximate and no responsibility is taken for any errors, omissions, or misstatement. The services, systems and appliances shown have not been tested and no guarantee as to the operability or efficiency can be given.

PROPERTY PHOTO PLANS

138 Shepherds Bush Road, London, W6 7PB
Tel: 020 7371 4071 lettings@finlaybrewer.co.uk