



## ATRIA HOUSE, SL1

**£1,300 pcm**

This bright 392 sq/ft luxury apartment features real oak flooring, a designer kitchen, and a versatile study room. Floor-to-ceiling windows maximize natural light throughout the spacious, high-specification open-plan layout.

- Additional Study Room
- Designer Open-Plan Kitchen
- Premium Oak Flooring
- Secure Video Entry

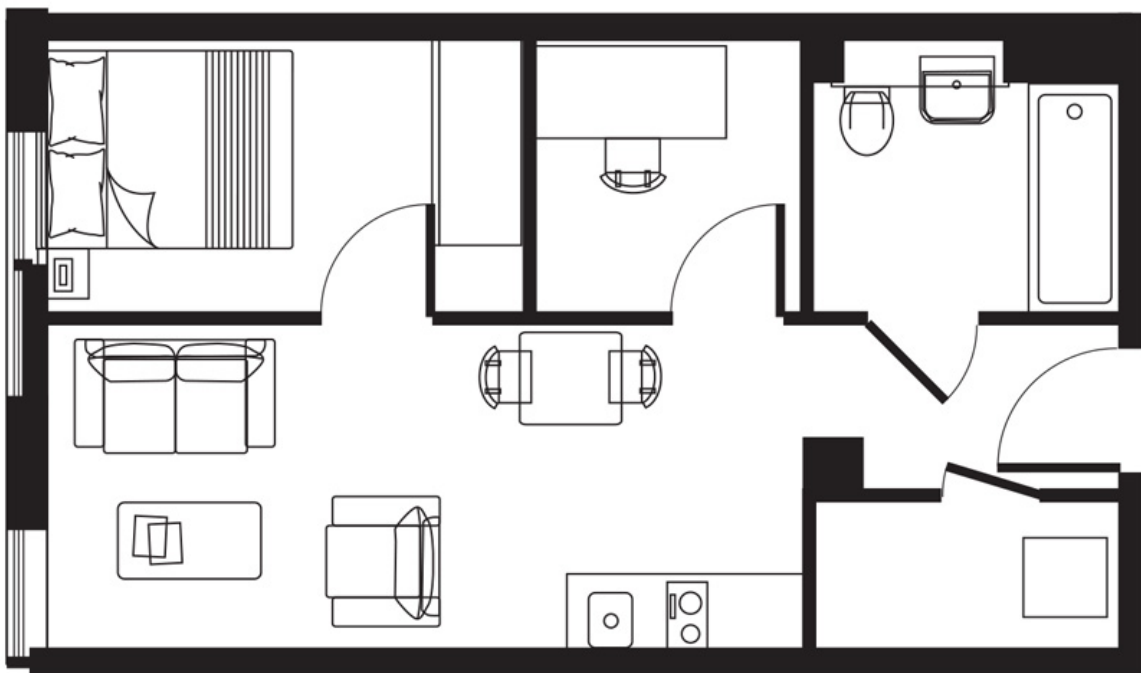


## ABOUT THE HOME

Perfectly positioned near Slough town centre, this property offers excellent transport links via bus and rail. Residents enjoy quick access to Slough Station for effortless commutes directly into Paddington.







Approx area: 36.8 sq m / 396 sq ft

**LiFE RESIDENTIAL**

203 Trentham Court, Victoria  
Road, London, W3 6BT  
Sales: 020 3668 1112  
Lettings: 020 3668 1111

Energy Rating: E. We aim to make our particulars both accurate and reliable. However they are not guaranteed; nor do they form part of an offer or contract. If you require clarification on any points then please contact us, especially if you're traveling some distance to view. Please note that appliances and heating systems have not been tested and therefore no warranties can be given as to their good working order.