

richard
james



Pavy Cottages

Markham Road, Wroughton, SN4 9JT

Guide Price
£295,000





Pavy Cottages

Markham Road, Wroughton, SN4 9JT

Freehold | EPC Rating - D

 3  1  2

Situated in this sought after road in the highly desirable village of Wroughton is this delightful three-bedroom cottage. Offering a wonderful blend of character, space, and versatility, ideal for families, first-time buyers, or those seeking a peaceful village lifestyle.

The ground floor welcomes you with a spacious and light-filled reception room, featuring an attractive bay window, open fireplace and ample space for both living and dining. To the rear, a well-proportioned kitchen provides practical workspace and storage, with direct access through to a bright conservatory—perfect as a second sitting area, dining space, or garden room. A family bathroom with roll top bath is conveniently located on the ground floor, completing a well-balanced and functional layout.



Ellis-Rose Wigley
Branch Manager

01793 814 542

ellisrosewigley@richardjames.uk



Scan here

   @rjestateagent

Cottage
Style
Kitchen





Upstairs, the property offers three bedrooms, including a generous double principal bedroom and a well-sized second bedroom, alongside a third bedroom ideal as a child's room, guest space, or home office.

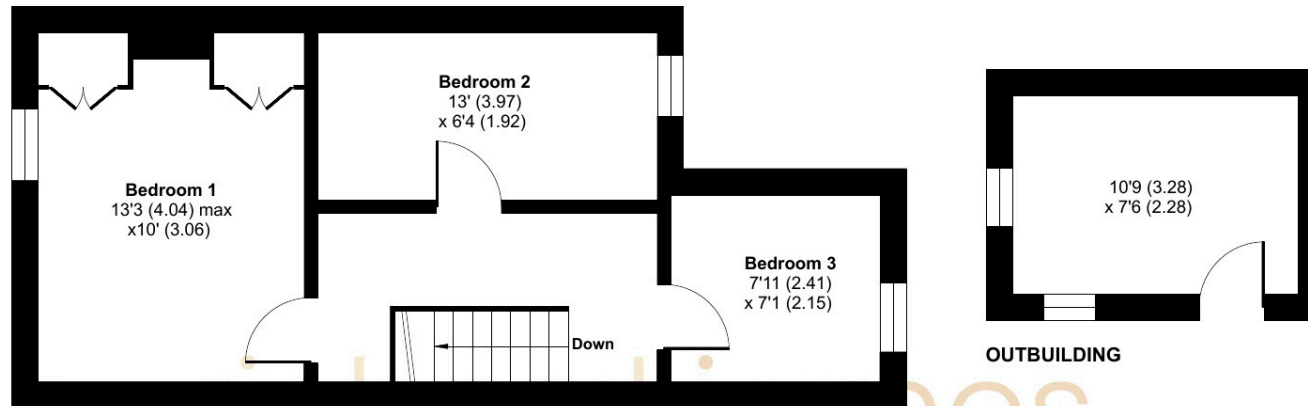


Externally, the property benefits from an outbuilding, offering excellent potential for use as a home office or additional storage, adding further flexibility to the home. There is also a driveway parking space to the front of the property.

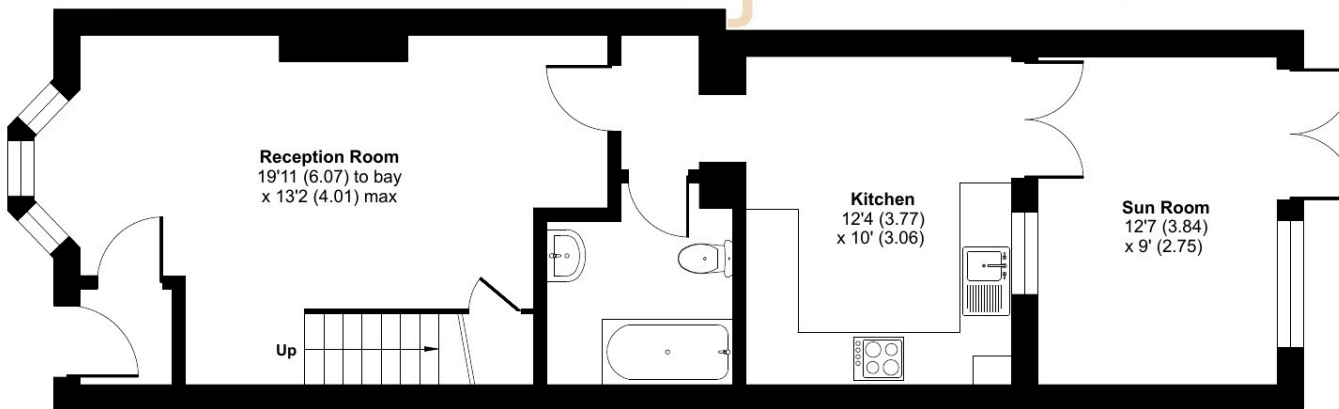
With approximately 951 sq ft of internal accommodation, plus the additional outbuilding, this home provides a fantastic opportunity to enjoy comfortable living in a sought-after village setting.



Approximate Area = 951 sq ft / 88.3 sq m
Outbuilding = 80 sq ft / 7.4 sq m
Total = 1031 sq ft / 95.7 sq m
For identification only - Not to scale



FIRST FLOOR



GROUND FLOOR

 Floor plan produced in accordance with RICS Property Measurement 2nd Edition, incorporating International Property Measurement Standards (IPMS2 Residential). © nchecon 2026. Produced for Richard James. REF: 1440385

01793 814 542

wroughton@richardjames.uk

80 High Street | Wroughton | SN4 9JZ

richardjames.uk

