



8 Briar Close, Borrowash, Derby, DE72 3GB

£1,650 Per Month

8 Briar Close, Derby DE72 3GB

Immaculately presented five-bedroom family property which has been extended to the side and rear. This is a unique property for a large family located in the popular village of Borrowash with local amenities close by. The location also has good transport links to Nottingham & Derby.

The accommodation comprises of entrance hallway with storage, good size lounge located to the front of the property, open plan dining/kitchen and sitting room. The kitchen has contemporary fitted units with matching range of wall and base units, quartz work tops and matching back panels, integrated induction hob with extractor over, two single electric ovens and space for dishwasher. The dining area has bi fold doors open to the rear garden. Also to the ground floor is an inner hallway leading to a utility room with space and plumbing for a washing machine, separate office space and guest WC.

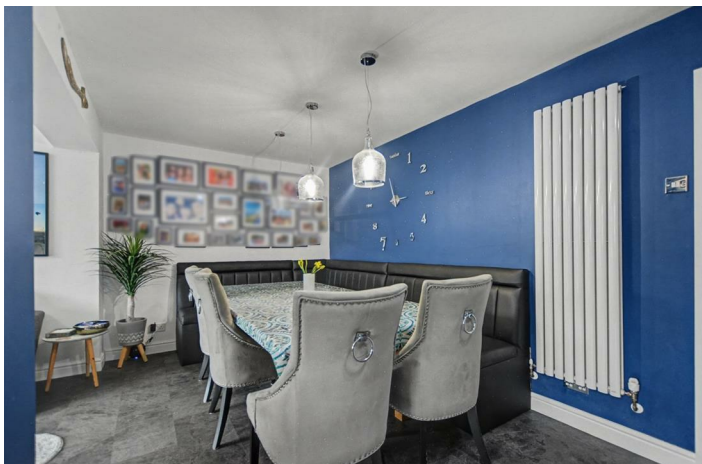
To the first floor are four double bedrooms with ensuite to bedroom one and a large single, there is also a family bathroom with bath and mains powered shower over, low level WC and wash hand basin.

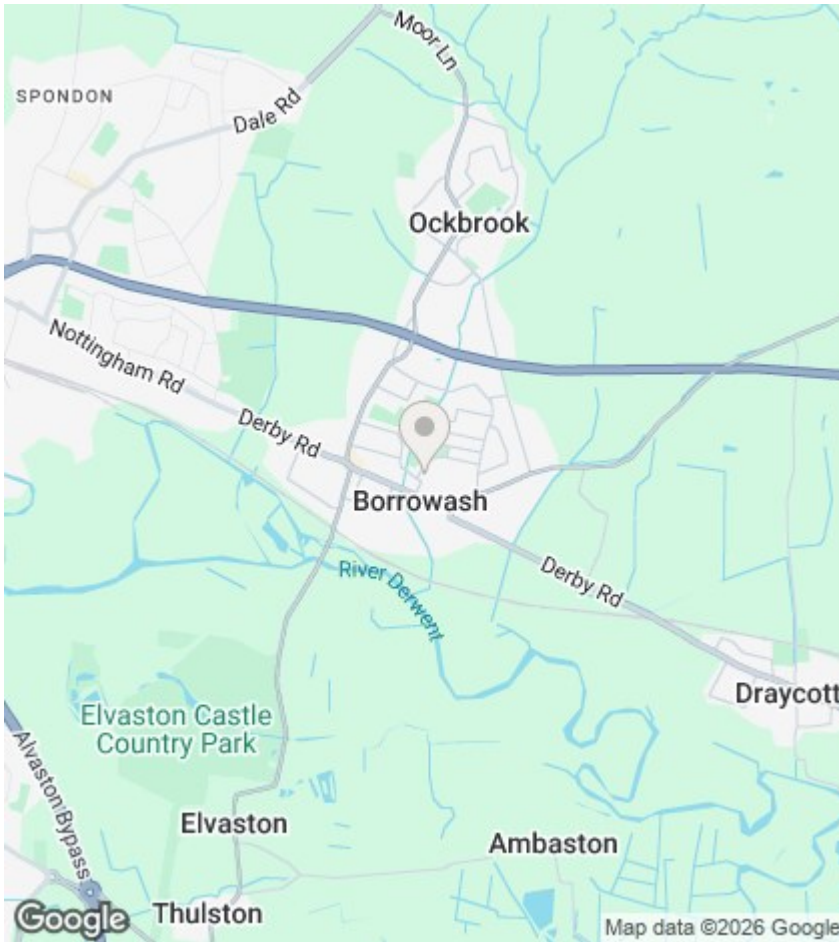
Outside the property is a large driveway, garage and to the rear is a decking area, lawn and garden with mature shrubs.

Available Early June. Accompanied viewing.



Council Tax Band: B





Directions

Viewings

Viewings by arrangement only. Call 0115 9466946 to make an appointment.

EPC Rating:

C

