

# DUNWORTH MEWS, W I I



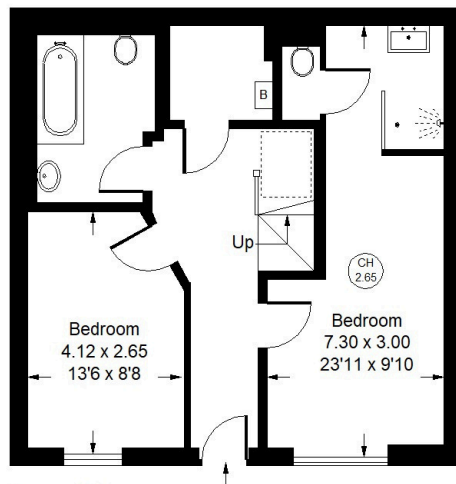
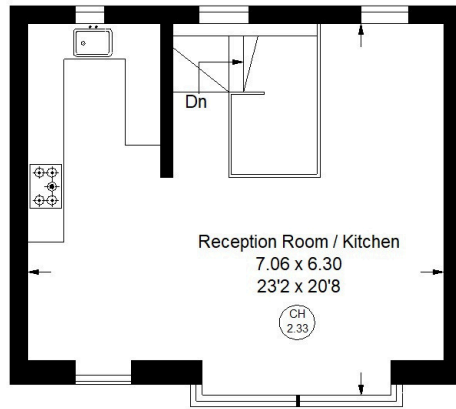


## Dunworth Mews, W11

A beautifully presented two bedroom house with garage parking, situated within a quiet gated cobbled mews in the heart of Notting Hill. The private mews is impeccably maintained, offering a peaceful setting in this vibrant location. The first floor features a spacious and light-filled open-plan reception, dining and kitchen area with lovely views across the mews. The ground floor comprises a principal bedroom with en-suite shower room, a second double bedroom, a family bathroom, and an additional storage room. Dunworth Mews is ideally located just off Portobello Road, within easy reach of the boutiques, cafés and restaurants of Westbourne Grove. Excellent transport connections are available via Notting Hill Gate and Ladbroke Grove stations.



Approx. Gross Internal Area  
= 93.4 sq m / 1,005 sq ft



Ground and First Floor



## Dunworth Mews, W11 - Share of Freehold Local Authority - Royal Borough of Kensington & Chelsea

- Two Double Bedrooms
- Quiet Gated Cobbled Mews
- Large Open-plan Living Area
- Garage Parking
- EPC = C
- Council Tax Band = F



Whilst every attempt has been made to ensure the accuracy of the floor plan, measurements are approximate and not to scale. No guarantee is given on the total square footage of the property quoted on the plan. Figures given are for guidance. Plan is for illustration purposes only, not to be used for valuations.