

4 Hebden Place London

£850 Per Week

This two bedroom apartment is located in the superb Nine Elms Point development. Nine Elms Point is a stunning collection of apartments, which benefit from a 24 hour concierge, fitness centre and beautiful landscaped courtyards. Nine Elms Point is located beside the Nine Elms Northern Line tube station, and above a flagship 80,000 sq ft Sainsbury's. The development also benefits from existing National Rail and London Underground connections at Vauxhall.

Council Tax Band: Lambeth- F
Change of contract fee: £50 including VAT
Lift access | Cladding: EWS1 Certificate available
Holding Deposit - £850 (1 weeks rent, subject to agreed offer)

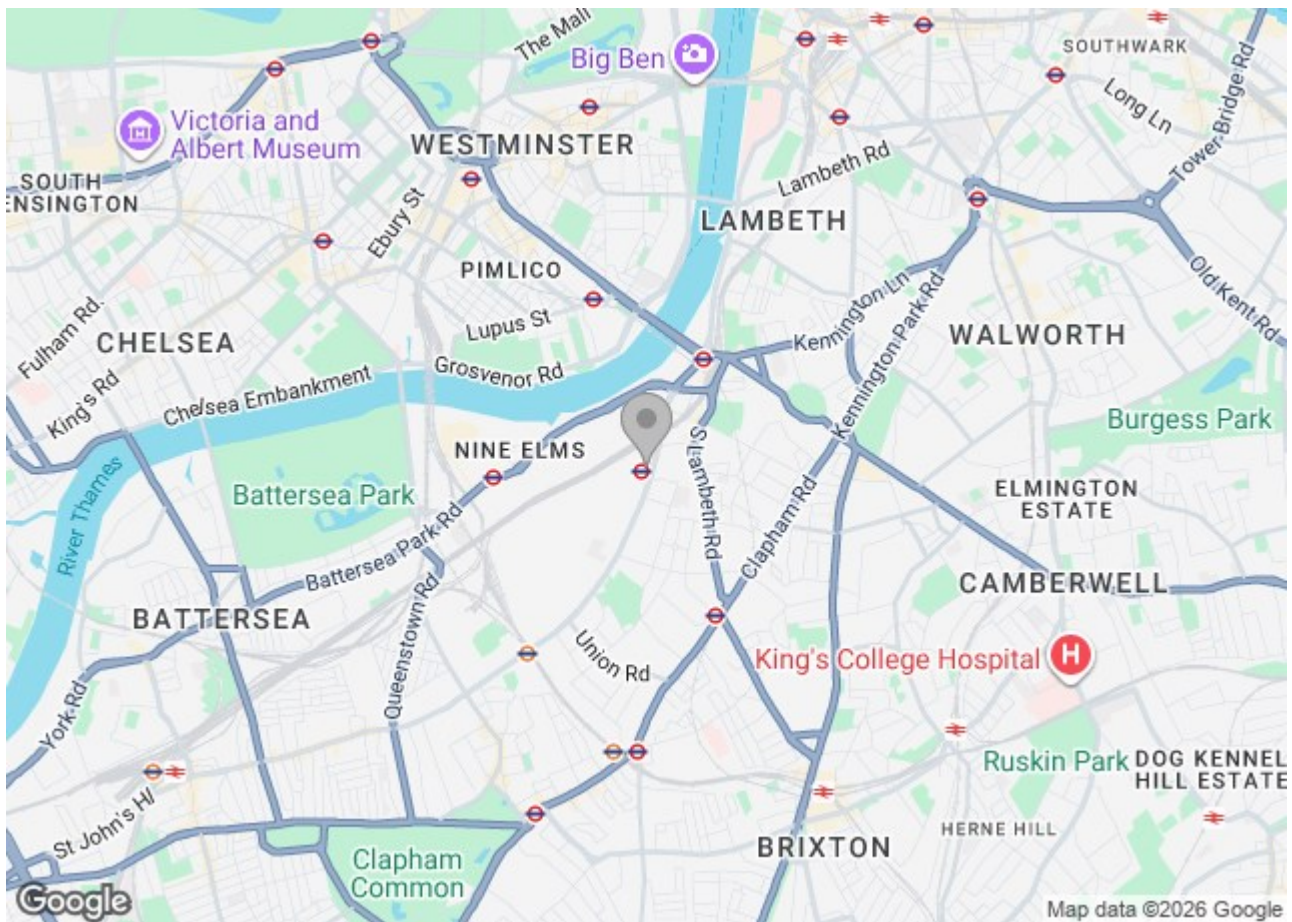
Electricity supply – Mains | Cold Water supply – Mains | Sewerage – Mains | Hot water, heating – Communal | Internet: Fibre

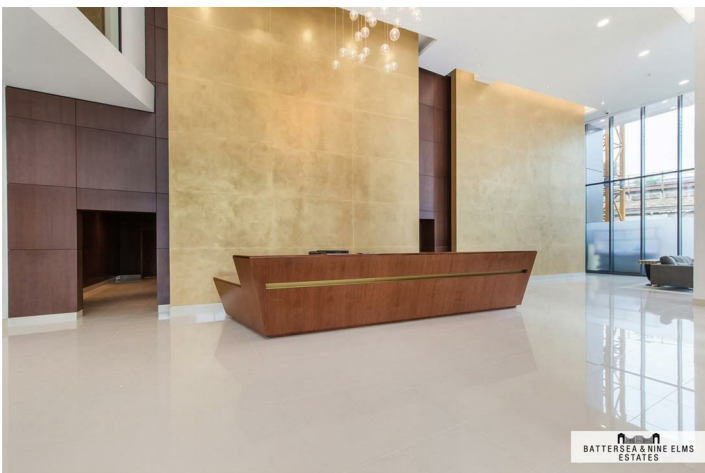
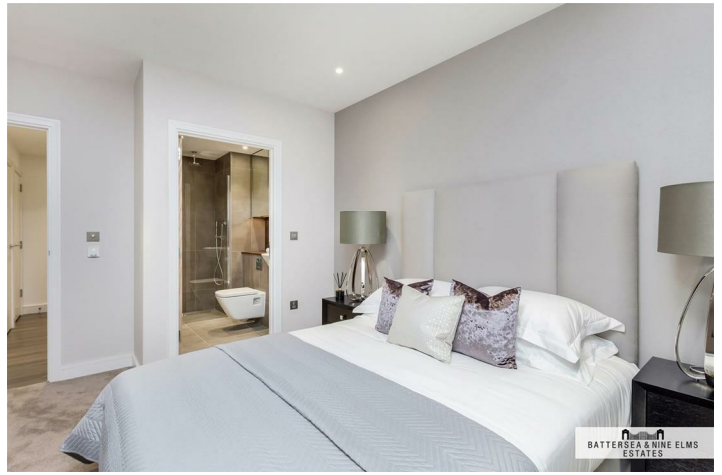
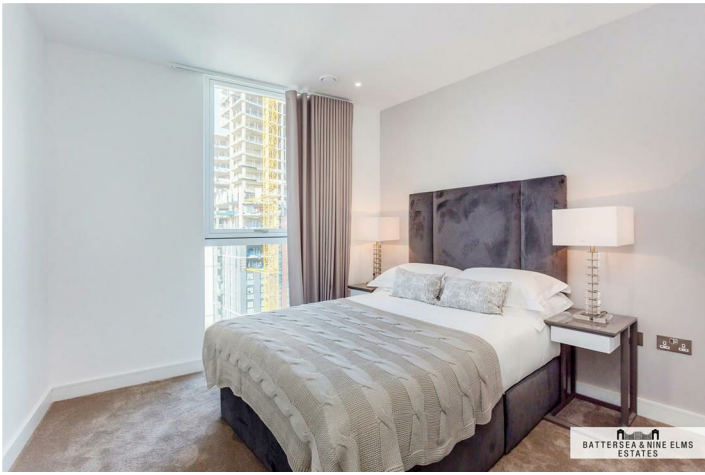
To check broadband and mobile phone coverage please visit Ofcom.
To check planning permission please visit Lambeth Council Website, Planning & Building Control

4 Hebden Place London



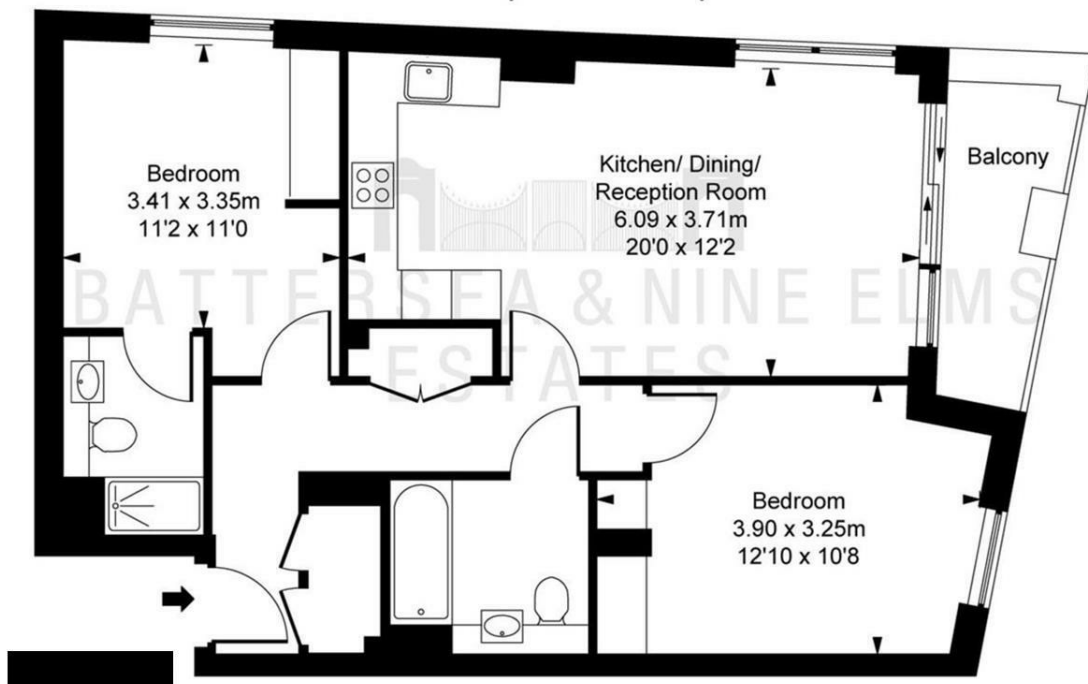
- Two double bedrooms
- Two bathrooms
- Contemporary design
- Fully integrated appliances
- Beautiful communal grounds
- Excellent transport links
- Cinema room
- 24 house concierge





Floor Plan

Pinto Tower,
 Hebden Place,
 Nine Elms, SW8
 Approximate Gross Internal Area
 68.40 sq m / 736 sq ft



This plan is not to scale. It is for guidance and not for valuation purposes.
 All measurements and areas are approximate only, and have been prepared in accordance with the current edition of the RICS Code of Measuring Practice.
 © Fulham Performance

These particulars, whilst believed to be accurate are set out as a general outline only for guidance and do not constitute any part of an offer or contract. Intending purchasers should not rely on them as statements of representation of fact, but must satisfy themselves by inspection or otherwise as to their accuracy. No person in this firm's employment has the authority to make or give any representation or warranty in respect of the property.

