

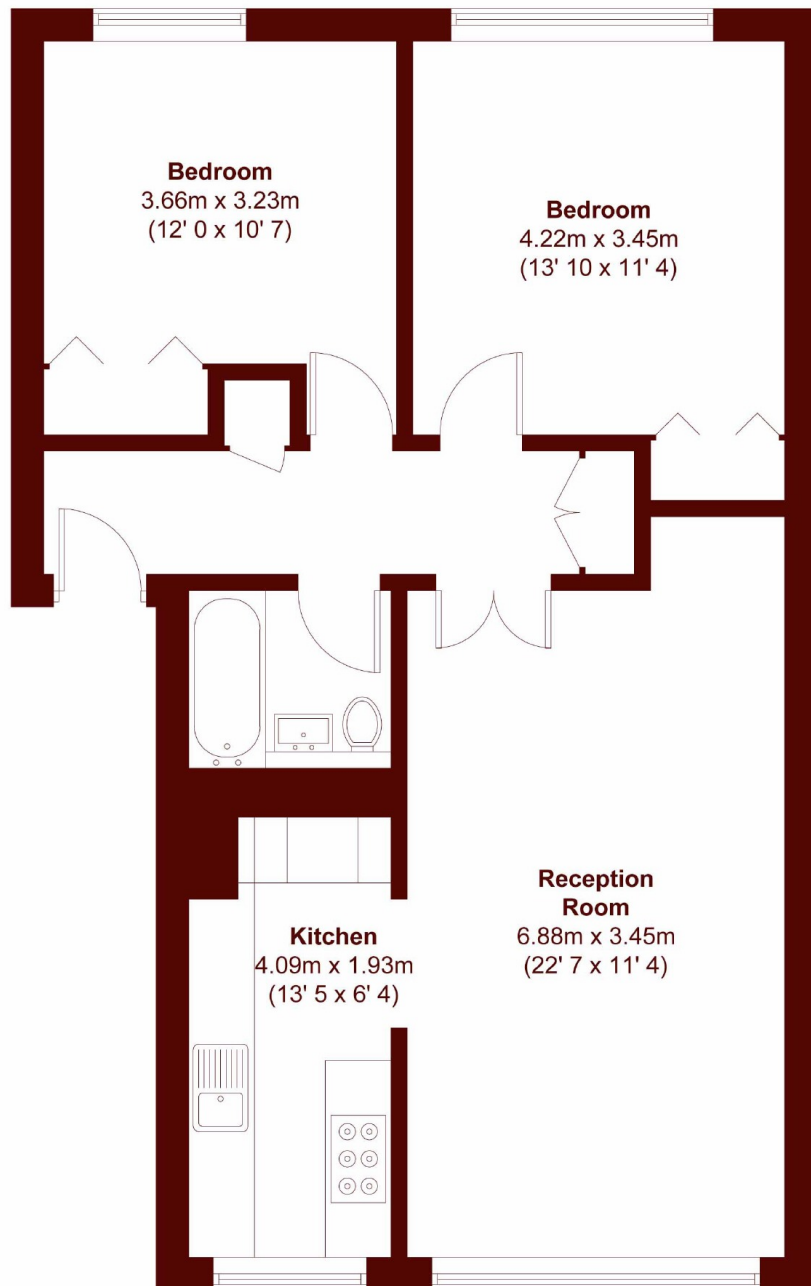


Kersfield Road, SW15

£475,000



- 1st Floor
- Modern Decor Throughout
- Lift Access
- Two Spacious Bedrooms
- Off Street Parking
- Lovely Communal Gardens



APPROX. GROSS INTERNAL FLOOR AREA
747 SQFT / 69.4 SQM

Marsh & Parsons Barnes

73-75 Church Road, London,
SW13 9HH
020 8563 8333

We aim to make our particulars both accurate and reliable. However, they are not guaranteed; nor do they form part of an offer or contract. If you require clarification on any points then please contact us, especially if you're traveling some distance to view. Please note that appliances and heating systems have not been tested and therefore no warranties can be given as to their good working order.