



18 Meadow Nook Drive, Lathom

Skelmersdale

Guide Price £345,000

# 18 Meadow Nook Drive

Lathom, Skelmersdale

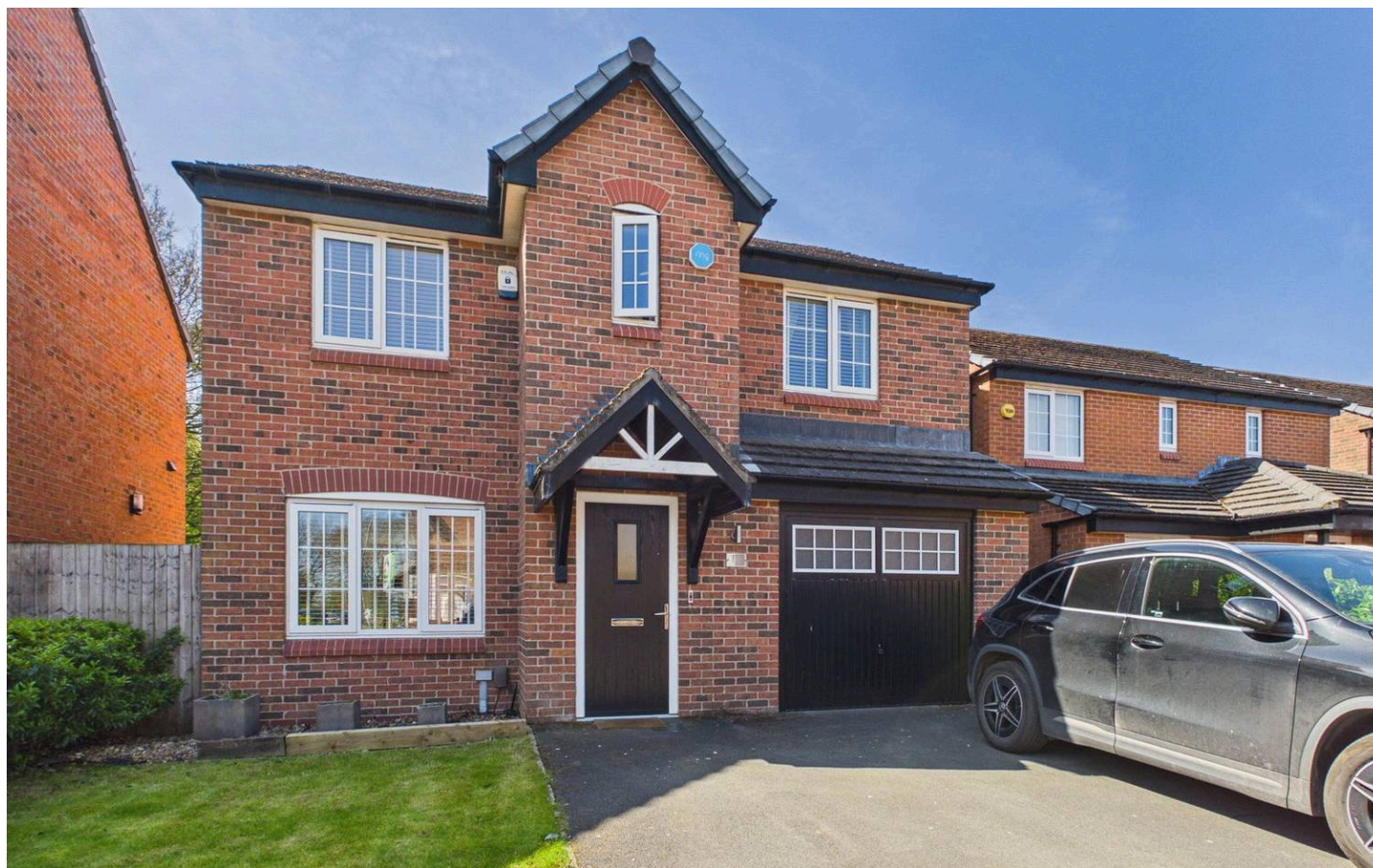
Set on the sought-after Meadow Nook Drive in Lathom, this beautifully presented four-bedroom detached home offers a stylish blend of modern design, energy efficiency, and comfortable family living. The ground floor features a bright open-plan layout, with a spacious living and dining area flowing seamlessly into a sleek high-gloss kitchen with quartz worktops—perfect for both everyday life and entertaining. A utility room and downstairs WC add practicality. Upstairs provides four well-proportioned bedrooms, including a principal suite with fitted wardrobes and en-suite, alongside a contemporary family bathroom. Outside, the home benefits from a private rear garden ideal for relaxing or socialising, plus a driveway and garage for convenient parking. Positioned in a peaceful yet well-connected location, it offers easy access to local amenities and transport links, making it an ideal modern family home.

Council Tax band: D

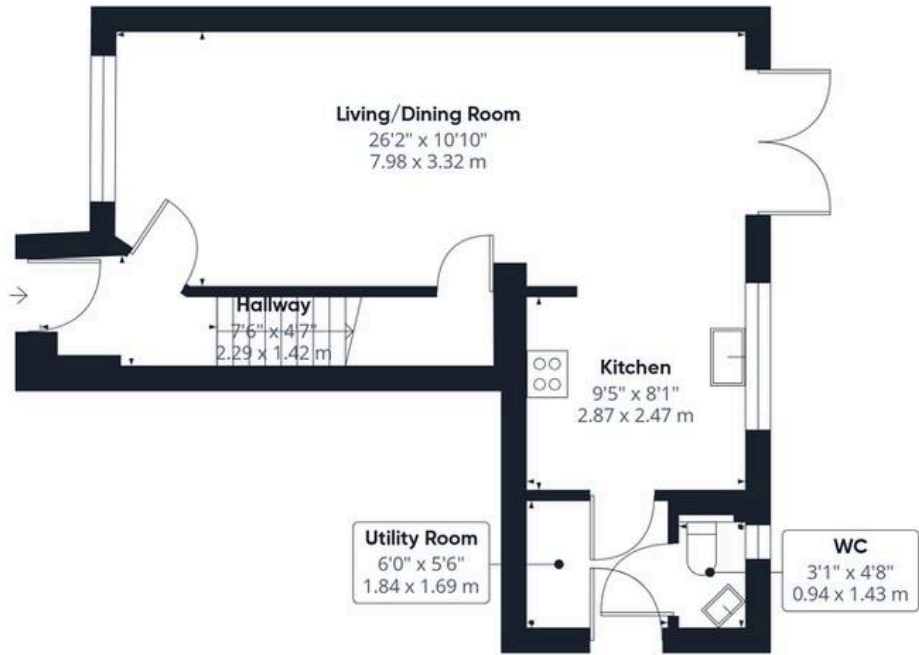
Tenure: Freehold

EPC Energy Efficiency Rating: B

EPC Environmental Impact Rating: B



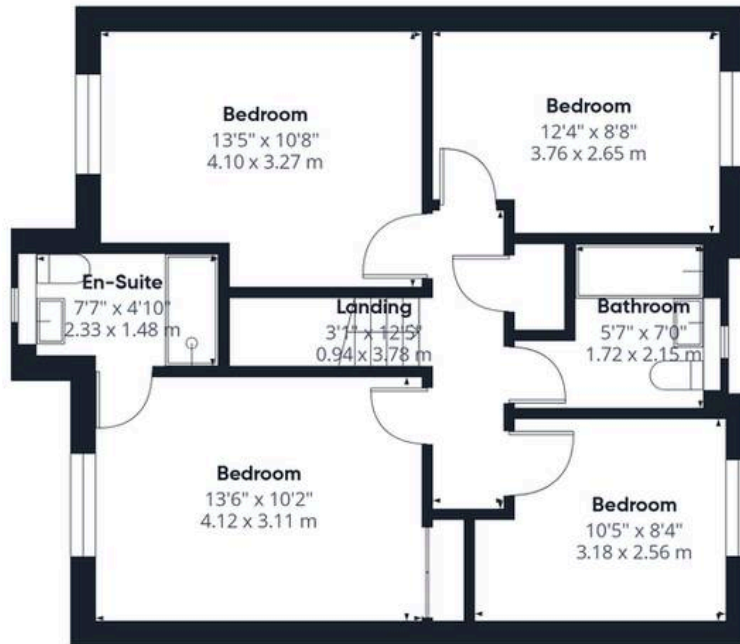




Ground Floor

Approximate total area<sup>(1)</sup>

1076 ft<sup>2</sup>  
99.7 m<sup>2</sup>



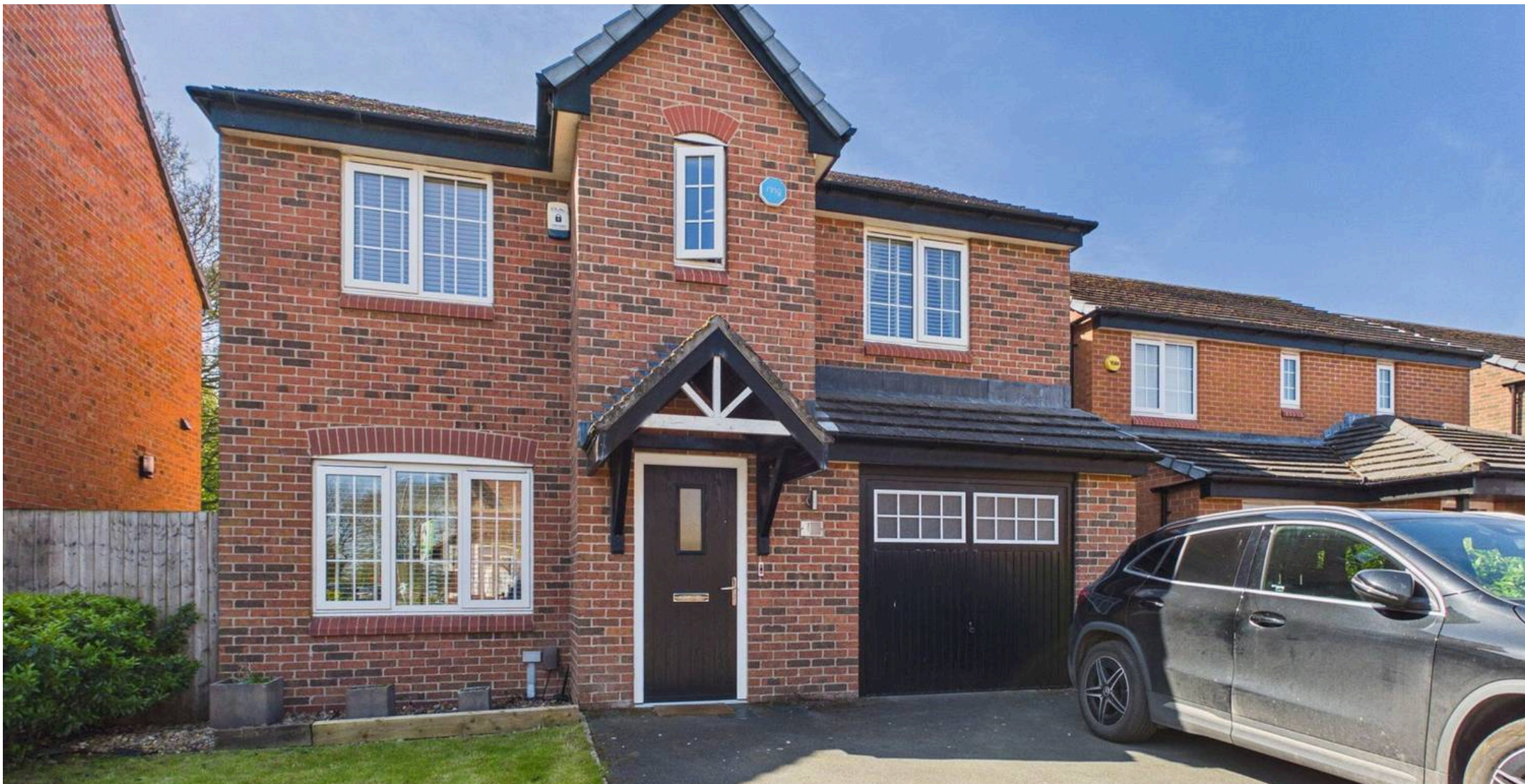
Floor 1



(1) Excluding balconies and terraces

Calculations reference the RICS IPMS 3C standard. Measurements are approximate and not to scale. This floor plan is intended for illustration only.

GIRAFFE 360



## IAN ANTHONY

5 Burscough Street, Ormskirk - L39 2EG

01695580888

[enquiries@iananthonyestates.co.uk](mailto:enquiries@iananthonyestates.co.uk)

[iananthonyestates.co.uk/](http://iananthonyestates.co.uk/)

