



Ferndale Road, London

Asking Price £295,000

A wonderful one bedroom apartment set within the vibrant Brixton area. The property features a spacious double bedroom, a bright open plan kitchen/living space and a three-piece bathroom.

Superbly located, the property is situated only moments from Brixton underground and Brixton train station, boasts easy access into the City. A selection of cafes, shops and restaurants are all a short walk away. The property also has a carpark space in the developments gated parking.

Approx. 102 years remaining on lease
Ground rent amount: £449.23 pa (2025)
Service charge amount: approx. : £2,108.50 pa (2025)
Service charge review period: N/A
Council tax band: B (Lambeth)

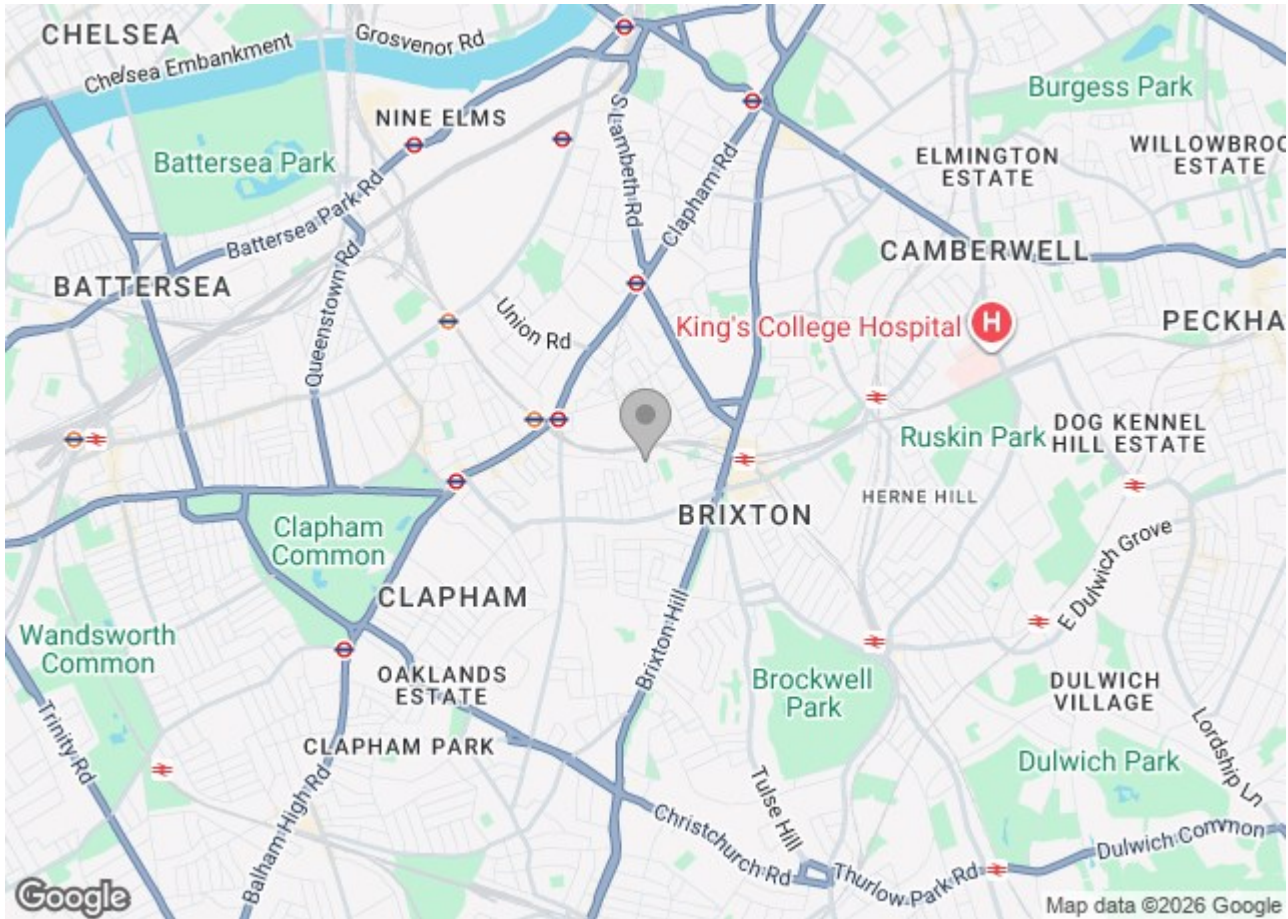
Electricity supply – Mains | Heating – Electric mains | Water supply – Mains | Sewerage – Mains | Internet: Fttc | Parking Included

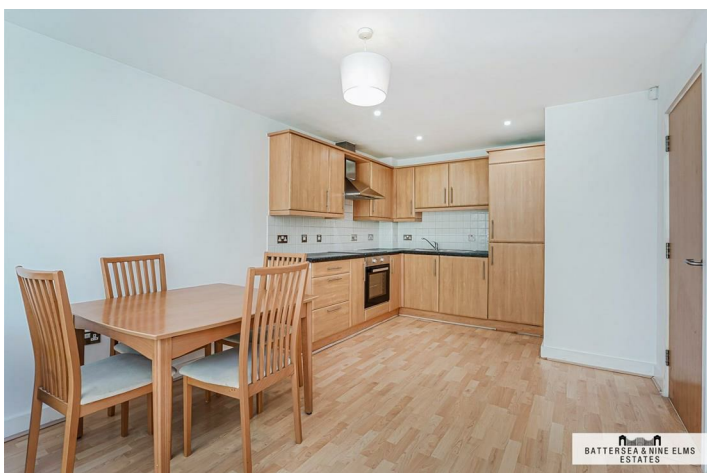
To check broadband and mobile phone coverage please visit Ofcom
To check planning permission please visit Lambeth Council Website, Planning & Building Control

230 Ferndale Road London



- One bedroom apartment
- Excellent transport links
- Off street parking
- Ground floor
- Prime location
- * Photos from 2021

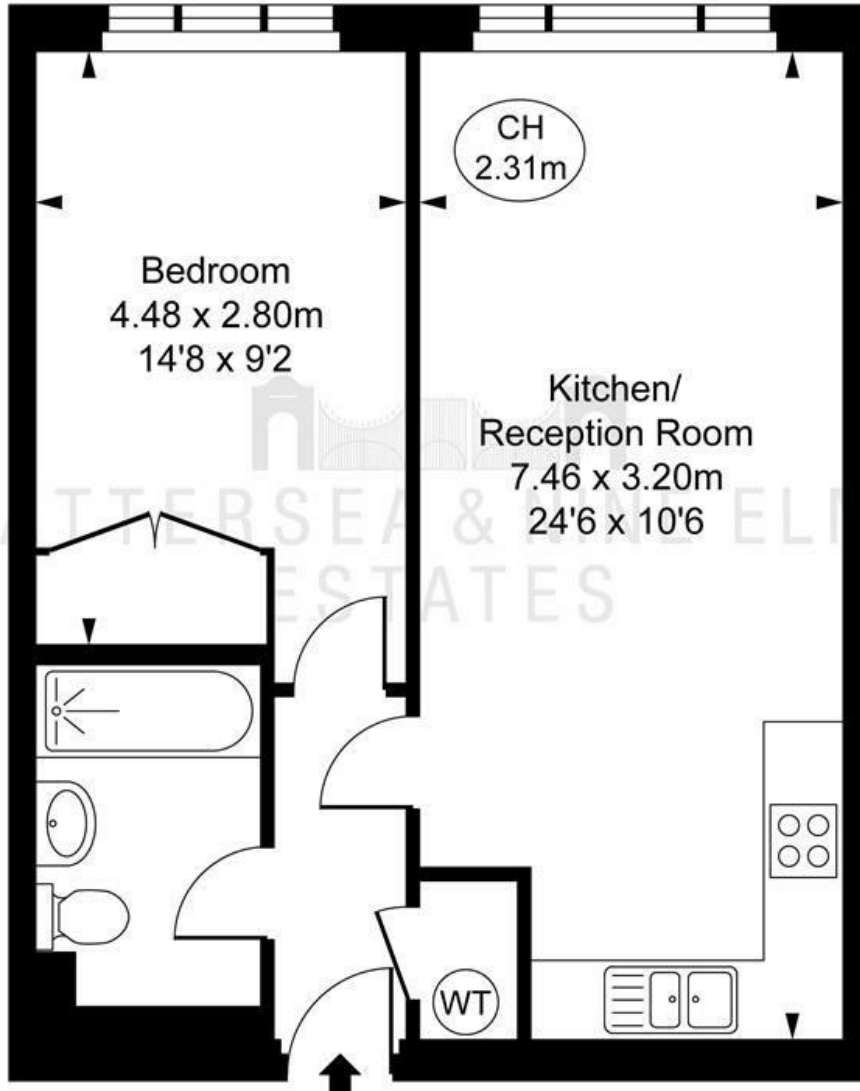




Ferndale Road, SW9
 Approximate Gross Internal Area
 45.16 sq m / 486 sq ft



(CH = Ceiling Heights)



Ground Floor



This plan is not to scale. It is for guidance and not for valuation purposes.
 All measurements and areas are approximate only, and have been prepared in accordance with the current edition of the RICS Code of Measuring Practice.
 © Fulham Performance

These particulars, whilst believed to be accurate are set out as a general outline only for guidance and do not constitute any part of an offer or contract. Intending purchasers should not rely on them as statements of representation of fact, but must satisfy themselves by inspection or otherwise as to their accuracy. No person in this firm's employment has the authority to make or give any representation or warranty in respect of the property.

