

Wade

residential

**Residential Lettings
Property Management Specialists**

PO Box 301, Upminster, RM14 9DQ
01277 523358
enquiries@waderesidential.com
www.waderesidential.com

OLD TOWER BUILDINGS, WAPPING, LONDON, E1W 2NT

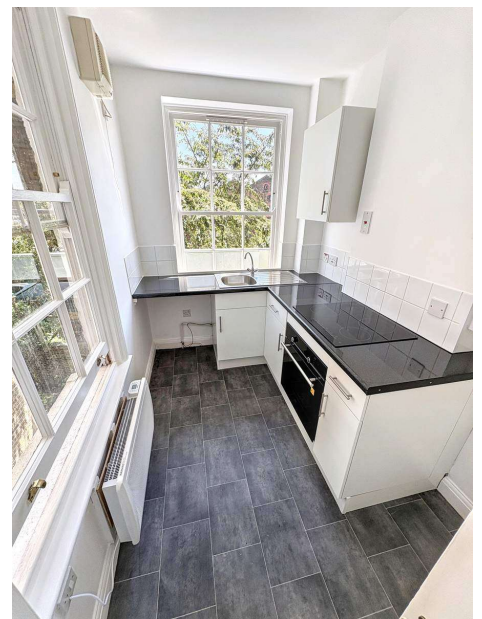


£1,900.00 PCM

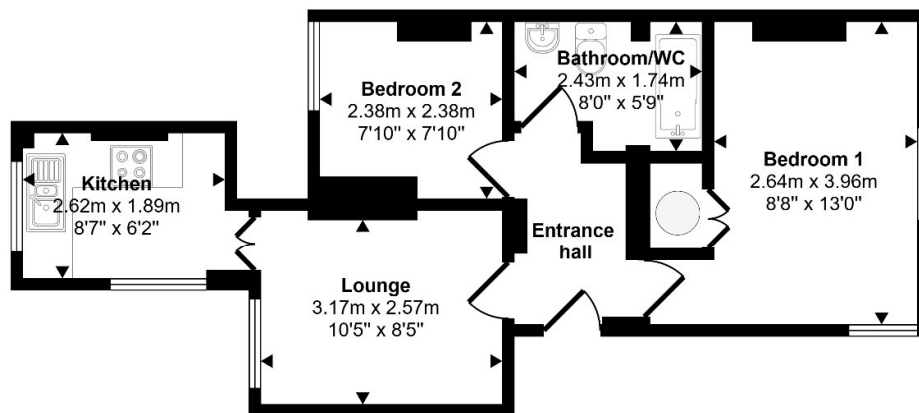
A TWO BEDROOM SECOND FLOOR FLAT. SITUATED IN A PERIOD BUILDING CLOSE TO WAPPING HIGH STREET IN A SOUGHT AFTER LOCATION CLOSE TO THE THAMES AND NOT FAR FROM WAPPING STATION. IDEALLY SUIT A PROFESSIONAL COUPLE OR A SINGLE TENANT. EPC RATING E. COUNCIL TAX BAND A.

- LOUNGE
- FITTED KITCHEN
- BATHROOM/WC
- REDECORATED THROUGHOUT
- ELECTRIC HEATING
- 2ND BEDROOM IDEAL FOR A HOME OFFICE
- CONVENIENT LOCATION
- PERIOD BUILDING
- UNFURNISHED





Approx Gross Internal Area
34 sq m / 370 sq ft



Floorplan

This floorplan is only for illustrative purposes and is not to scale. Measurements of rooms, doors, windows, and any items are approximate and no responsibility is taken for any error, omission or mis-statement. Icons of items such as bathroom suites are representations only and may not look like the real items. Made with Made Snappy 360.