



Connells

Saxon Rise
Irchester Wellingborough



Property Description

*** Situated in the sought after village of Irchester is this two reception, two bedroom semi-detached bungalow with off street parking and front and rear gardens. This property requires some TLC - Call Connells today to arrange your viewing! ***

Entrance Hall

Double glazed door & window to side elevation, radiator.

Lounge

Fireplace and radiator.

Dining Room

Double glazed French doors and window to rear elevation, radiator.

Kitchen

Double glazed window to rear elevation. Fitted with wall and base units with work surfaces over and stainless steel sink drainer with tiling to water sensitive areas.



Bedroom One

Double glazed window to front elevation and radiator.

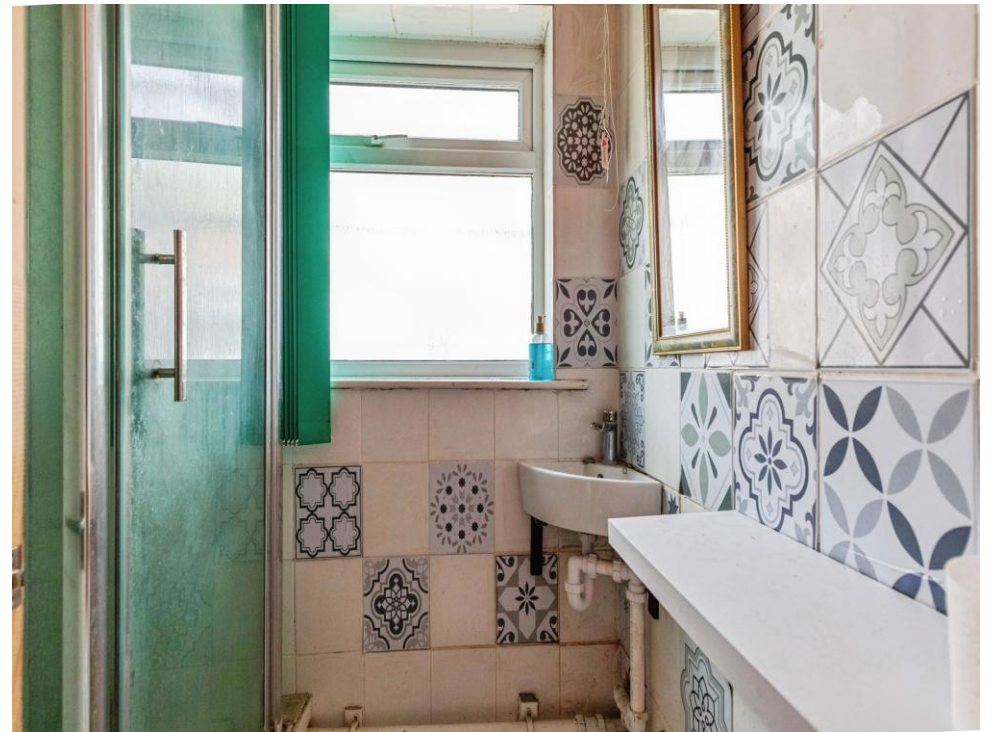
Bedroom Two

Double glazed window to front elevation and radiator.

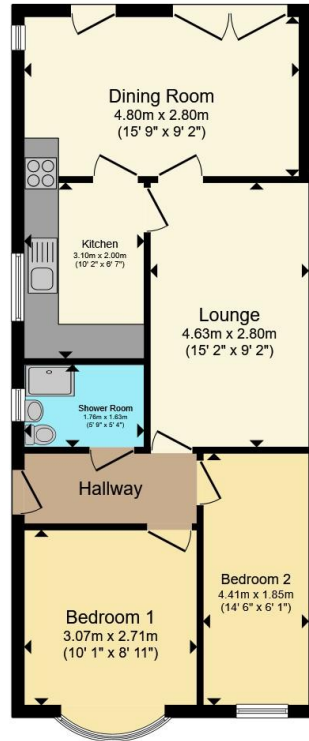
Shower Room

Double glazed window to side elevation. Shower cubicle, low level wc and wash hand basin.









Total floor area 60.1 m² (647 sq.ft.) approx

This floor plan is for illustrative purposes only. It is not drawn to scale. Any measurements, floor areas (including any total floor area), openings and orientation are approximate. No details are guaranteed, they cannot be relied upon for any purpose and they do not form part of any agreement. No liability is taken for any error, omission or misstatement. A party must rely upon its own inspection(s). Powered by www.propertybox.io

Connells

To view this property please contact Connells on

T 01933 312 363
E rushdn@connells.co.uk

66 High Street
RUSHDEN NN10 0PJ

EPC Rating: Council Tax
Awaited Band: A

Tenure: Freehold

view this property online connells.co.uk/Property/RDN406150



1. MONEY LAUNDERING REGULATIONS Intending purchasers will be asked to produce identification documentation at a later stage and we would ask for your co-operation in order that there will be no delay in agreeing the sale. 2. These particulars do not constitute part or all of an offer or contract. 3. The measurements indicated are supplied for guidance only and as such must be considered incorrect. Potential buyers are advised to recheck measurements before committing to any expense. 4. We have not tested any apparatus, equipment, fixtures, fittings or services and it is in the buyers interest to check the working condition of any appliances.

Connells Residential is registered in England and Wales under company number 1489613, Registered Office is Cumbria House, 16-20 Hockliffe Street, Leighton Buzzard, Bedfordshire, LU7 1GN. VAT Registration Number is 500 2481 05.

See all our properties at www.connells.co.uk | www.rightmove.co.uk | www.zoopla.co.uk

Property Ref: RDN406150 - 0002