



65, Woodland View, Shorefield Country Park, Downton, SO41 0LH

£75,000

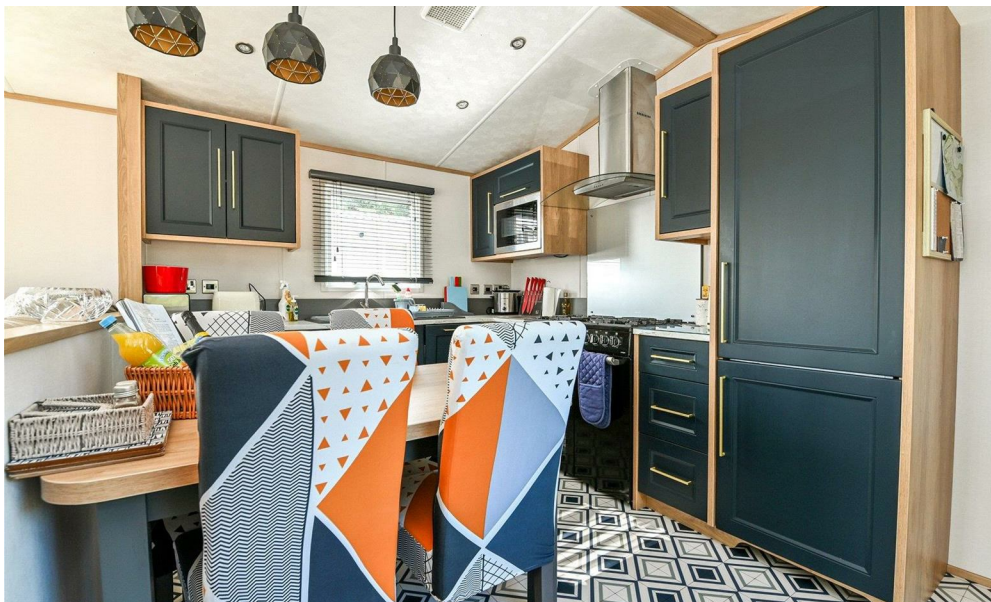
Mitchells
1963 — TODAY



*65 Woodland View
Shorefield Country Park
Downton
Hampshire
SO41 0LH*

An immaculately presented two bedroom holiday home situated in a peaceful location on the popular Woodland View development at Shorefield Country Park. The holiday home benefits from two good sized bedrooms, two shower rooms, a spacious living area, a large deck, and allocated parking.

- Carnaby Chantry Lodge 41x13
- 2026 Site Fees: £7,694.68
- 2026 Rates: £930.32
- License Until: 31/10/2042
- Second Home Only, Cannot Be Main Residence
- Open Plan Kitchen/Living Area
- Two Bedrooms
- Family Shower Room
- En-Suite Shower Room
- Large Area Of Decking



The Property

Entrance hall with a useful storage cupboard.

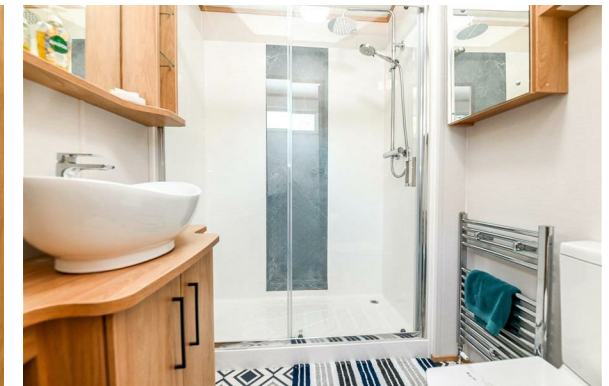
Kitchen/dining room with a four seater dining table and chairs, and a modern kitchen with integrated appliances, including a tall stand-up fridge/freezer, a Cookmaster range style cooker with a five burner gas hob, a dishwasher, an eye level microwave, and a washing machine.

The sitting room enjoys a pleasant double aspect with fitted furniture, a corner sofa with a pull-out bed, and casement doors opening onto the wraparound decking.

Bedroom one is a generous king size room with fitted wardrobes and a door leading to the en-suite shower room with a suite comprising a WC, a wash hand basin with a mixer tap and storage beneath, a shower cubicle, an extractor fan, and a cupboard housing the Valiant central heating boiler.

Bedroom two is a twin bedroom with a built-in wardrobe.

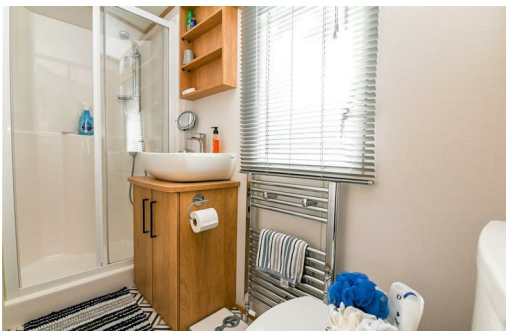
Shower room with tile effect flooring and a suite comprising a large walk-in shower cubicle with a waterfall shower, a wash hand basin with storage beneath, a WC, and a chrome ladder style heated towel rail.





Gardens & Grounds

The holiday home benefits from a large wraparound deck, a storage shed, an area of fenced private lawn, and an allocated parking space.



Site Fees & Charges

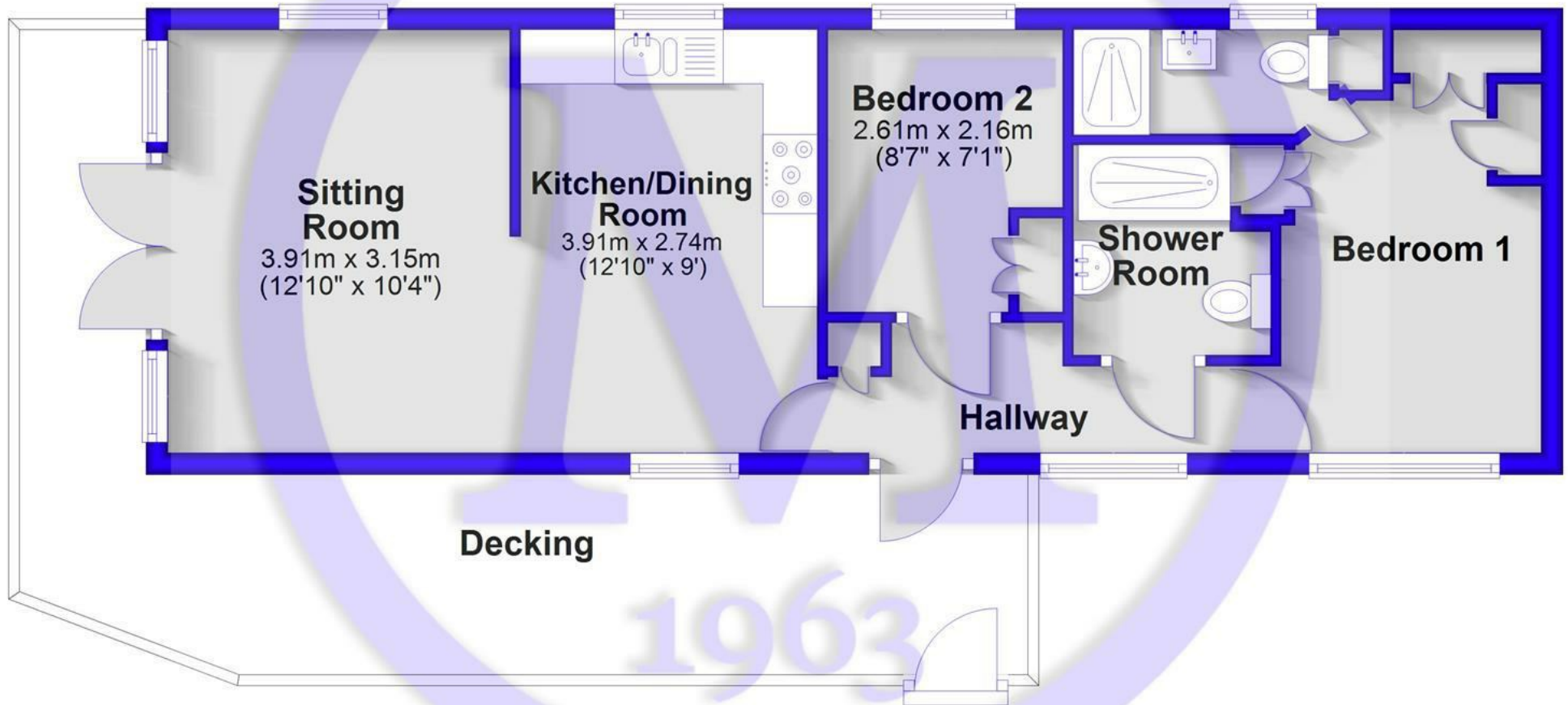
2026 Site Fees: £7,694.68

2026 Rates: £930.32

License Until: 31/10/2042

Floor Plan

Approx. 49.5 sq. metres (532.4 sq. feet)



Total area: approx. 49.5 sq. metres (532.4 sq. feet)

Situation

Located on the southern edge of the New Forest National Park and just a short stroll from the shingle beaches of Milford on Sea, the award-winning Shorefield Country Park offers an idyllic spot for the ultimate getaway. The park boasts a wide range of excellent facilities, including heated indoor and outdoor pools, a gym and day spa, bars, a restaurant, a fishing lake, pet-friendly areas, play areas, tennis courts, and live family entertainment.

At Shorefield Country Park, site fees run from November to October, while the rates are charged from April to March. These fees can be paid either over six or twelve months. Gas and electricity are metered, with bills issued in May and November. The park is open from 10th February to 5th January, providing a fantastic year-round retreat.





Mitchells.uk.com
info@mitchells.uk.com
01425 616411

Centenary Buildings
8-10 Old Milton Road
New Milton
Hampshire
BH25 6DT

Mitchells
1963 — TODAY

