



*jordan fishwick*

Chantry Road Disley Stockport



## Chantry Road Disley Stockport SK12 2DN

£435,000



### The Property

Boasting forward views towards Kinder Scout and occupying an enviable position within an established, sought after development close to Disley Village and amenities, a four bedroom link detached family home. Offered for sale with NO CHAIN. South facing low-maintenance rear garden, double width driveway and integral garage. Pvc double glazing and gas central heating. Comprising: entrance porch, 23ft living room, re-fitting luxury dining kitchen, four first floor bedrooms, an en-suite shower room and a bathroom. Viewing highly recommended.




- Link Detached Family Home
- Sought After Location
- Four Bedrooms
- No Chain
- South Facing Low Maintenance Garden
- Garage and Double Driveway
- Well Presented Throughout
- Re-Fitted Dining Kitchen
- Bathroom AND En-Suite Shower Room
- Viewing Advised

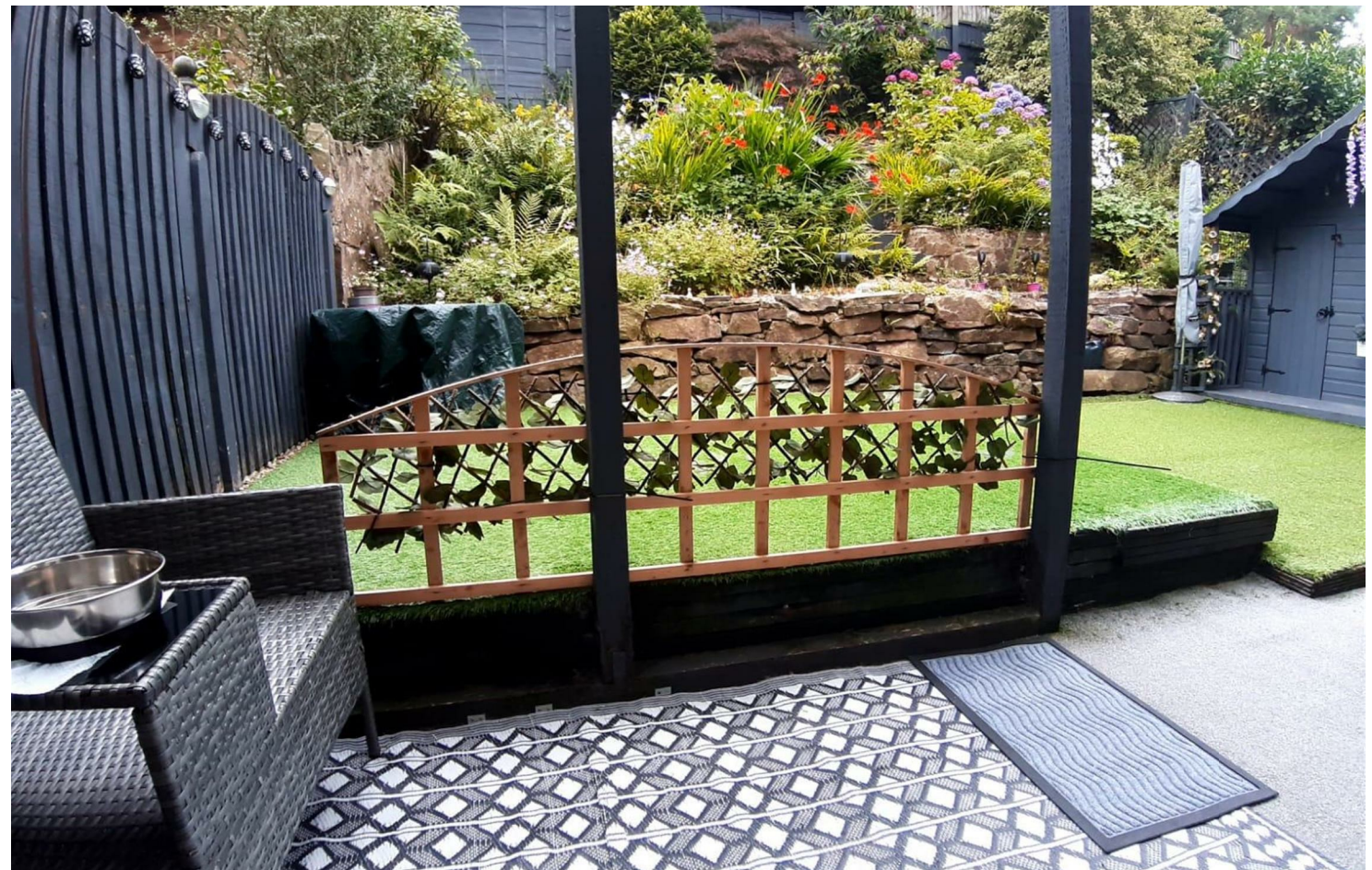
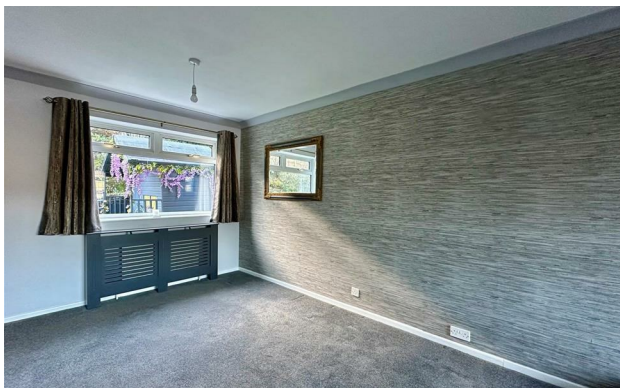
**Postcode** SK12 2DN

**EPC Rating** C

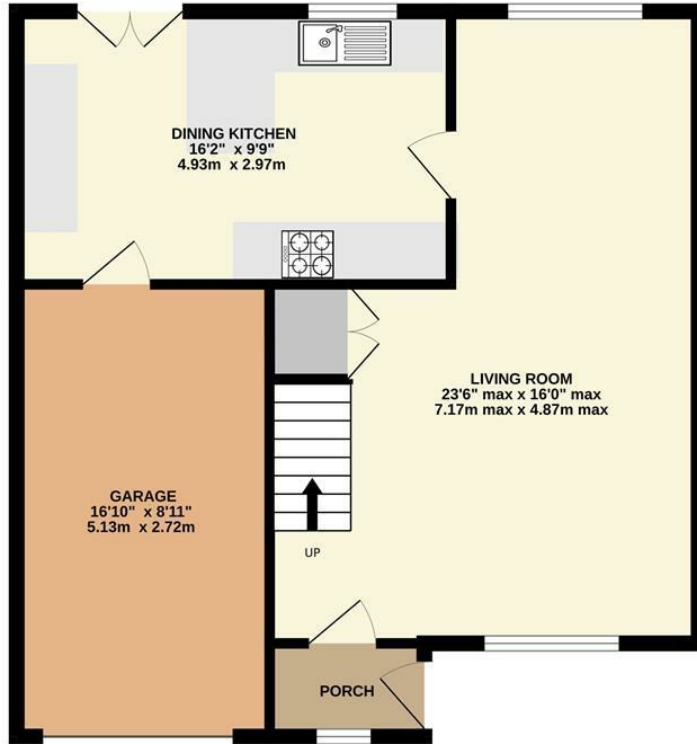
**Local Authority** Cheshire East

**Council Tax** D

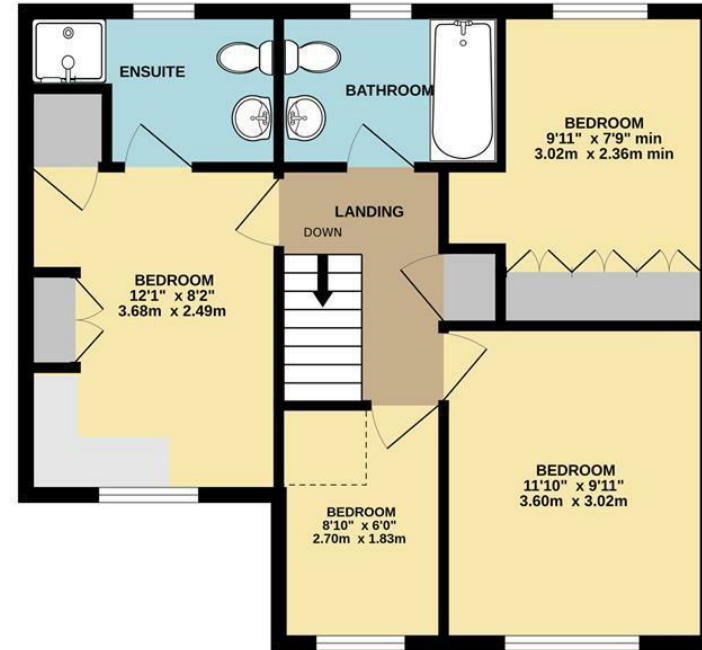
Energy Efficiency Rating		Current	Potential
Very energy efficient - lower running costs			
(92 plus) A			
(81-91) B			
(69-80) C		71	77
(55-68) D			
(39-54) E			
(21-38) F			
(1-20) G			
Not energy efficient - higher running costs			
<b>England &amp; Wales</b>		EU Directive 2002/91/EC 	



GROUND FLOOR



1ST FLOOR



Whilst every attempt has been made to ensure the accuracy of the floorplan contained here, measurements of doors, windows, rooms and any other items are approximate and no responsibility is taken for any error, omission or mis-statement. This plan is for illustrative purposes only and should be used as such by any prospective purchaser. The services, systems and appliances shown have not been tested and no guarantee as to their operability or efficiency can be given.  
Made with Metropix ©2025



These particulars are believed to be accurate but they are not guaranteed and do not form a contract. Neither Jordan Fishwick nor the vendor or lessor accept any responsibility in respect of these particulars, which are not intended to be statements or representations of fact and any intending purchaser or lessee must satisfy himself by inspection or otherwise as to the correctness of each of the statements contained in these particulars. Any floorplans on this brochure are for illustrative purposes only and are not necessarily to scale.

Offices at: Chorlton, Didsbury, Disley, Hale, Glossop, Macclesfield, Manchester Deansgate, Manchester Whitworth Street, New Mills, Sale, Wilmslow and Withington

14 Market St, Disley, Cheshire, Stockport SK12 2AA

01663 767878

disley@jordanfishwick.co.uk

www.jordanfishwick.co.uk