



ARTILLERY PLACE, SE18

£2,300 per month

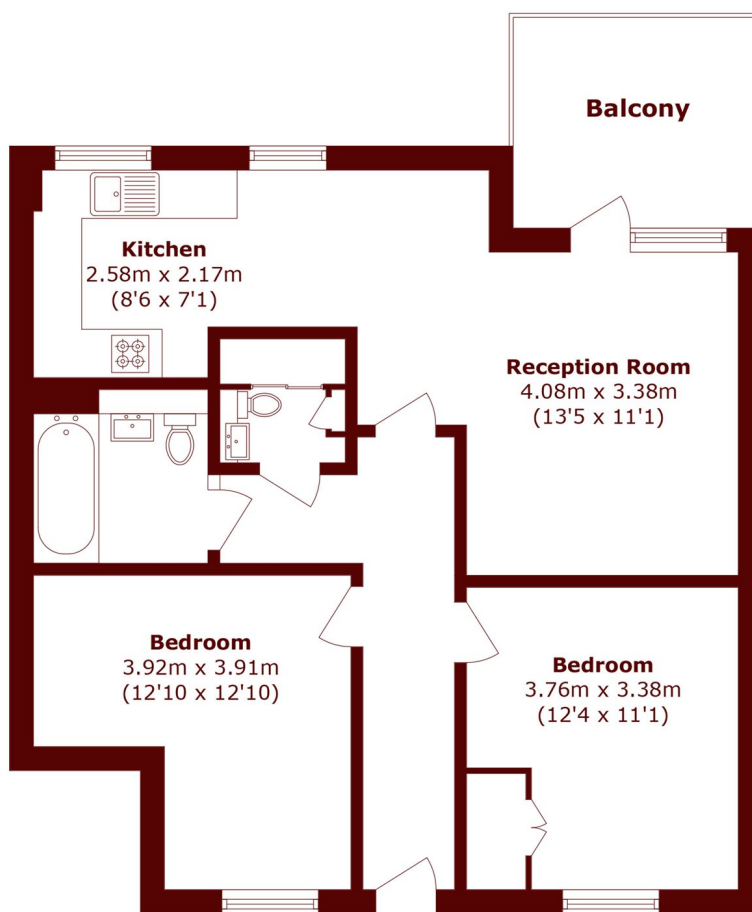
Modern top floor apartment with views over the Royal Army Barracks and Shooters Hill. Features two double bedrooms, a bathroom with shower, separate WC, and an open plan kitchen/reception with a south

Top Floor Apartment	Two Bathrooms
Open Plan Living/Dining Room	Private Balcony
Two Double Bedrooms	Energy rating: B

@marshandparsons
marshandparsons.co.uk

MARSH &
PARSONS

STEP INSIDE ARTILLERY PLACE



Total area (approx.): 72.4 sq. m (779.3 sq. ft)
Balcony area (approx.): 7.0 sq. m (75.3 sq. ft)

Charlton
020 8296 1628

Energy Rating: B We aim to make our particulars both accurate and reliable. However, they are not guaranteed; nor do they form part of an offer or contract. If you require clarification on any points then please contact us, especially if you're traveling some distance to view. Please note that appliances and heating systems have not been tested and therefore no warranties can be given as to their good working order

MARSH &
PARSONS