



WIMBLEDON HILL ROAD, SW19

£2,500 PCM

- Open-Plan Kitchen/Living Area
- Two Double Bedrooms
- Private Balcony
- Recently Refurbished
- Prime Location in Wimbledon
- Private Balcony





## ABOUT THE HOME

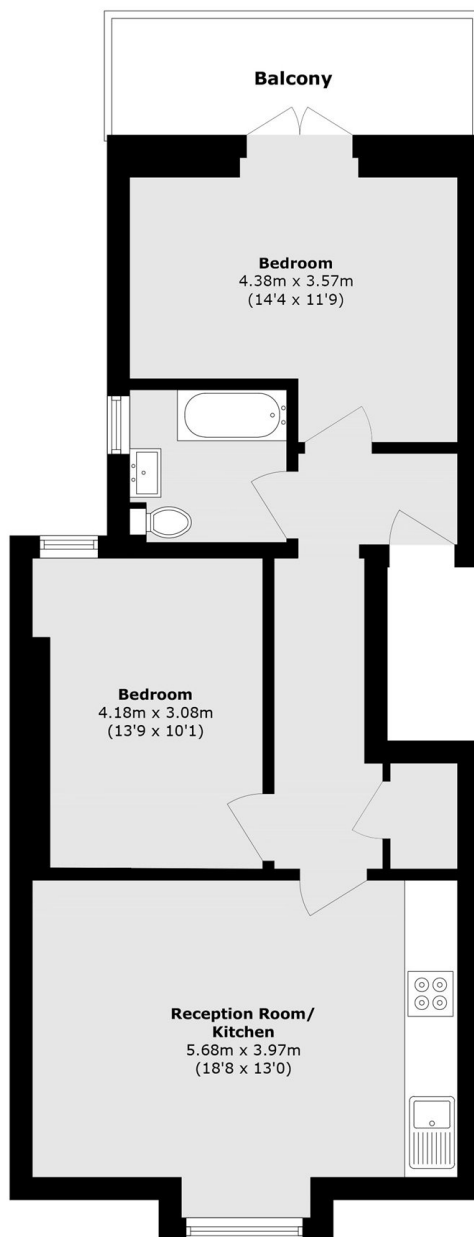
This is a newly refurbished two bedroom property. The property features a modern open-plan kitchen/living area, contemporary bathroom and a private balcony.

Located in the heart of Wimbledon within close proximity to the station and the local amenities of Wimbledon.









Total area (approx.): 66.9 sq. m (720.1 sq. ft)

Balcony area (approx.): 7.5 sq. m (80.73 sq. ft)

#### JACKSONS EARLSFIELD

372-374 Garratt Lane,  
Earlsfield, London, SW18 4ES  
Sales: 020 8971 7979  
Lettings: 020 8971 7070

Energy Rating: We aim to make our particulars both accurate and reliable. However they are not guaranteed; nor do they form part of an offer or contract. If you require clarification on any points then please contact us, especially if you're traveling some distance to view. Please note that appliances and heating systems have not been tested and therefore no warranties can be given as to their good working order.