



Messina Avenue, NW6

£320 Per week

An excellently presented studio apartment with a communal roof terrace. The property features a spacious open plan kitchen and living room and modern private bathroom. The sofa converts into a large double bed and the apartment is offered fully furnished.

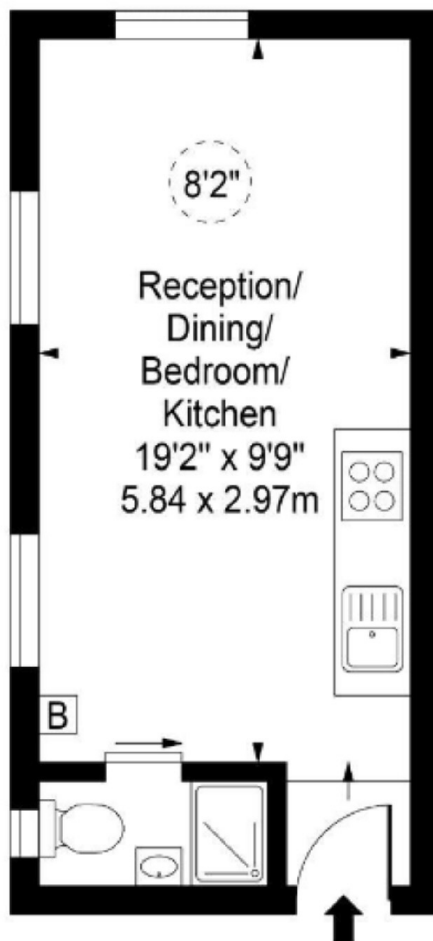
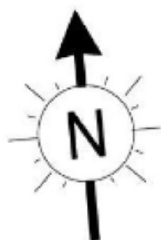
Located on the West Hampstead side of Messina Avenue close to the local public transport. Around the corner is Grange Park and the highly rated Bombay Flame Indian restaurant.


Features

- Large Studio
- Communal Balcony
- Private Bathroom
- Wooden Flooring
- Close to Amenities
- Great Location

Messina Avenue,
London, NW6

Messina Avenue, West Hampstead, NW6



 - Ceiling Height

Half Landing
Between
Ground & First Floor

Approx Gross Internal Area **216 Sq Ft - 20.06 Sq M**

Dexters

West Hampstead Lettings
106 West End Lane
London
NW6 2LS
Lettings
020 7644 9301

Energy Rating: D. We aim to make our particulars both accurate and reliable. However they are not guaranteed; nor do they form part of an offer or contract. If you require clarification on any points then please contact us, especially if you're traveling some distance to view. Please note that appliances and heating systems have not been tested and therefore no warranties can be given as to their good working order.

 **RICS** | Regulated
Estate Agent
and Letting Agent

dexters.co.uk