

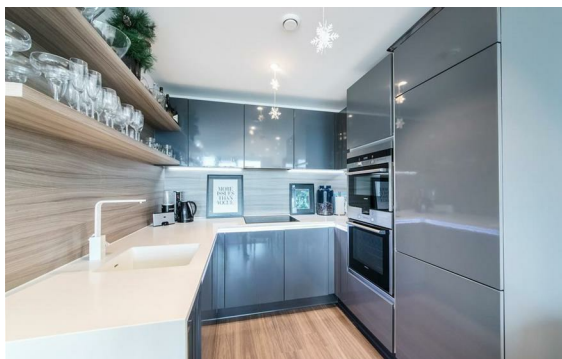


[Harrington Street, Camden, London, NW1](#)

Rent £750 PCM

1 Bed | 1 Bath | 1 Reception

*Please call us on 020 7724 2233 or email us [info@newingtonstates.com](mailto:info@newingtonstates.com) to book a viewing.*



60 Upper Montagu Street

London

W1H 1SN

020 7724 2233

[info@newingtonestates.com](mailto:info@newingtonestates.com)

A bright and spacious one-bedroom apartment offering modern interiors and well-balanced living space within a sought-after development. Positioned on the upper floor with lift access, the property features an open-plan kitchen and reception room with wood flooring and direct access to a private balcony. The double bedroom is well proportioned and also benefits from balcony access, complemented by a stylish modern bathroom. Large windows throughout create a bright and airy atmosphere.

Ideally located close to Euston Station, Mornington Crescent Station, and within easy reach of Regent's Park, Camden, and the West End.

EPC Rating: B

## Energy Efficiency Rating: B

Agents Note: Whilst every care has been taken to prepare these particulars, they are for guidance purposes only. All measurements are approximate and are for general guidance purposes only and whilst every care has been taken to ensure their accuracy, they should not be relied upon and potential buyers/tenants are advised to recheck the measurements.

<http://www.newingtonestates.com>