

CHARMILL

RESIDENTIAL

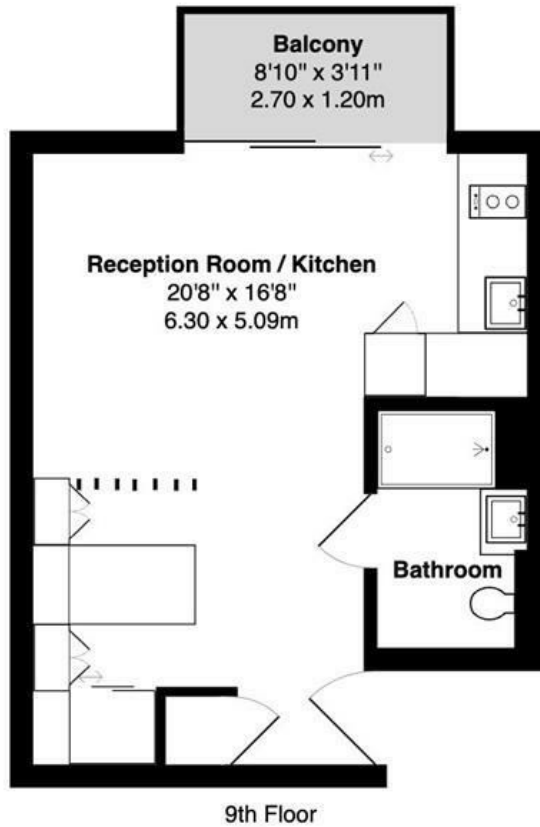


Pan Peninsula Square, Canary Wharf, E14

A spacious studio apartment arranged on the sixteenth floor of an extremely well-equipped purpose-built development in Canary Wharf. The apartment comprises of a large studio room with separate sleeping area, living area with open plan kitchen, shower room and a private balcony. The development further benefits from 24-hour porter, gym and wellness center, indoor swimming pool and a private cinema room. The apartment is walking distance to Canary Wharf underground station (Jubilee Line) and the DLR.

- Studio apartment
- 24 hour porter
- Leisure facilities
- Balcony
- Shower Room

£425



9th Floor

Pan Peninsula Square E14

Total Gross Area: 323 ft² ... 30.0 m² (excluding balcony)

Floor plans are for identification and guideline purposes only, not to scale
Compliant RICS code of measuring practice

Energy Efficiency Rating		Current	Potential
Very energy efficient - lower running costs			
(92 plus) A			
(81-91) B			
(69-80) C			
(55-68) D			
(39-54) E			
(21-38) F			
(1-20) G			
Not energy efficient - higher running costs			
England & Wales	EU Directive 2002/91/EC	82	82

Environmental Impact (CO ₂) Rating		Current	Potential
Very environmentally friendly - lower CO ₂ emissions			
(92 plus) A			
(81-91) B			
(69-80) C			
(55-68) D			
(39-54) E			
(21-38) F			
(1-20) G			
Not environmentally friendly - higher CO ₂ emissions			
England & Wales	EU Directive 2002/91/EC		

