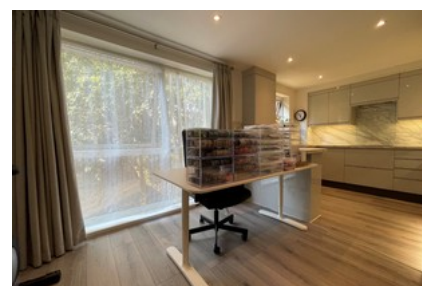




Laleham Road Shepperton



- ✓ Two Bedroom Apartment
- ✓ Open Plan Reception/kitchen
- ✓ Storage Unit
- ✓ Walking Distance To Br & High Street
- ✓ Residents Parking

- ✓ Beautifully Presented Throughout
- ✓ Offered Unfurnished
- ✓ Available April
- ✓ Council Tax Band C
- ✓ Epc Rating B

£1,375 PCM

Bedroom  2 Bathroom  1 Reception  1