



Moreton Place

Harpenden, AL5 2UF

Detached four bedroom home of over 1,520 sq ft in a quiet cul-de-sac, ideally located for excellent schooling and within walking distance of the town centre and station. Benefiting from a private rear garden, driveway and garage. Sitting on a south west facing 0.3 acre plot, this house has planning approved for further extension and renovation ref: 5/2023/2390

Guide price £1,600,000

Moreton Place

Harpenden, AL5 2UF



- Detached House
- Over 1,520 sq ft
- Close to excellent schooling
- Four Bedrooms
- Private driveway & garage
- Planning Approved Ref: 5/2023/2390
- Quiet cul-de-sac
- South west facing 0.3 Acre Plot
- Council Tax Band G

Porch

En-suite Shower

Entrance Hall

Bedroom Two

12'3" x 10'6" (3.74m x 3.22m)

Cloakroom

Bedroom Three

14'2" x 7'8" (4.33m x 2.35m)

Kitchen/Dining/Family Room

28'4" x 13'9" max (8.66m x 4.21m max)

Bedroom Four

14'2" x 7'8" (4.33m x 2.35m)

Utility Room

8'6" x 5'10" (2.61m x 1.78m)

Bathroom

Living Room

16'10" x 11'3" (5.15m x 3.44m)

Garage

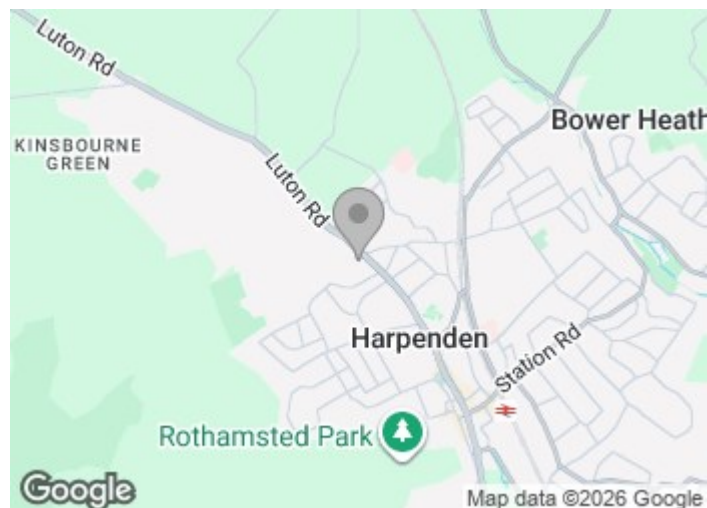
31'11" x 11'8" (9.73m x 3.58m)

Study

6'1" x 3'9" (1.87m x 1.15m)

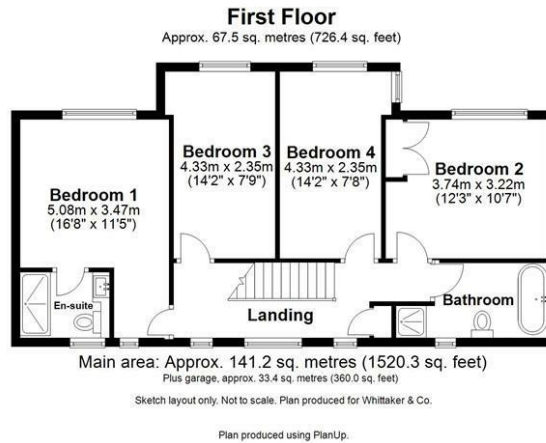
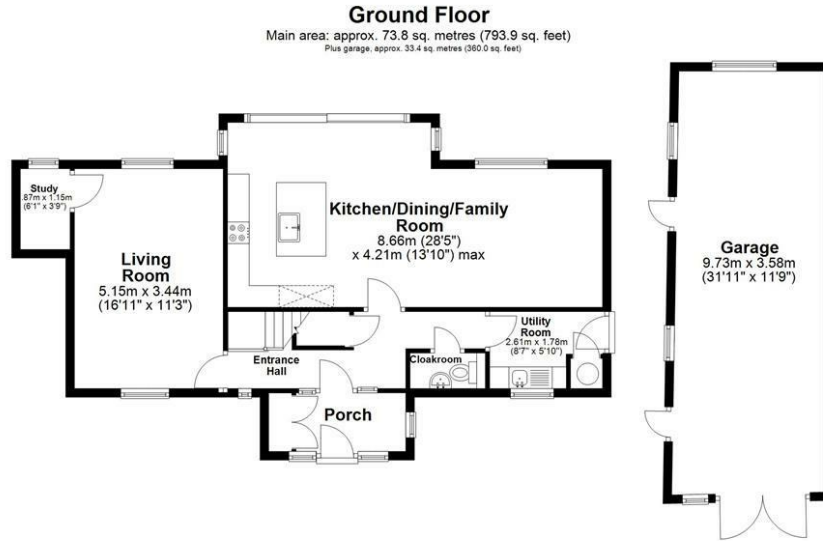
Bedroom One

16'7" x 11'4" (5.08m x 3.47m)





Floor Plan



These particulars, whilst believed to be accurate are set out as a general outline only for guidance and do not constitute any part of an offer or contract. Intending purchasers should not rely on them as statements of representation of fact, but must satisfy themselves by inspection or otherwise as to their accuracy. No person in this firm's employment has the authority to make or give any representation or warranty in respect of the property.

