



20 Beaconsfield Road, London, SE9 4DP

£685,000

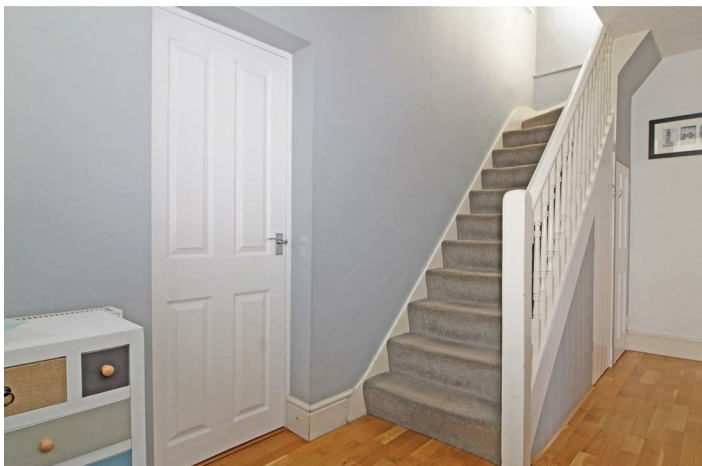
- Six Bedrooms
- Delightful Rear Garden
- Popular Location
- Utility Room
- Semi Detached House
- EPC Rating D

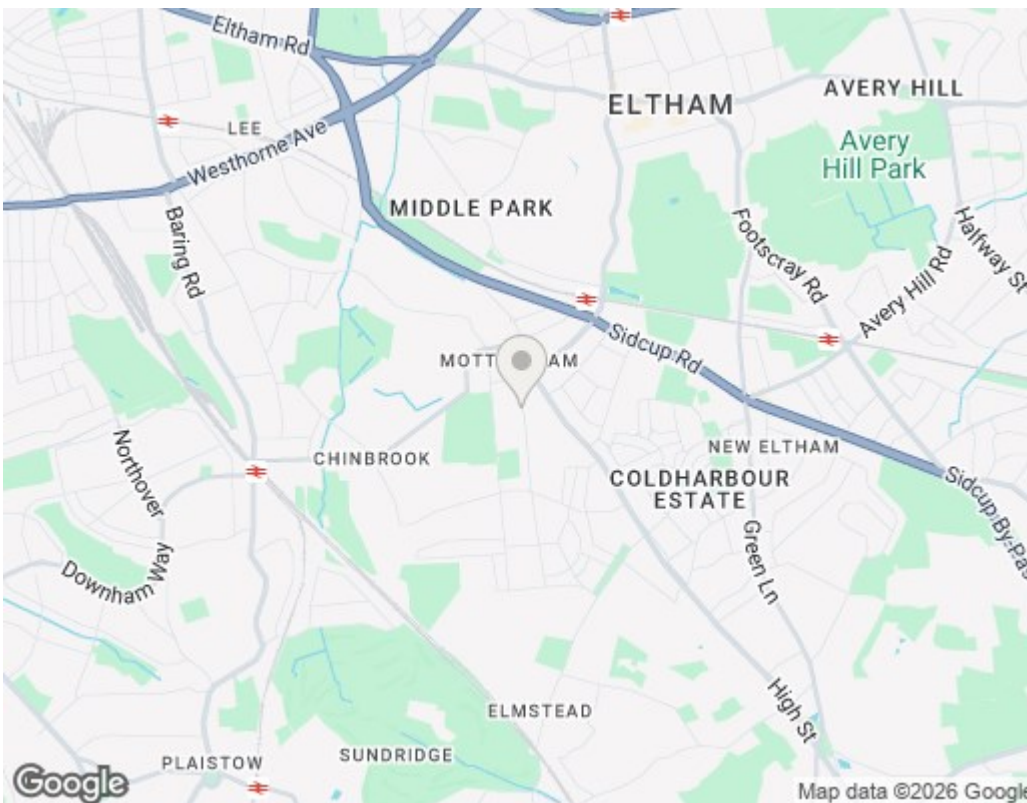
# 20 Beaconsfield Road, London SE9 4DP

Introducing a rare opportunity to acquire a SIX BEDROOM SEMI DETACHED HOUSE located in the ever popular Mottingham Village. The deceptively spacious accommodation comprises of a reception room, 19' kitchen/diner, separate utility room and the original garage has been converted into a further bedroom/study. The first floor has three bedrooms, plus a family bathroom. The loft space has been converted to now include two bedrooms, plus a separate shower room. At the rear you will find a delightful garden and off street parking to the front. A fantastic family home that deserves an internal inspection.



Council Tax Band: E





## Viewings

Viewings by arrangement only.  
Call 0208 859 1100 to make an appointment.

## EPC Rating:

D

