

Sanderstead Road, E10

£3,300 Per calendar month

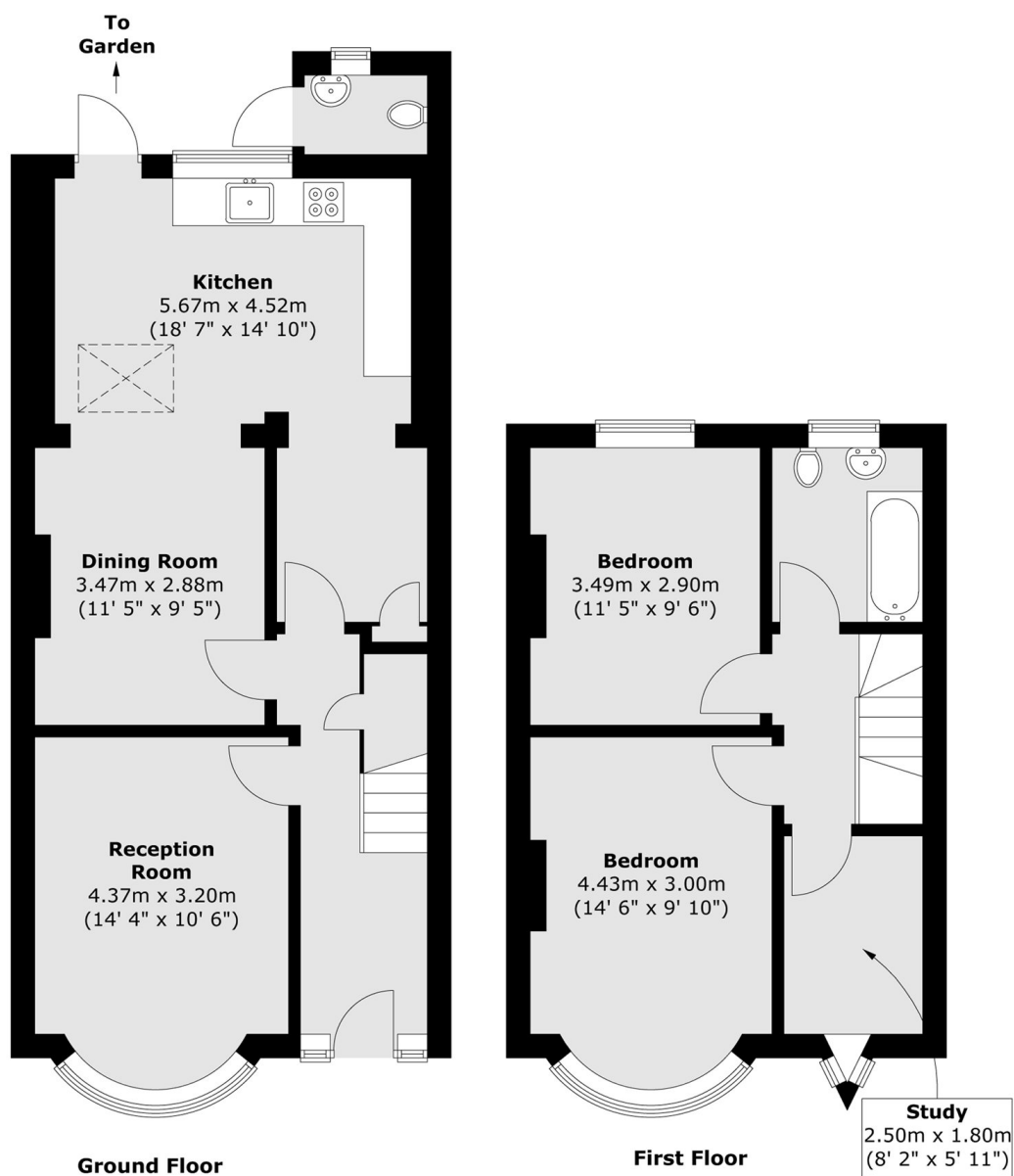
A recently refurbished modern house situated in Sanderstead Road, a short walking distance to Lea Bridge Road station. This exceptionally designed contemporary home has a bright reception room with separate fully integrated kitchen with white goods included. Offers excellent space with three double bedrooms, family bathroom and downstairs WC. And a great size rear garden.

The property is ideally located in the highly sought after area of Leyton. Residents can enjoy a huge selection of local pubs, shops, cafe's and restaurants. A short walking distance to overground and overground station Lea Bridge Road.

Features

Three Double Bedrooms
Family Bathrooms
Perfect for Sharers
Ideal Location
Modern Throughout
Refurbished

Sanderstead Road, London, E10



Total area (approx.) : 91.2 sq. m (982 sq. ft)
Total w.c area (approx.) : 1.5 sq. m (16 sq. ft)