



Longridge Road
Earls Court, SW5

CHESTERTONS





A well-presented grand one double bedroom apartment located on the first floor of an elegant period building.

This bright and spacious flat offers a superb blend of period charm and contemporary style and comprises a generously sized reception room with 3.4m ceilings, fireplace and access to a front balcony and a smart modern kitchen. To the rear of the property, the principal bedroom is quietly positioned and features excellent built-in storage along with access to a west-facing balcony. A modern, well-appointed bathroom completes the accommodation.

Situated on a peaceful residential street, the property is just a short walk from a wide array of local shops, cafés, restaurants, and the underground station, providing convenient access across London. Offered with a share of freehold, this is an outstanding opportunity to acquire a stylish and spacious home in a prime central location.

Asking Price £650,000

Energy Efficiency Rating		Current	Potential
100-90	A		
81-90	B		
69-80	C		
55-65	D	65	70
39-54	E		
21-38	F		
1-20	G		

Not energy efficient - higher running costs

EU Directive 2002/91/EC

England, Scotland & Wales

Tenure: Share of Freehold 979 years remaining
Service Charge: £3,500 p.a. (Includes reserve fund contribution)
Ground Rent: Peppercorn
Local Authority: Kensington and Chelsea
Council Tax Band: F

Chestertons South Kensington Sales

44-48 Old Brompton Road
 London
 SW7 3DY

southkensington@chestertons.co.uk

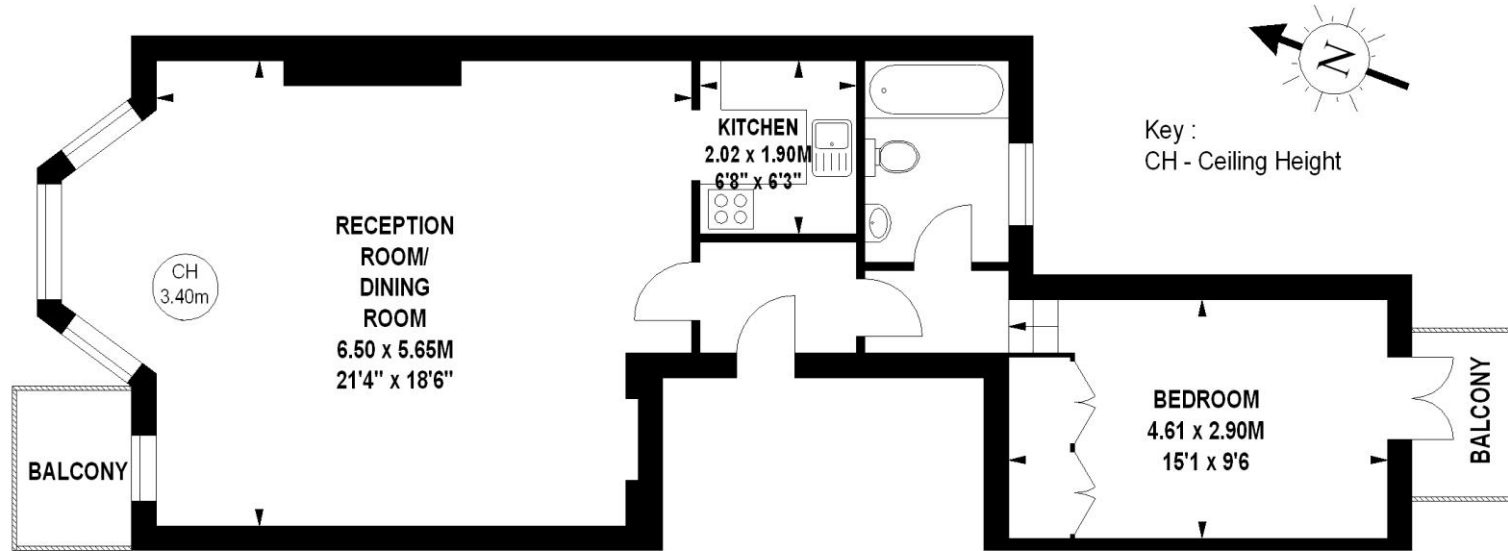
020 7589 1234

chestertons.co.uk

Longridge Road, SW5

Approximate gross internal area

699 sq ft / 64.94 sq m



First Floor

The floor plan is not to scale and measurements and areas shown are approximate and therefore should be used for illustrative purposes only.

The plan has been prepared in accordance with the RICS code of Measuring Practice and whilst we have confidence in the information produced, it must not be relied on.

If there is any aspect of particular importance, you should carry out or commission your own inspection of the property.

Copyright of FeaturePRO.

