



- TWO Bedroom Apartment
- Ensuite Bathroom with shower
- Top Floor
- Walking Distance To Ickenham Village
- Available February 2026

- Modern Development
- Private Balcony
- Allocated Parking
- Close To Transport Links
- EPC Rating B

A very well presented top-floor TWO-bedroom TWO-bathroom modern apartment set close to Ickenham Village and West Ruislip Station (Central Line).

The property comprises; entrance hall way with storage cupboards, main bedroom with ensuite shower room, second double bedroom, main bathroom, spacious lounge, kitchen with integrated appliances.

Further benefits include; neutral decor, lift access, allocated parking space, district heating, private balcony.

Ideally situated in Ickenham, with residents enjoying the added benefit of close proximity to West Ruislip (Central Line) and Ickenham (Metropolitan & Piccadilly Lines) underground stations, enabling seamless commuting. Furthermore, the A40/M40/M25 motorways are easily accessible, allowing for effortless travel by car.

Available February 2026 furnished.

Rent: £1,950 PCM

Deposit: £2,250 (5 weeks' rent)

Holding deposit: 1 week's rent £450 (which will be used towards the remaining move-in money due)

Length of tenancy: Minimum 12 months

Local authority: Hillingdon Council

Council tax band: D

Internet Speed: Download - (up to) 1,800 Mbps Upload - (up to) 900 Mbps

Mobile Coverage (Indoor):

EE - Good

Three - Good

O2 - None

Vodafone - Good

\*Please note all dimensions and descriptions are to be used as a guide only by any prospective tenant and do not constitute representations of fact or form part of any offer or contract. Internet Speed and Mobile Coverage figures are based on estimates provided by Ofcom at <https://checker.ofcom.org/>





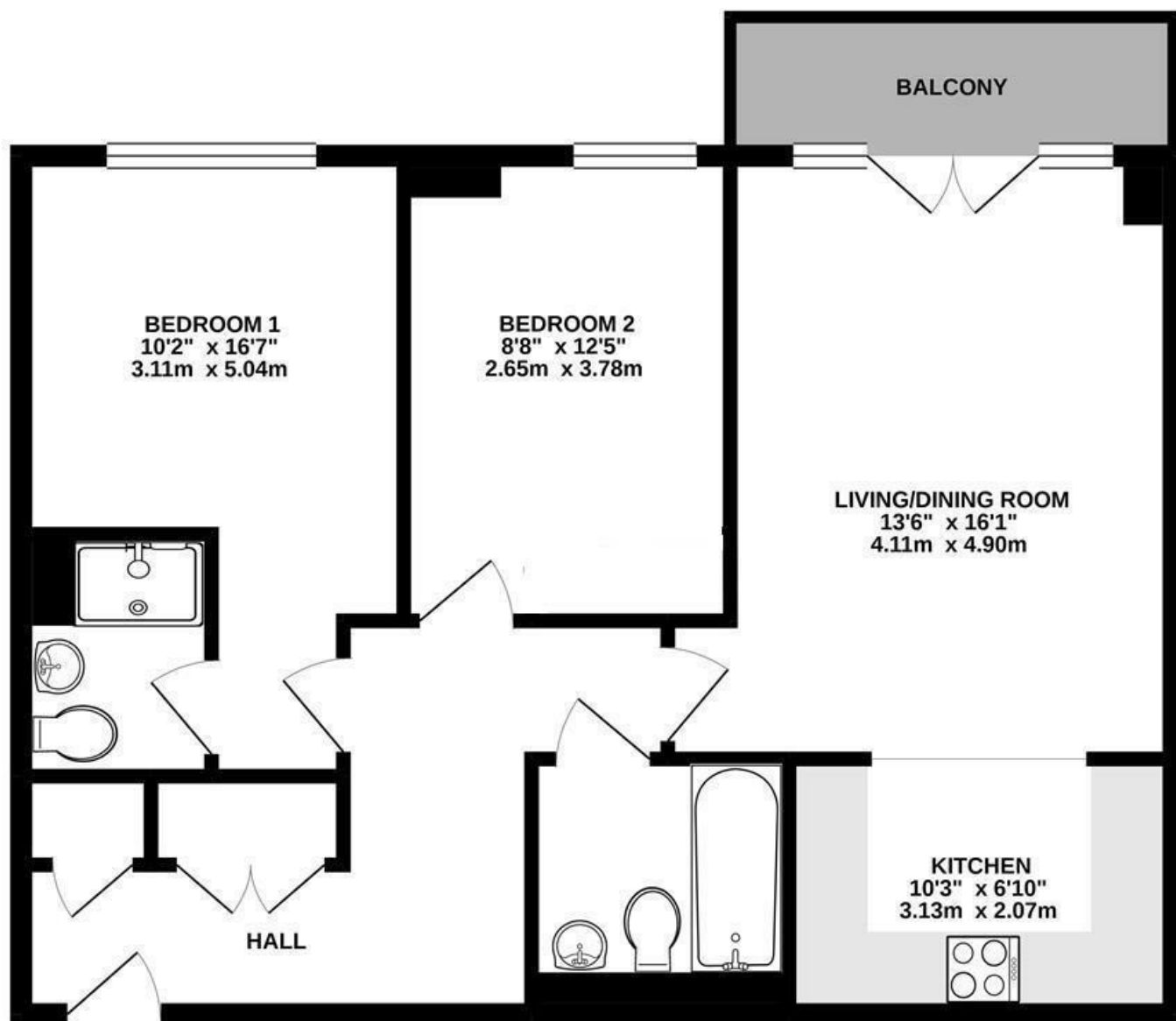




Energy Efficiency Rating		
	Current	Potential
Very energy efficient - lower running costs		
(92 plus) A		
(81-91) B		
(69-80) C		
(55-68) D		
(39-54) E		
(21-38) F		
(1-20) G		
Not energy efficient - higher running costs		
England & Wales	EU Directive 2002/91/EC	

Environmental Impact (CO <sub>2</sub> ) Rating		
	Current	Potential
Very environmentally friendly - lower CO <sub>2</sub> emissions		
(92 plus) A		
(81-91) B		
(69-80) C		
(55-68) D		
(39-54) E		
(21-38) F		
(1-20) G		
Not environmentally friendly - higher CO <sub>2</sub> emissions		
England & Wales	EU Directive 2002/91/EC	

691 sq.ft. (64.2 sq.m.) approx.

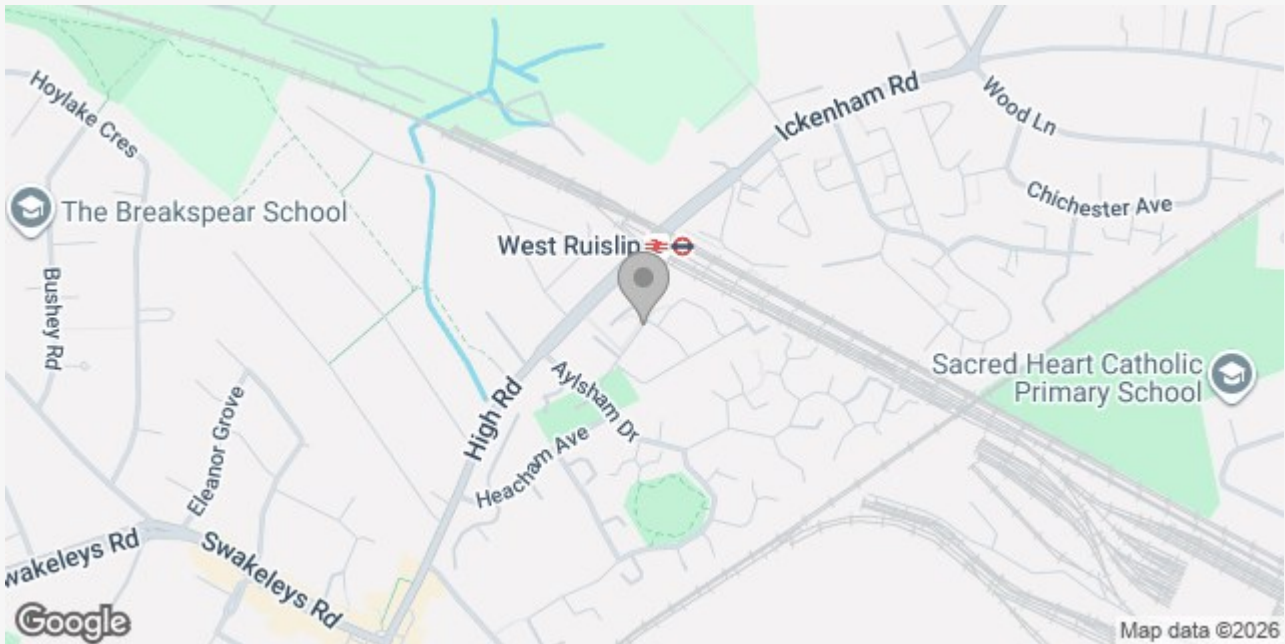


TOTAL FLOOR AREA: 691 sq.ft. (64.2 sq.m.) approx.

Whilst every attempt has been made to ensure the accuracy of the floorplan contained here, measurements of doors, windows, rooms and any other items are approximate and no responsibility is taken for any error, omission or mis-statement. This plan is for illustrative purposes only and should be used as such by any prospective purchaser. The services, systems and appliances shown have not been tested and no guarantee as to their operability or efficiency can be given.  
Made with Metropix ©2020

These particulars do not form part of any offer or contract and must not be relied upon as statements or representations of fact. Any areas, measurements or distances are approximate. The text, photographs and plans are for guidance only and are not necessarily comprehensive. It should not be assumed that the property has all the necessary planning, building regulation or other consents and we have not tested services, equipment or facilities. Purchasers must satisfy themselves by inspection or otherwise.





## LAKIN & CO – YOUR LOCAL ESTATE AGENT

We are an independent Estate Agent, providing residential sales, lettings, property management, block management and financial services primarily throughout Uxbridge, Hillingdon, Ickenham and Ruislip areas.

Dealing with thousands of landlords, tenants, vendors and buyers throughout our core areas, we are renowned for providing a dedicated and attentive service to all of our clients. Our excellent reviews, ratings and membership to the Association of Residential Lettings (ARLA) and The Property Ombudsman (TPO) is testimony to our excellent service.

We take great pride in being known for our honesty and consistent hard work, so whether you are selling or letting your property or looking to find your ideal home please contact us now and let us assist you further.