



Slipshatch Road, Reigate, Surrey, RH2

Reigate - Offers Over £260,000

ROSS MARGETTS
exp

Slipshatch Road places you within easy reach of shops, cafés and everyday essentials, while still offering your own private outdoor space to come home to. No lift. No long corridors. Just a straightforward, well arranged ground floor home with a garden.

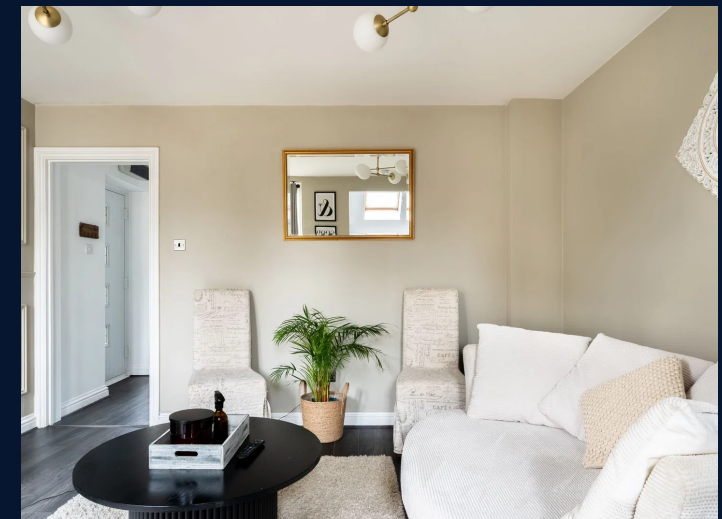
The living room is well proportioned, giving genuine room for both seating and dining. French doors open directly onto the private garden, allowing the space to flow naturally in warmer months.

The kitchen sits separately, with modern cabinetry and a skylight above, drawing in additional natural light. Compact, but practical and thoughtfully arranged.

The bedroom measures over 14 ft in length, comfortably accommodating a double bed alongside wardrobes and desk space for those working from home. The bathroom is clean, contemporary and finished in white with a shower over bath.

Outside, the private garden offers low maintenance outdoor living. Space for seating. Space for planters. Enough privacy to enjoy without the upkeep that comes with a larger plot.

There is also a separate external store, ideal for bikes, luggage or additional storage, it also benefits from electricity so it could potentially be converted to an office, crafts room or studio.





Bedrooms: 1 | Bathrooms: 1 | Receptions: 1

REF RM1298 - Chain Free - Private Parking, Private Garden. Ground Floor Maisonette.

Guide Price £260,000 - £270,000

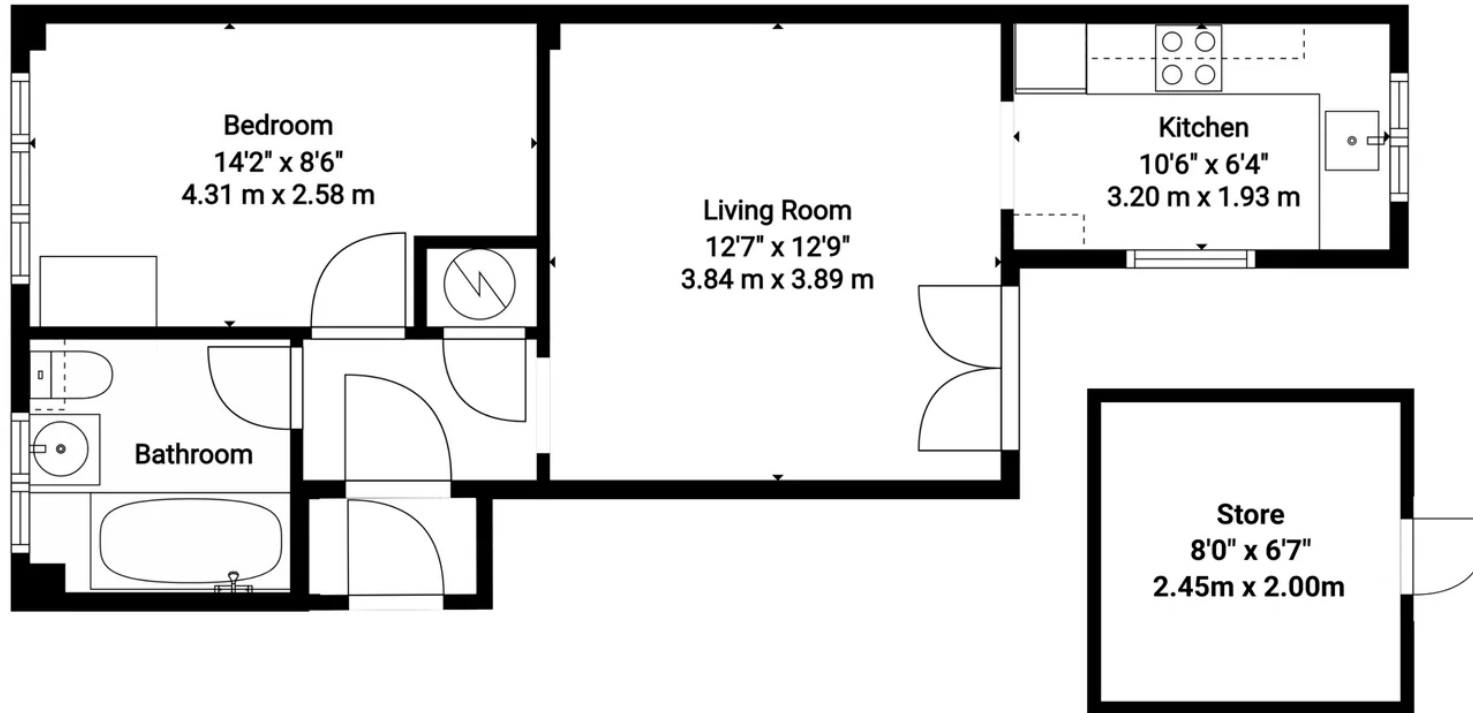
Because of its position, layout and ground floor access, this home will suit:

- First Time Buyers Wanting Independence And Outside Space
- Professional Buyers Seeking A Low Maintenance Base In South Reigate
- Downsizers Looking For Ground Floor Living Without Giving Up A Garden
- Investors Targeting A Well Connected Rental Location



SLIPSHATCH ROAD

REIGATE RH2 8HA



INTERNAL TOTAL AREA: 443 sq. ft, 41 m2

Measurements Deemed Highly Reliable But Not Guaranteed.



ROSS MARGETTS
exp