



Alma Square, NW8

£750,000

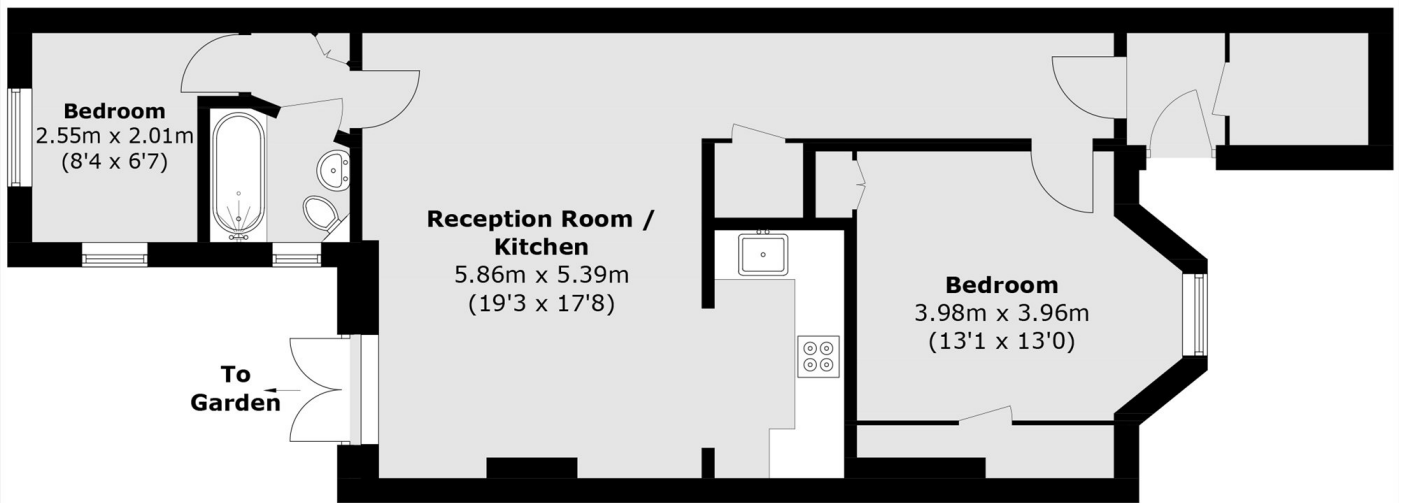
A spacious two bedroom apartment extending to just over 700 sq ft, set within an attractive period building. The property benefits from its own private entrance, a private garden, access to a communal garden, wood flooring, and is offered chain free with a share of freehold.

Situated in a desirable St John's Wood location, the property is close to the cafés, boutiques, and restaurants of St John's Wood High Street. Regent's Park and Primrose Hill are both within easy reach. Transport links include St John's Wood underground station (Jubilee line) and Swiss Cottage underground station (Jubilee line).

Features

- Two Bedrooms
- Chain Free
- Private Garden
- Share of Freehold
- Private Entrance
- Communal Garden

Alma Square, London, NW8



Total area (approx.): 65.7 sq. m (707.1 sq. ft)