



Price
£300,000

Freehold

3x  1x  1x 

**St. John's Close,
Aldingbourne,
Chichester, West
Sussex, PO20**

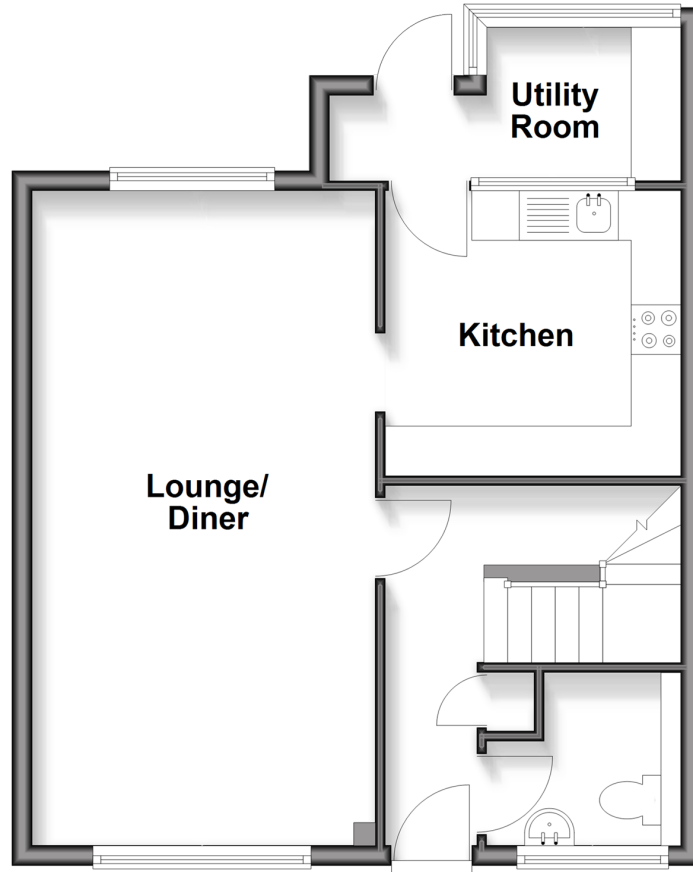
OVER 60?

Secure this property
for up to **59% less!**

cubitt & west
Helping you move forwards

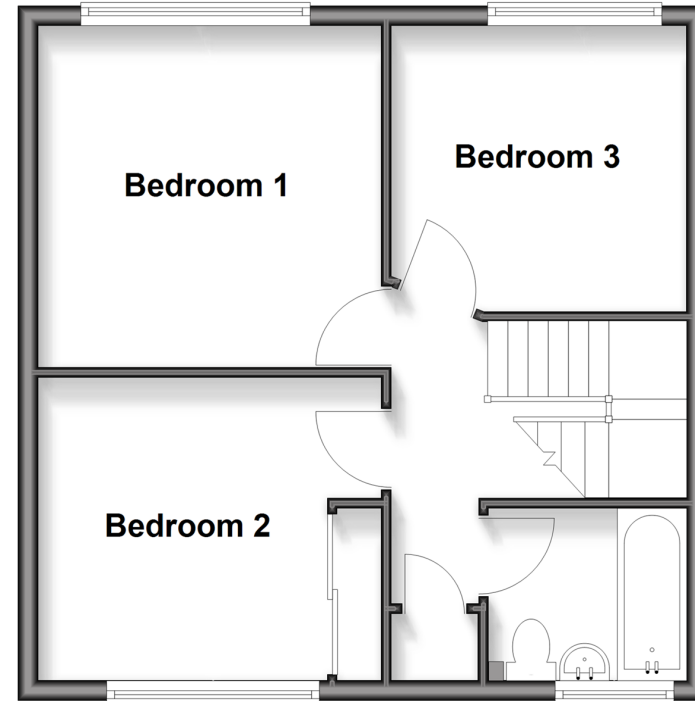
Ground Floor

Approx. 47.9 sq. metres (515.3 sq. feet)



First Floor

Approx. 43.1 sq. metres (464.3 sq. feet)



Accommodation

GROUND FLOOR

Entrance Hall

Cloak Room

Lounge: 21'7 x 11'5 (6.58m x 3.48m)

Kitchen: 9'9 x 9'5 (2.97m x 2.87m)

Utility Room: 11'8 x 5'0 (3.56m x 1.53m)

FIRST FLOOR

Bedroom 1: 11'6 x 11'4 (3.51m x 3.46m)

Bedroom 2: 11'5 x 9'11 (3.48m x 3.02m)

Bedroom 3: 9'9 x 9'6 (2.97m x 2.90m)

Bathroom



Main features

- Three bedroom semi-detached home
- Bright living room/diner
- Kitchen and separate utility
- Private rear garden
- Easy parking
- Quiet cul-de-sac in sought-after Aldingbourne, close to Chichester



Nearest Schools

Primary Schools: Aldingbourne Primary 0.2 miles, Eastergate CofE Primary 0.6 miles, Barnham Primary 1.2 miles

Secondary Schools: Ormiston Six Villages Academy 0.6



Transport Information

Train Stations: Barnham 1.3 miles, Bognor Regis 3.1 miles, Chichester 4.8 miles



Address

St. John's Close, Aldingbourne, Chichester, West Sussex, PO20



Directions

For directions to this property please contact us.



cubitt&west
Helping you move forwards

Call Chichester Branch 01243 786581 ■ cubittandwest.co.uk



■ Through a Homewise Home For Life Plan people aged 60+ can secure this property for up to 59% less, by purchasing a Lifetime Lease



40415369/20260321/LR/HS