







4 Summers Close

Knutsford

Renovated three-bed detached bungalow in a quiet Knutsford cul-de-sac. Open-plan living, new roof, stylish wet room, ensuite WC, private garden, garage, parking, walk to schools and town.

Council Tax band: E

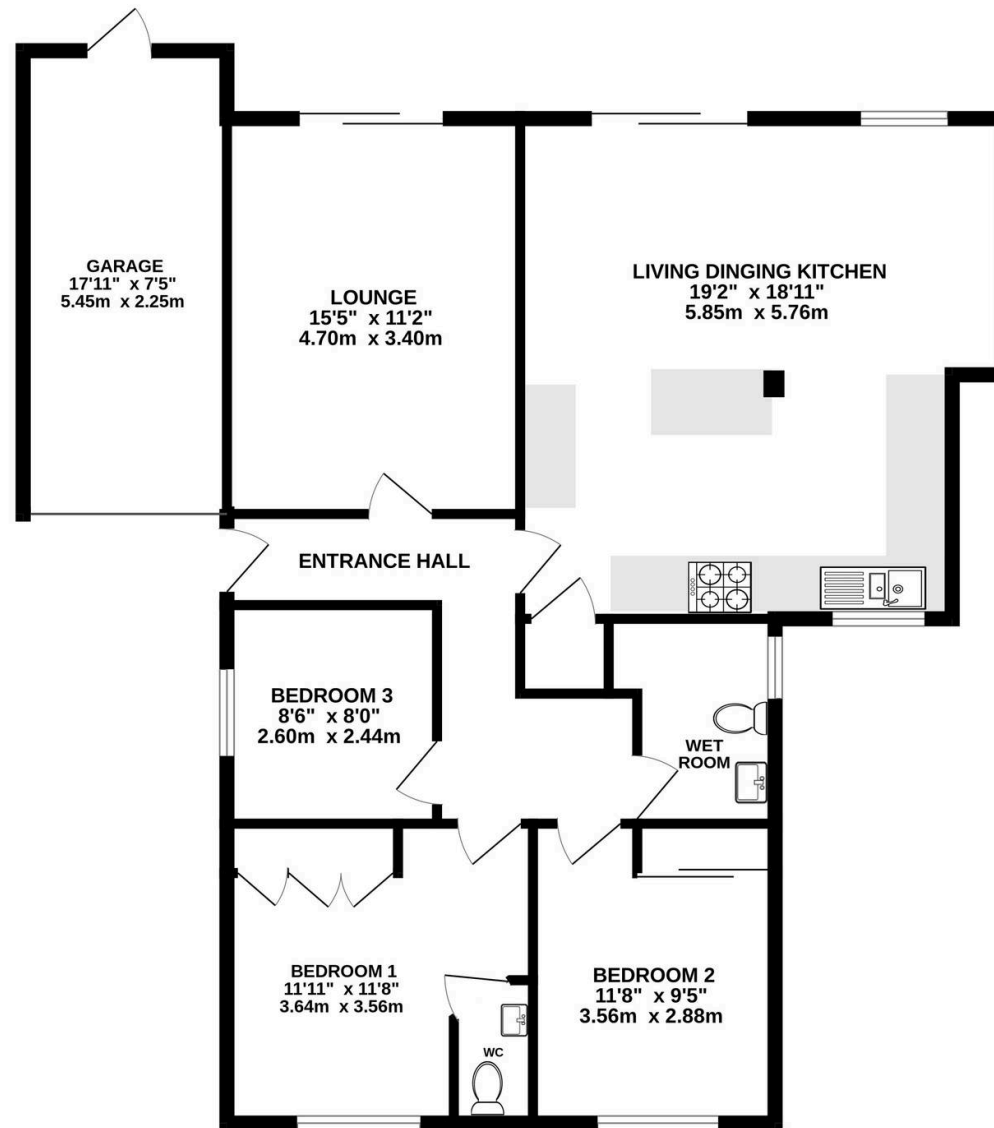
Tenure: Freehold

EPC Energy Efficiency Rating: D

- Beautifully presented, with major renovations just completed, including new roof, windows & doors and a stunning wet room
- Detached and set upon a lovely plot with great maturity and privacy, whilst not requiring too much maintenance
- Driveway for two or three vehicles and an attached garage with electric door
- Three bedrooms, one with an ensuite WC, serviced by a stunning wet room
- Large open plan living kitchen diner opening into the rear garden plus a good-sized separate lounge
- A quiet cul-de-sac position within a highly desirable development in Knutsford, close to Bexton Primary and walking distance to the town



1137 sq.ft. (105.6 sq.m.) approx.



TOTAL FLOOR AREA : 1137 sq.ft. (105.6 sq.m.) approx.

Whilst every attempt has been made to ensure the accuracy of the floorplan contained here, measurements of doors, windows, rooms and any other items are approximate and no responsibility is taken for any error, omission or mis-statement. This plan is for illustrative purposes only and should be used as such by any prospective purchaser. The services, systems and appliances shown have not been tested and no guarantee as to their operability or efficiency can be given.
Made with Metroptx ©2026





Stuart Rushton & Company

Stuart Rushton & Co, 35 King Street – WA16 6DW

01565 757000

enquiries@srushton.co.uk

www.srushton.co.uk



We are not authorised to make or give any representations or warranties in relation to the property either here or elsewhere. We assume no responsibility for any statement that may be made in these particulars, and they do not form part of any offer or contract and must not be relied upon as statements or representation of fact. Any areas, measurements or distances are approximate. The text, photographs and plans are for guidance only. Importantly, it should not be assumed that the property has all necessary planning, building regulations or other consents and we have not tested any services, equipment or facilities. Purchasers must satisfy themselves by inspection or otherwise.