

57 Cannons Gate, Clevedon, North Somerset, BS21 5HL

£950 Per Calendar Month

marktempler

RESIDENTIAL LETTINGS





PROPERTY TYPE

House



LOCATION

Lower Cleveton



BEDROOMS

1



RECEPTION ROOMS

1



BATHROOMS

1



WARMTH

Gas central heating & double glazing



PARKING

Allocated space



OUTSIDE SPACE

Front & Rear



EPC RATING

C



COUNCIL TAX BAND

A



Quality modern middle terrace house

Bright double bedroom with skylight

Holding deposit - £219.23

Security deposit - £1,096.15

EPC Rating - C

Council tax band - A

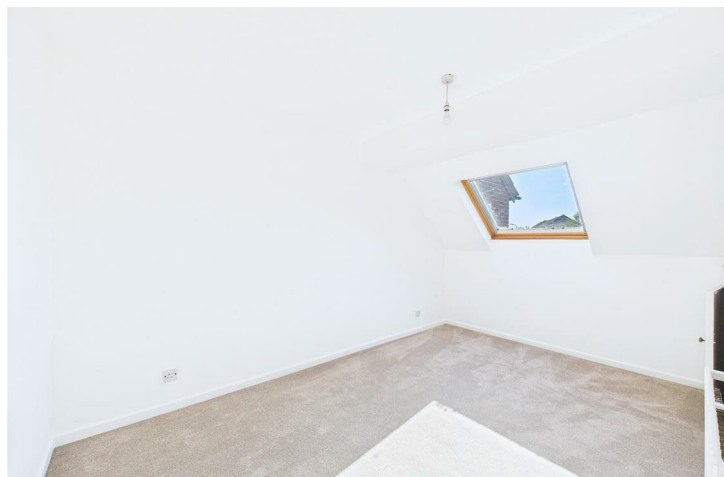
What will it cost to rent this property?

When you submit a completed application form, we will discuss the details with the Landlord. If the Landlord is happy to proceed you will be required to pay:

1. Holding deposit, equivalent to 1 week's rent. This will reserve the property.

Once references are complete, you will be asked to pay:

2. First month's rent
3. Security deposit, equivalent to 5 weeks' rent (for rents under £50,000 per year). This covers damages or defaults on the part of the tenant during the tenancy.



Utilities

Mains water and drainage, mains electric supply, gas central heating. This information has been provided by the Landlord and is correct to the best of our knowledge.

Broadband

Ultrafast broadband available with highest available download speed 1000 Mbps and highest available upload speed 1000 Mbps. This information is sourced via checker.ofcom.org.uk, we advise you make your own enquires.

Mobile phone coverage / signal

There is limited to likely coverage indoors depending on the provider and likely coverage outdoors with a range of providers. This information is sourced via checker.ofcom.org.uk, we advise you make your own enquires.

Modern finish throughout
Open plan lounge with kitchen/breakfast area
Lovely location close to countryside
Front and rear garden

Available From:

This property is available to move into from approximately 21st August 2026



For the latest properties and local news follow Mark Templer Residential Lettings on:



