

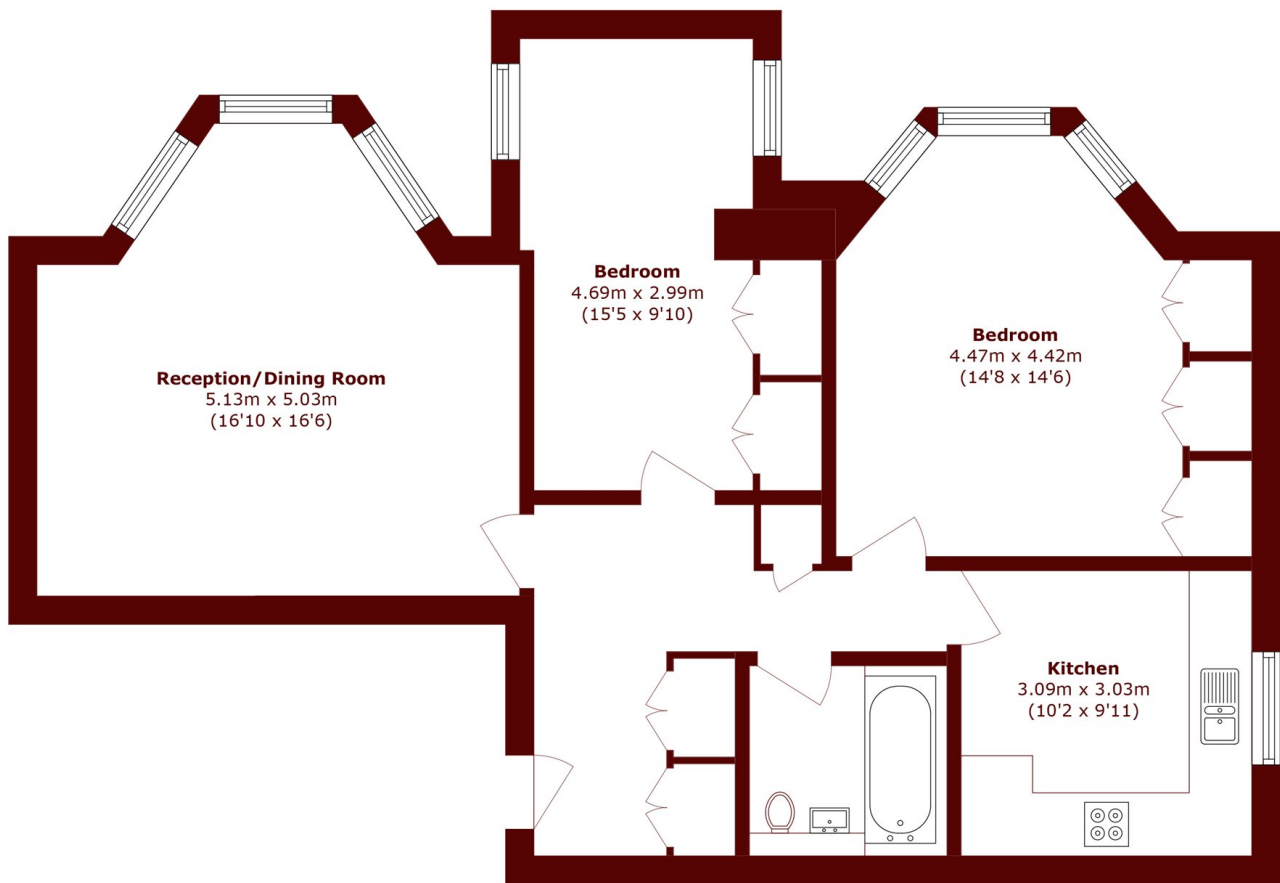


Tregunter Road, SW10

£900,000



- Two Double Bedroom
- Separate Kitchen
- Family Bathroom
- Garden Flat
- Generous Reception
- Excellent Storage



Lower Ground Floor

Total area (approx.): 79.2 sq. m (852.5 sq. ft)

Marsh & Parsons South Kensington

29 Harrington Road, London,
SW7 3HD
020 7590 0800