



Not for marketing purposes INTERNAL USE ONLY

Corondale Road  
Plymouth



## Property Description

A well-proportioned two-bedroom bungalow offering a traditional layout and excellent scope for modernisation. The property features a bright bay-fronted living room with a feature fireplace, flowing through to a separate dining room with sliding doors into a conservatory, creating a light-filled living space overlooking the garden.

The accommodation includes two bedrooms, both benefiting from built-in storage, alongside a family bathroom. A galley-style kitchen provides access to a useful utility area, as well as an additional enclosed rear porch, ideal for storage or as a garden room/boot room.

Externally, the property benefits from a private, mature rear garden and an attached garage, offering practical storage and parking. Overall, this home presents a fantastic opportunity to update and create a comfortable, modern living space in a well-established setting.

## Front Of House

The front entrance is centrally positioned and accessed by a narrow-tiled walkway in a reddish/orange tone. The house is set behind a low white wall with stone pillars framing the entrance gate area.

The front garden is densely planted with shrubs and small trees. Attached garage on the left of the house. To the right of the garage door is a narrow, tall wooden gate, a side entrance/access.

## Hallway

Round (porthole-style) window set into the wall.

The glass has a decorative, textured pattern with diamond-shaped leadwork, White radiator. Sliding glass doors from porch.

## Lounge

12' 2" x 12' ( 3.71m x 3.66m )

Bay window consists of multiple panels with white-painted frames.

The upper portions of the window feature diamond-pattern leaded glass, consistent with the rest of the house's style. A radiator is positioned directly beneath the window. The fireplace is a central focal point on the left wall.

It features,

a white decorative surround with subtle detailing

, a marble or stone inset with pale veining

, a gas fire insert with a metal grate and faux coals. White-painted wood with vertical glazed panelled sliding doors leading to dining room.

## Dining Room

12' 2" x 12' ( 3.71m x 3.66m )

A major focal point in this room is the large, sculptural fireplace, built in a tapered chimney-breast shape

, finished with multicoloured stacked stone (grey, brown, reddish tones)

Includes, a gas fire insert  
, a stone hearth with irregular tiling  
integrated low-level ledges/shelving extending  
to the side. Modern-style sliding glass patio  
doors leading to conservatory. Glazed internal  
door leading to kitchen.

## Kitchen

8' 9" x 7' 10" ( 2.67m x 2.39m )

A range of matching wall and base units with  
worktops above. The kitchen is narrow and  
linear, with units on both sides (a classic  
galley layout). At the end of the kitchen is a  
white uPVC door with, frosted/textured glass  
panels (top section)

a solid lower panel, leading to porch area.  
Cooker point. Plumbing for washing machine.  
Double glazing window to the rear elevation.  
White sink and drainer with dual mixer tap.  
Walls are lined with small square tiles in a  
light grey pattern.

## Porch

white-framed conservatory with large glass  
windows a translucent, ribbed roof panel  
system (likely polycarbonate)

## Conservatory

12' 4" x 10' ( 3.76m x 3.05m )

Fully enclosed rear porch/conservatory with  
white uPVC framing throughout

, a pitched, translucent roof made of ribbed  
panels, extensive full-height glazing on  
multiple sides. White uPVC external door

Features a large clear glass panel  
Includes a brass/gold-tone handle

This door provides direct access to the  
garden.

## Bedroom 1

13' x 11' 11" ( 3.96m x 3.63m )

Bay window consists of multiple, white-framed  
window panels,  
diamond-pattern leaded glass in the upper  
sections,

clear lower panes offering views of Garden  
greenery. White radiator. Full-height, built-in  
wardrobes. Mirrored wardrobe doors, a  
central dressing area. Overhead storage  
cupboards, running along the full width above  
the wardrobes.

## Bedroom 2

12' x 9' ( 3.66m x 2.74m )

Built-in wardrobes.

These wardrobes are distinctive:

Made from dark reddish wood

Finished in a louvered/slatted design (vented  
panels). Double glazing window to the rear  
elevation. White radiator.

## Bathroom

7' 8" x 4' 8" ( 2.34m x 1.42m )

A full-size white bathtub sits against the back  
wall.

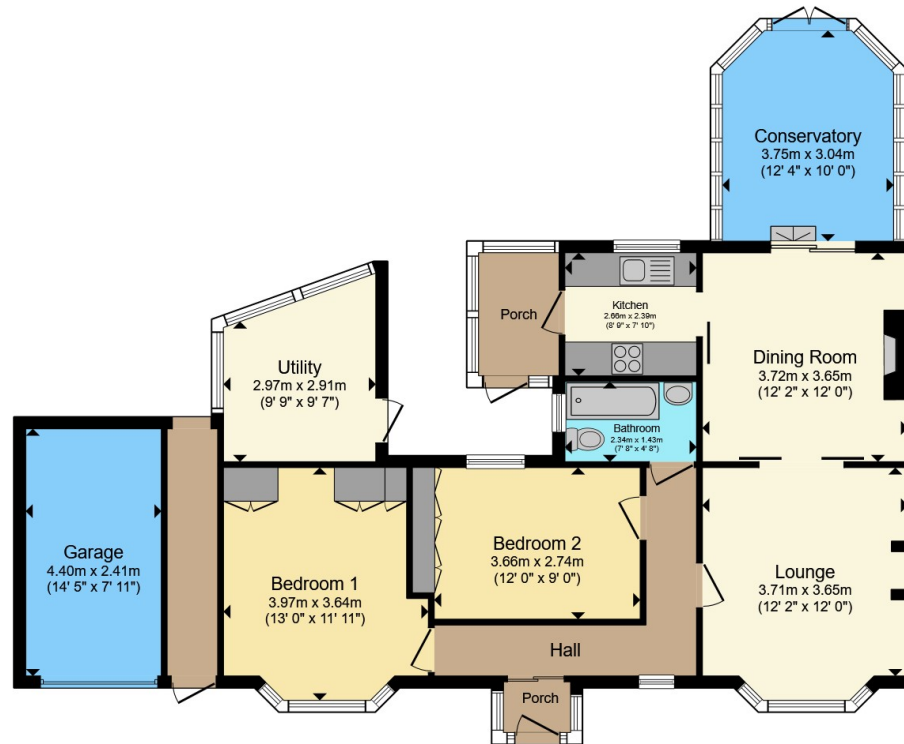
Above it is an electric shower unit mounted on  
the wall, white casing with visible  
temperature/power markings

a flexible hose leading to a handheld shower  
head. Standard white toilet bowl and cistern.  
On the right is a white pedestal sink with,  
separate hot and cold taps. Walls around the  
bath are fully tiled in pink patterned tiles with  
a marbled effect.









Total floor area 109.5 m<sup>2</sup> (1,179 sq.ft.) approx

This floor plan is for illustrative purposes only. It is not drawn to scale. Any measurements, floor areas (including any total floor area), openings and orientation are approximate. No details are guaranteed, they cannot be relied upon for any purpose and they do not form part of any agreement. No liability is taken for any error, omission or misstatement. A party must rely upon its own inspection(s). Powered by www.propertybox.io



To view this property please contact Connells on

**T 01752 351616**  
**E stbudeau@connells.co.uk**

15 Victoria Road St Budeaux  
 PLYMOUTH PL5 1RW

EPC Rating: Council Tax  
 Awaited Band: C

Tenure: Freehold

**check out more properties at connells.co.uk**



1. MONEY LAUNDERING REGULATIONS Intending purchasers will be asked to produce identification documentation at a later stage and we would ask for your co-operation in order that there will be no delay in agreeing the sale. 2. These particulars do not constitute part or all of an offer or contract. 3. The measurements indicated are supplied for guidance only and as such must be considered incorrect. Potential buyers are advised to recheck measurements before committing to any expense. 4. We have not tested any apparatus, equipment, fixtures, fittings or services and it is in the buyers interest to check the working condition of any appliances.

Connells Residential is registered in England and Wales under company number 1489613, Registered Office is Cumbria House, 16-20 Hockliffe Street, Leighton Buzzard, Bedfordshire, LU7 1GN. VAT Registration Number is 500 2481 05.

**See all our properties at [www.connells.co.uk](http://www.connells.co.uk) | [www.rightmove.co.uk](http://www.rightmove.co.uk) | [www.zoopla.co.uk](http://www.zoopla.co.uk)**

Property Ref: SBU109950 - 0003