



Lakeside Drive, NW10

£3,000 Per calendar month

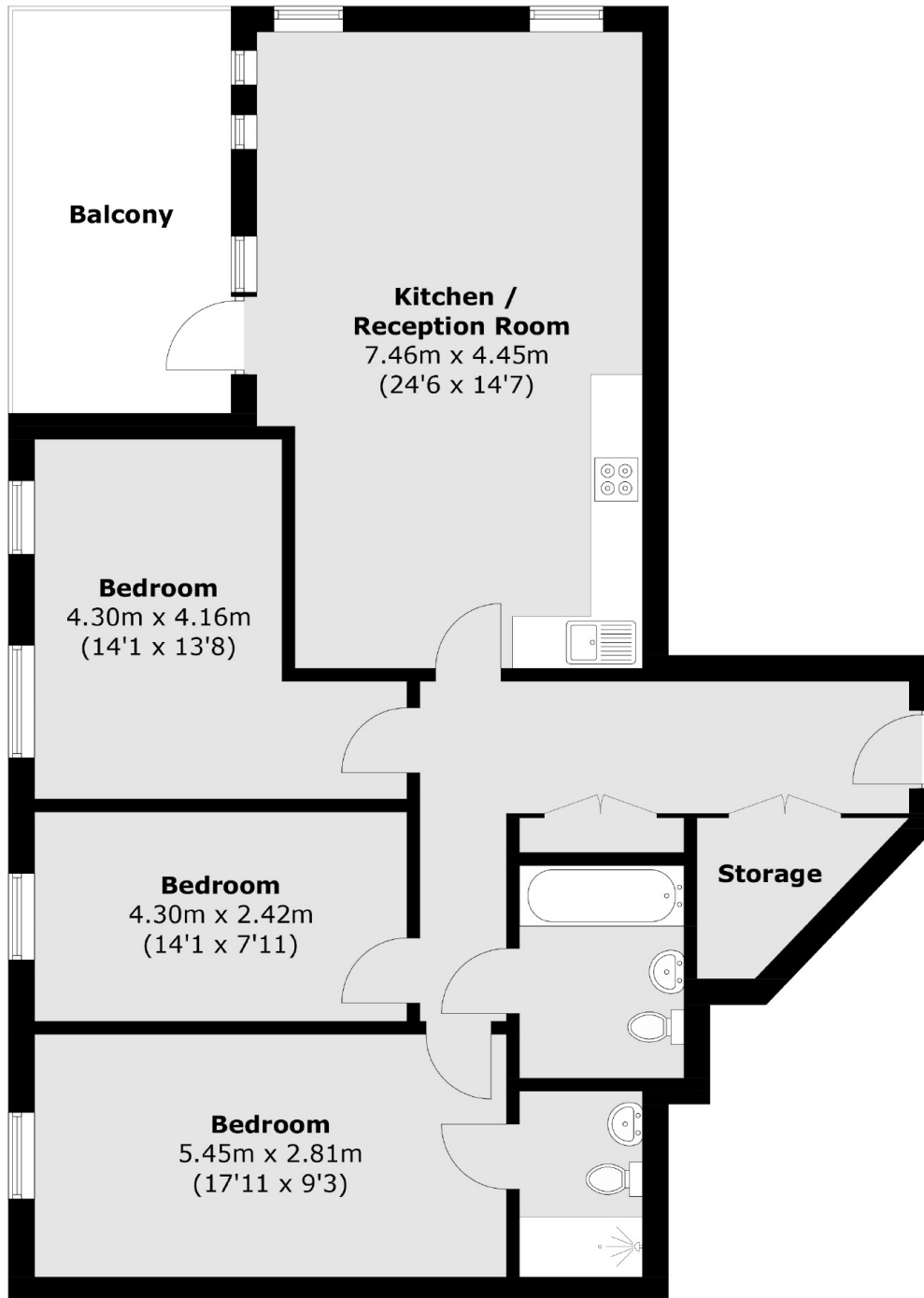
This immaculately presented penthouse apartment is finished to a high standard and benefits from three double bedrooms, a bright a spacious open plan kitchen reception with direct access to a balcony overlooking the London Skyline from the 26th Floor.

Located under a ten minute walk to Park Royal station (Piccadilly line) and within similar proximity to Hanger Lane station (Central line). The property is within a ten minute walk to local amenities of supermarkets and eateries (Royal Leisure Park).

Features

- Penthouse Apartment
- Communal Gardens
- Open Plan Kitchen
- Three Double Bedrooms
- Private Balcony
- Lift Access

Lakeside Drive,
London, NW10



Total area (approx.): 98.7 sq. m (1,062.4 sq. ft)
Balcony: 11.7 sq. m (125.9 sq. ft)