

The Overview

Property Name:

Coronation Street, Barry

Price:

£950 Per Calendar Month

Qualifier:

Per Calendar Month



The Bullet Points

- Two Bedroom Property
- Open Plan Living/Dining Room
- Ample Storage Space
- Separate Bath & Shower
- Tiered Rear Garden
- Available 1st June
- Spacious Kitchen
- Family Bathroom
- Loft Storage Room
- Brick Built Shed



The Main Text

Located on Coronation Street, Barry, CF63 4JW, this well-presented two-bedroom property will be available from the 1st of June and offers generous living accommodation throughout. Enter the property into the spacious open-plan living and dining room, creating a welcoming space ideal for both relaxing and entertaining. The layout provides plenty of room for lounge furniture as well as a family dining table, making it perfect for modern living.

To the rear of the property is the fitted kitchen, complete with white cupboards and contrasting black worktops. The kitchen offers ample cupboard and worktop space, making it both practical and functional for everyday use.

Upstairs, the property benefits from two spacious bedrooms along with a great-sized family bathroom featuring both a separate bath and shower, offering added convenience for families or professionals alike. There is also an easily accessible loft room via stairs, providing excellent additional storage space.

Externally, the rear garden is arranged over tiers, starting with a patio seating area, stepping up to a lawned section, and then onto a further patio area at the rear. The garden also benefits from a brick-built shed, ideal for storage. This property offers a fantastic combination of indoor and outdoor space in a convenient Barry location.

Additional Information

Household Income to be considered for referencing: £28,500+

0% Deposit Option Available

Please note: Applicants must have no active CCJs or IVAs to meet referencing criteria. Unfortunately, applications that do not meet these standards may result in an unsuccessful reference check and forfeiture of the holding deposit.

Type of home: Mid Terraced

EPC Rating: D

Council tax band: C

Borough: BIVale Of Glamorgan

Local Area

Coronation Street is situated within a popular residential area of Barry, offering a range of nearby amenities including local shops, supermarkets, cafés, takeaways, and leisure facilities. The area benefits from a strong community feel and is conveniently located close to parks, green spaces, and the popular Barry waterfront, making it an ideal location for families, couples, and professionals alike.

Education

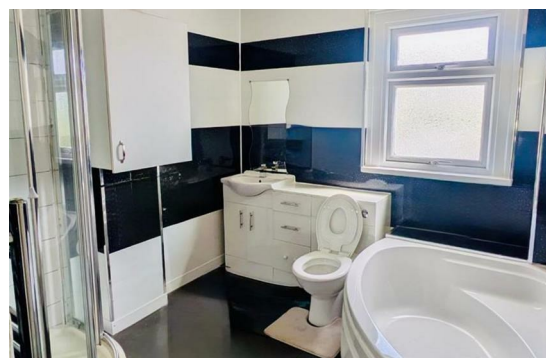
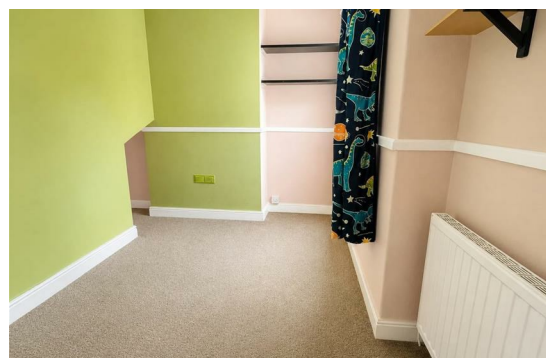
The area offers a good selection of educational facilities catering to a variety of age groups, making it a popular choice for families. There are both primary and secondary education options nearby, along with opportunities for further education within the wider Barry area. The location is well-suited for those looking to be within easy reach of everyday family amenities and educational services.

Local Transport

The property benefits from convenient transport links within Barry and to surrounding areas. Regular bus services operate nearby, while local train stations provide connections to Cardiff and beyond, making the area ideal for commuters. The location also offers easy access to main road links, providing straightforward travel throughout the Vale of Glamorgan and neighbouring towns.

The Photographs

We have allowed space for up to 48 photographs across the next four pages. If fewer images are required, not all spaces will be used.



The Photographs

We have allowed space for up to 48 photographs across the next four pages. If fewer images are required, not all spaces will be used.

The Photographs

We have allowed space for up to 48 photographs across the next four pages. If fewer images are required, not all spaces will be used.

The Photographs

We have allowed space for up to 48 photographs across the next four pages. If fewer images are required, not all spaces will be used.

