



NOTTINGHAM STREET, W1U

£650,000

One double bedroom
Share of freehold
Prime location
Ample storage
Upper floor
Natural light

@marshandparsons
marshandparsons.co.uk

MARSH &
PARSONS

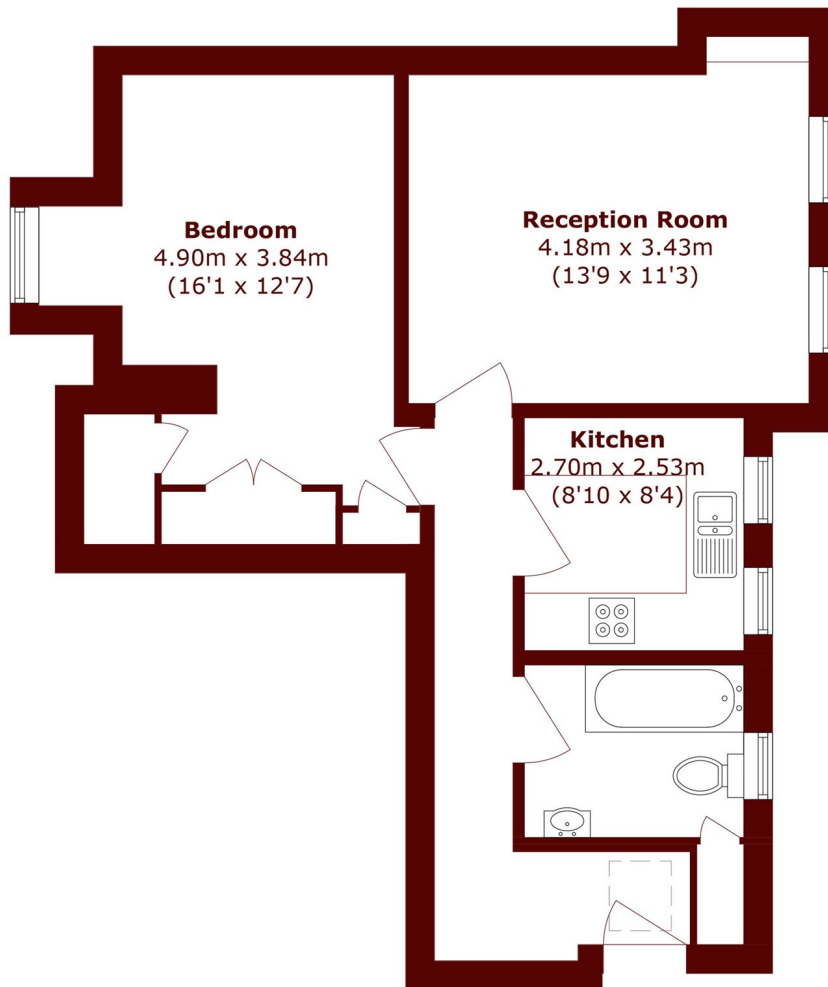


ABOUT THE PROPERTY

A delightful top-floor, one-bedroom flat close to all the shops, restaurants and boutiques offered from Marylebone High Street. Situated in a lovely red brick Mansion Block, this property is tastefully decorated throughout with neutral tones. The property is extremely well laid out with a separate kitchen, large reception room flooded with natural light from the two sash windows. The double bedroom is a great size with ample built-in storage. Additionally there is a good size fitted bathroom. The communal areas are in brilliant decorative order. The property is offered as a share of freehold with over 950 years on the lease.



STEP INSIDE NOTTINGHAM STREET



Fourth Floor

Total area (approx.): 50.0 sq. m (538.2 sq. ft)

Marylebone & Mayfair
020 7935 1775

Energy Rating: F We aim to make our particulars both accurate and reliable. However, they are not guaranteed; nor do they form part of an offer or contract. If you require clarification on any points then please contact us, especially if you're traveling some distance to view. Please note that appliances and heating systems have not been tested and therefore no warranties can be given as to their good working order

MARSH &
PARSONS