



Alex & Matteo
ESTATE AGENTS



Alex & Matteo
ESTATE AGENTS



Alex & Matteo
ESTATE AGENTS



Alex & Matteo
ESTATE AGENTS

Whites Grounds Estate, London, SE1 3JX

THIS PROPERTY IS VIRTUALLY STAGED

A well-kept two bedroom apartment; located within walking distance of both Bermondsey and London Bridge Underground Stations offering transport across London.

The property features a generous reception room with space to dine, a separate modern kitchen, two double bedrooms, and a stylish family bathroom. Additional storage can be found in the reception room.

The apartment is surrounded by a plethora of local amenities such as Maltby Street market, local restaurants, cafes, museums, and the popular Borough Market.

- Well-kept Two Bedroom Apartment
- Excellent Transport Links
- UnFurnished
- Surrounded by Local Amenities
- Modern Kitchen
- Great Location

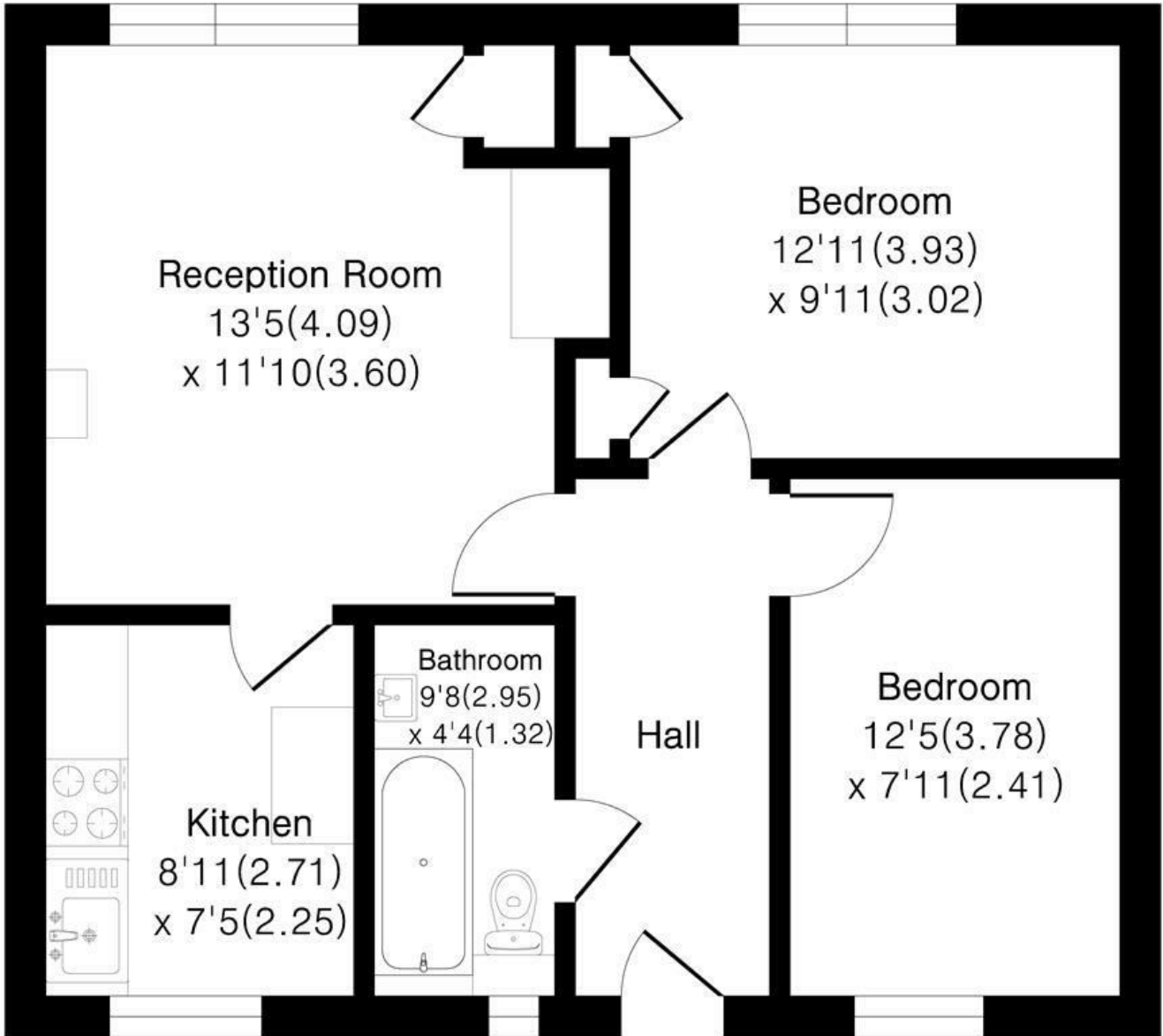
Alex & Matteo
ESTATE AGENTS

£2,300 Per month

White Grounds Estate SE1

Approximate Area = 587 sq ft / 54.5 sq m

For identification only - Not To Scale



Alex & Matteo
ESTATE AGENTS

Floor plan Produced in accordance with RICS Property Measurement 2nd Edition.
Incorporating International Property Measurement Standards (IPMS2 Residential).
Produced for Alex & Matteo Estate Agents.



Energy Efficiency Rating		Current	Potential
Very energy efficient - lower running costs			
(92 plus) A			
(81-91) B			
(69-80) C			
(55-68) D		67	76
(39-54) E			
(21-38) F			
(1-20) G			
Not energy efficient - higher running costs			
England & Wales		EU Directive 2002/91/EC	