



MAPLEWOOD
PROPERTY & INVESTMENTS LTD.

Exceptional three bedroom home in Hamstead Gardens Suburbs with period features, an abundance of natural light, and a private garden.

ASMUNS PLACE, NW11

£3,000/month

This well-maintained three bedroom home is available furnished or unfurnished and offers excellent living accommodation in a very popular neighbourhood.

Approached via a front garden gate, this charming Grade II listed property combines character features with comfortable, modern living. The ground floor comprises a welcoming reception room, a separate dining room, a well-equipped kitchen, and a guest cloakroom.

On the first floor, there are three well-proportioned bedrooms providing plenty of natural light, storage, and flexible space for working from home or family living. The principal bedroom benefits from built-in wardrobes, and the family bathroom is fitted with a contemporary suite, including a shower over the bath.

Parking is available directly outside via residents' permit, and the property is ideally located within walking distance of the high street and Hampstead Heath. Golders Green Station (Northern Line) is easily accessible, along with convenient road links to the M1.

Viewings Highly Recommended.

Available Furnished or Unfurnished
Preference For a Long Term Tenant
Short Term Rental Option (£4,500/month)





ASMUNS PLACE, NW11



Asmunds Place, NW11

- Gorgeous Grade II Listed Home
- Quiet Street and Private Garden
- Charming and Well Maintained
- Reception, Dining and Separate Kitchen
- Plenty of Natural Light Throughout
- Downstairs Guest Cloakroom
- Spacious Bedrooms with Storage
- Available Furnished or Unfurnished
- Viewings Highly Recommended

Energy Efficiency Rating

Score	Energy rating	Current	Potential
92+	A		
81-91	B		
69-80	C		80 C
55-68	D		
39-54	E	49 E	
21-38	F		
1-20	G		



3



1



2

796 sq ft | Council Tax Band: F | EPC: E

© Maplewood Property & Investments Ltd 2025. Maplewood Property & Investments Ltd is a registered limited company in England & Wales. Company registration no. 10082285. Registered address 85, First Floor Great Portland Street, London, England W1W 7LT. These details are for guidance only and complete accuracy cannot be guaranteed. They do not constitute a contract or part of a contract. All measurements are approximate. No guarantee can be given with regards to planning permissions or fitness for purpose. No equipment, fixture or fitting has been tested. Items shown in photographs are not necessarily included.

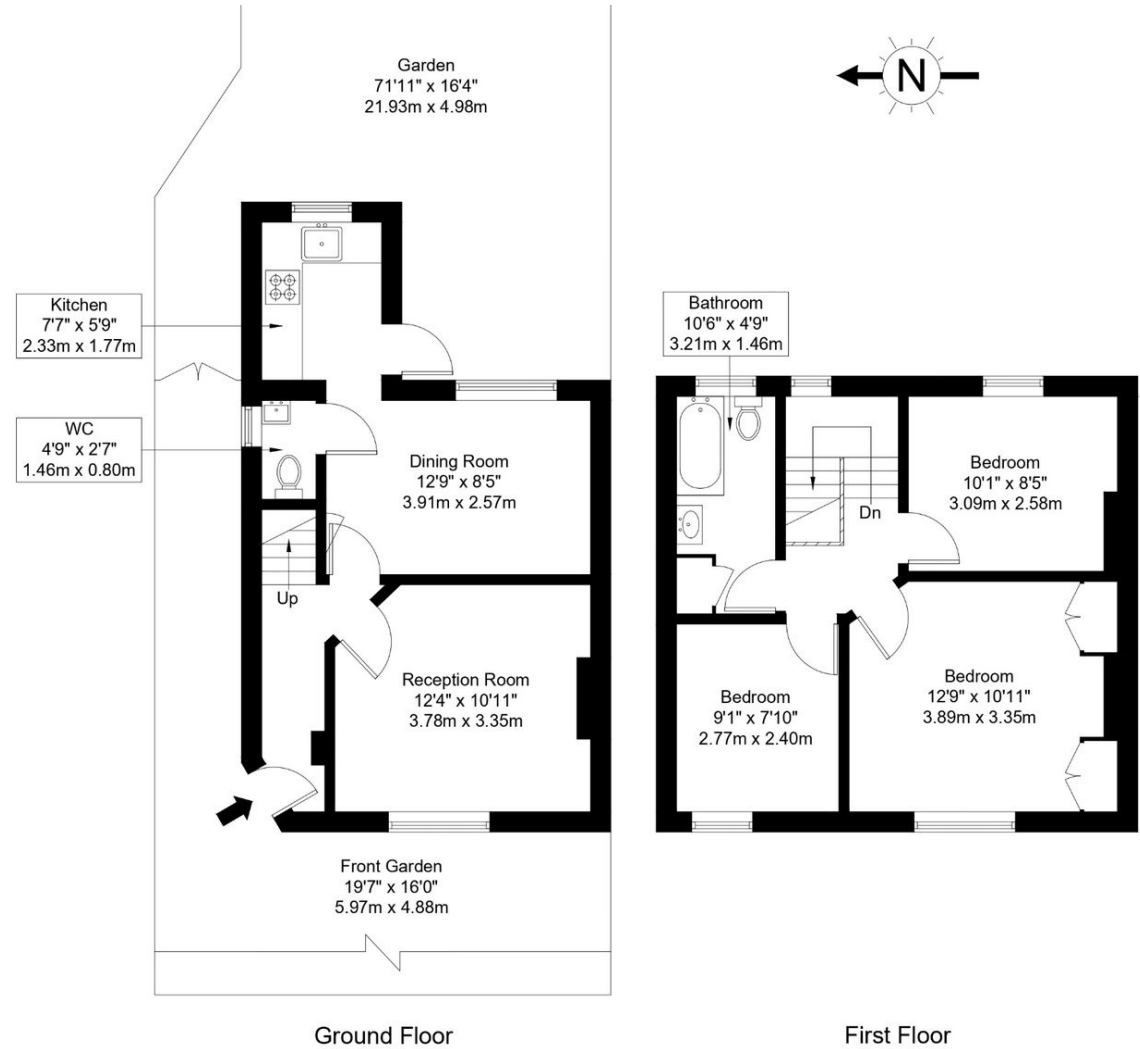
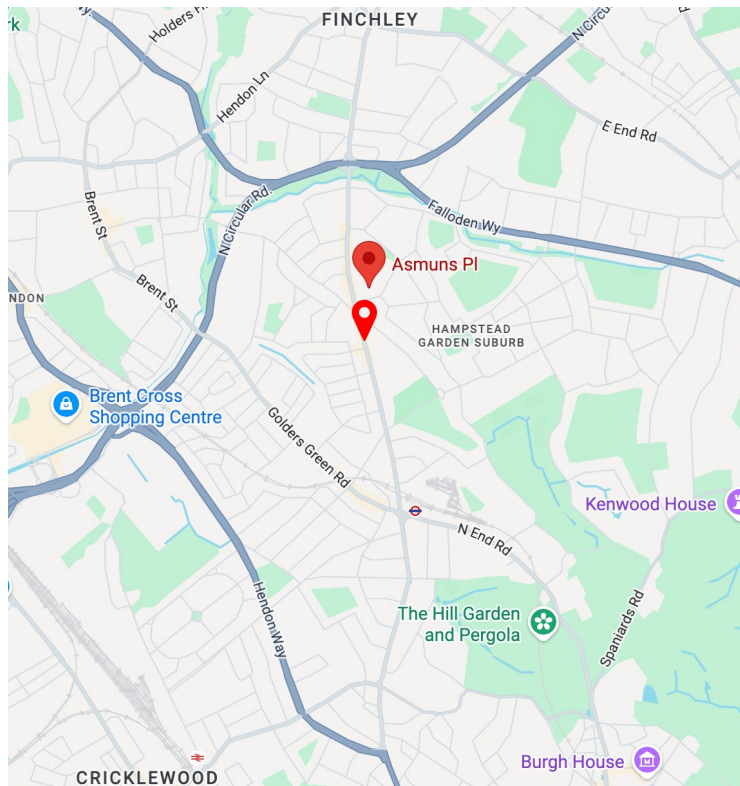


MAPLEWOOD
PROPERTY & INVESTMENTS LTD.

0203 488 0224

hello@maplewoodproperty.co.uk

www.maplewoodproperty.co.uk



The Floor plan is not to scale and measurements and areas shown are approximate and therefore should be used for illustrative purposes only. The plan has been prepared in accordance with the RICS code of Measuring Practice and whilst we have confidence in the information produced it must not be relied on. Maximum lengths and widths are represented on the floor plan. If there is any aspect of particular importance, you should carry out or commission your own inspection of the property.

Copyright @ BleuPlan

