



Queens Avenue, Maidstone, , ME16 0EP

Price £295,000



**** AN EXCEPTIONALLY WELL-PRESENTED TWO BEDROOM GROUND FLOOR MAISONETTE WITH GARAGE AND PARKING, SITUATED IN THE MOST SOUGHT AFTER QUEENS AVENUE AREA OF MAIDSTONE ****

Page & Wells are delighted to bring to the market this stunning two bedroom ground floor maisonette, which must be viewed to be appreciated. The accommodation features two double bedrooms, a spacious living room, modern kitchen and a light and airy bathroom. There are delightful communal gardens, garage and parking facilities to the front of the garage. An internal viewing is highly recommended. Contact PAGE & WELLS King Street Office on 01622 756703. Tenure: Share of Freehold. EPC Rating: C. Council Tax Band: C.



KEY FEATURES

- Beautifully presented
- Two double bedrooms
- Modern kitchen
- Garage and parking
- Exceptionally well-maintained communal gardens
- Share of Freehold

ACCOMMODATION

Entrance Hall

Spacious Living Room

Modern Kitchen

Bedroom

Bedroom

Bathroom

EXTERNALLY

There are exceptionally well-maintained communal gardens, garage and parking.

VIEWING

Viewing strictly by arrangements with the Agent's Head Office: 52-54 King Street, Maidstone, Kent ME14 1DB. Tel: 01622 756703.

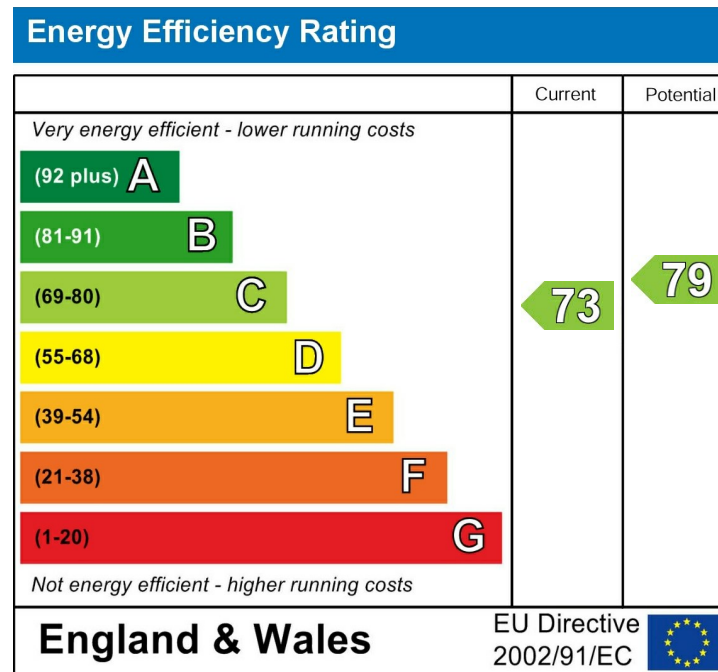
LEASE DETAILS

To be confirmed by vendor.

AGENT'S NOTE

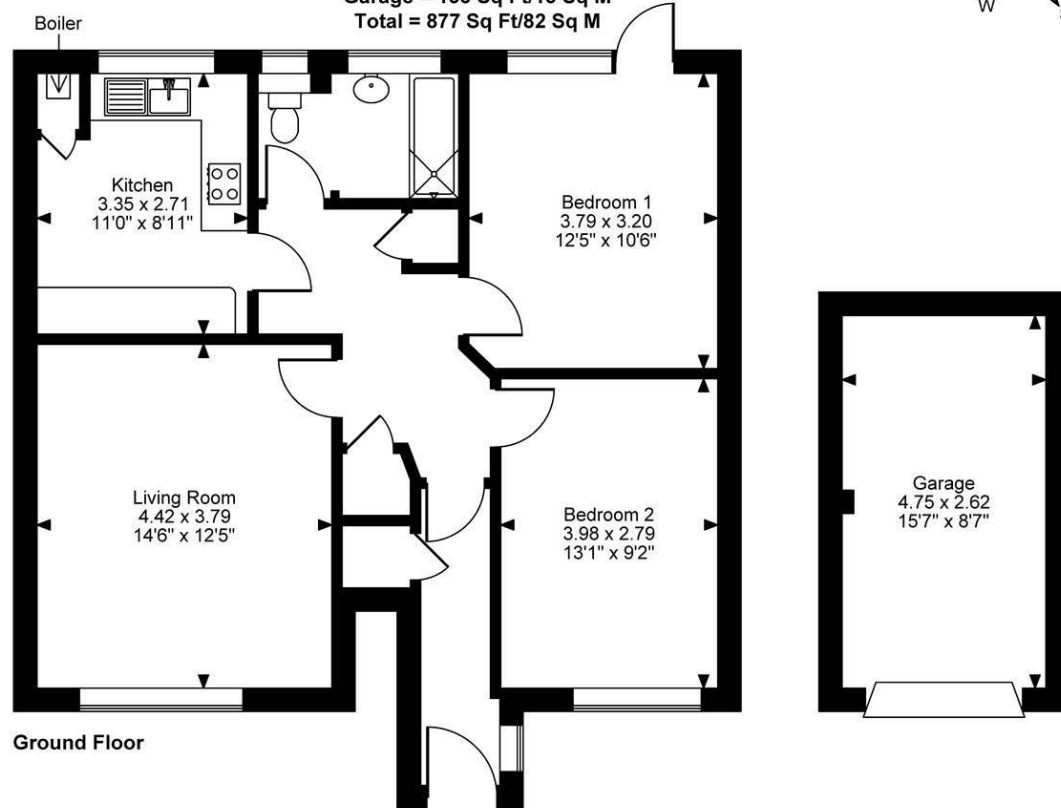
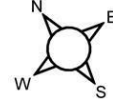
We understand that the property is not suitable for a buy-to-let purchase as it is a condition of the lease that all properties on this development cannot be rented out.

VIEWING



Page & Wells limited for themselves and for the vendors of this property whose agents they are give notice that: 1. These particulars do not constitute any part of, an offer or a contract. 2. All statements contained in these particulars as to this property are made without responsibility on the part of Page & Wells Limited or the Vendor. 3. None of the statements contained in these particulars as to the property is to be relied on as statements or representations of fact. 4. Any intending purchaser must satisfy himself by inspection or otherwise as to the correctness of each of the statements contained in these particulars. 5. The vendor does not make or give, and neither Page & Wells Limited nor any person in their employment has any authority to make or give any representation whatsoever in relation to this property. These particulars are supplied on the understanding that all negotiations are carried out throughout Page & Wells Limited. Properties with a reference prefixes EAA are those which Page & Wells Limited disclose an interest in accordance with the provisions of the Estates Agents Act 1979

Chelsfield House, Queens Avenue, Maidstone
Approximate Gross Internal Area
Main House = 742 Sq Ft/69 Sq M
Garage = 135 Sq Ft/13 Sq M
Total = 877 Sq Ft/82 Sq M



FOR ILLUSTRATIVE PURPOSES ONLY - NOT TO SCALE

The position & size of doors, windows, appliances and other features are approximate only.

© ehouse. Unauthorised reproduction prohibited. Drawing ref. dig/8686987/SAP

