

Payton
Jewell
Caines



11 Penhydd Street, Pontrhydyfen – SA12 9SB
Port Talbot

£185,000



11 Penhydd Street

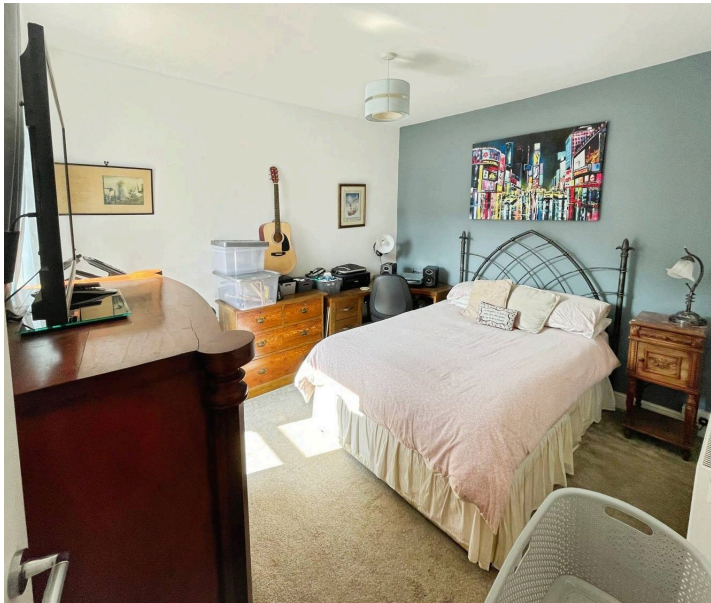
Pontrhydyfen, Port Talbot

Traditional three bedroom mid terrace house located in the attractive village of Pontrhydyfen comprising entrance hall, open plan lounge/diner, kitchen, utility room, three bedrooms, upstairs family bathroom and rear garden. Viewing is highly recommended. Ideal first time purchase.





- Traditional three bedroom mid terraced house
- Lounge / Diner
- Kitchen
- Utility Room
- Upstairs family bathroom
- Enclosed rear garden



Entrance

Via opaque double glazed timber door into the entrance hall finished with emulsioned walls and laminate flooring. Stairs leading to the first floor and opening into the lounge/diner.

Lounge / Diner

16' 0" x 20' 11" (4.88m x 6.38m)

Coved ceiling, emulsioned walls, PVCu double glazed window overlooking the front of the property, PVCu double glazed window overlooking the rear of the property, two radiators and laminate flooring. Feature fireplace, built in book shelves and under stair storage cupboard.

Kitchen

10' 3" x 11' 6" (3.12m x 3.51m)

Double glazed patio doors leading to the rear garden, emulsioned walls with tiling to splash back areas and vinyl flooring. A range of wall and base units with complementary work surfaces. Integrated five ring gas hob and electric double oven. Belfast sink with mixer tap. Central island with storage and shelving. Door leading to utility room.

Utility Room

7' 11" x 10' 4" (2.42m x 3.15m)

Down lights, wall mounted electric radiator, PVCu double glazed window overlooking the rear, PVCu opaque double glazed door leading to the side of the property. Plumbing for automatic washing machine.

First floor landing

Via stairs. Access to loft, radiator, built in storage cupboard, shelving, emulsioned walls and fitted carpet.

Bedroom 1

9' 6" x 12' 6" (2.89m x 3.80m)

Coved ceiling, emulsioned walls with feature papered wall, two PVCu double glazed windows overlooking the front of the property with attractive views over Pontrhydyfen and fitted carpet. Door to walk in wardrobe with fitted shelving and hanging rails.

Bedroom 2

10' 5" x 11' 9" (3.18m x 3.59m)

PVCu double glazed window overlooking the rear of the property, radiator, emulsioned walls and fitted carpet.

Bedroom 3

1.65m x 3.29m (5' 5" x 10' 10") plus recess. PVCu double glazed window overlooking the rear of the property, emulsioned walls, radiator and vinyl flooring.

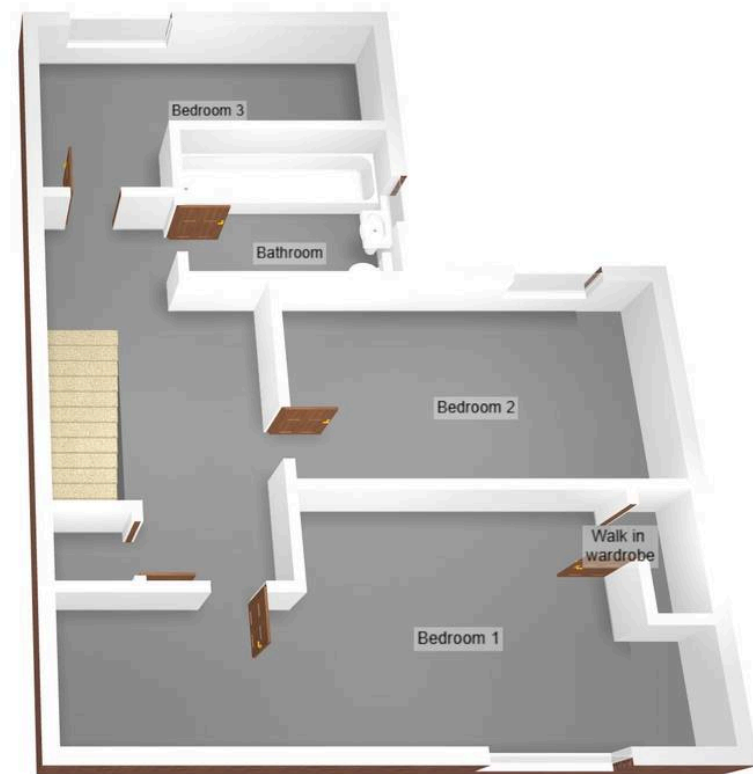
Bathroom

Painted ceramic tiled walls, PVCu opaque double glazed window overlooking the side of the property, chrome heated towel rail and vinyl flooring. Three piece suite comprising low level WC, pedestal wash hand basin and panelled bath with mixer tap and overhead shower. Airing cupboard.

Outside

Enclosed rear garden laid to concrete with timber framed garden shed. Rear gated access.





Payton Jewell Caines

Payton Jewell Caines, 53 Station Road – SA13 1NW

01639891268 • porttalbot@pjchomes.co.uk • pjchomes.co.uk/

These property details are provided as a general guide only. Whilst we aim for accuracy, measurements, photographs, floor plans, and descriptions should not be relied upon as statements of fact. Buyers should carry out their own checks regarding the property, services, and specifications. Fixtures and fittings are only included if specifically stated. Appliances and services have not been tested.